

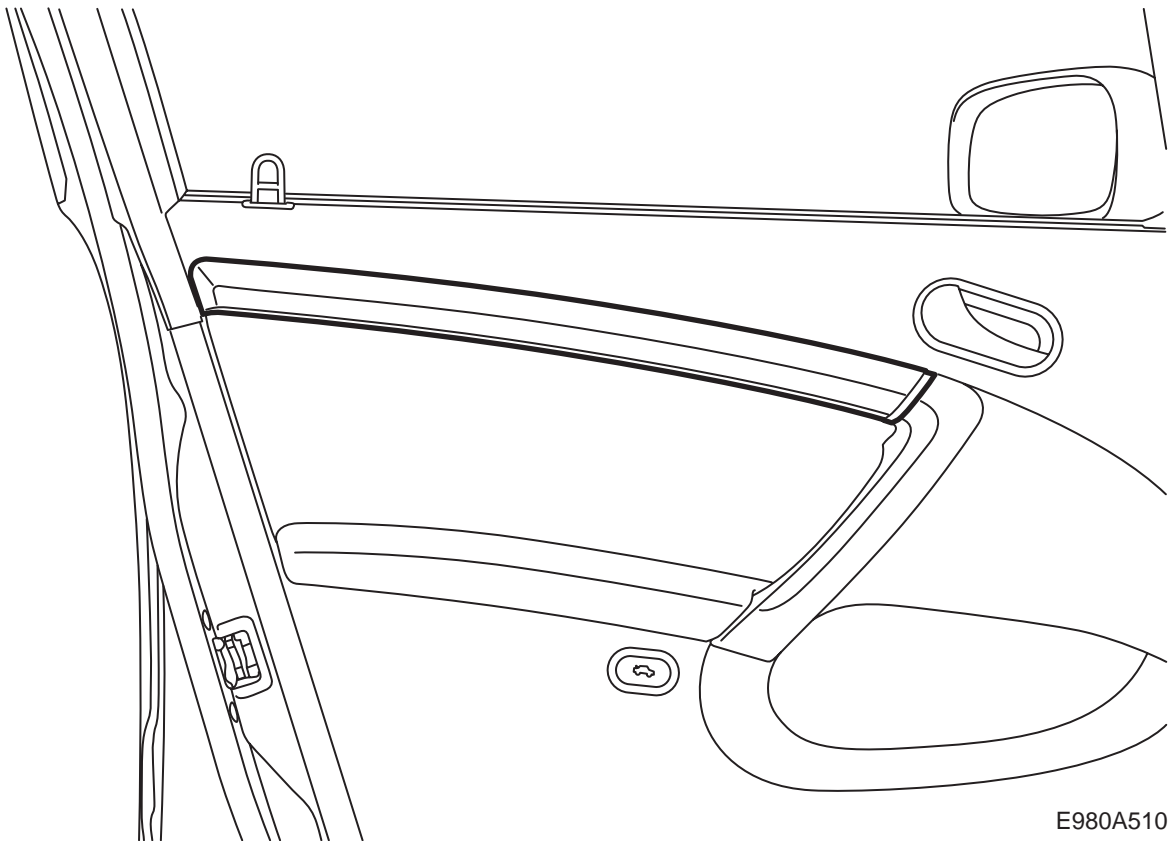


**MONTERINGSANVISNING · INSTALLATION INSTRUCTIONS
MONTAGEANLEITUNG · INSTRUCTIONS DE MONTAGE**

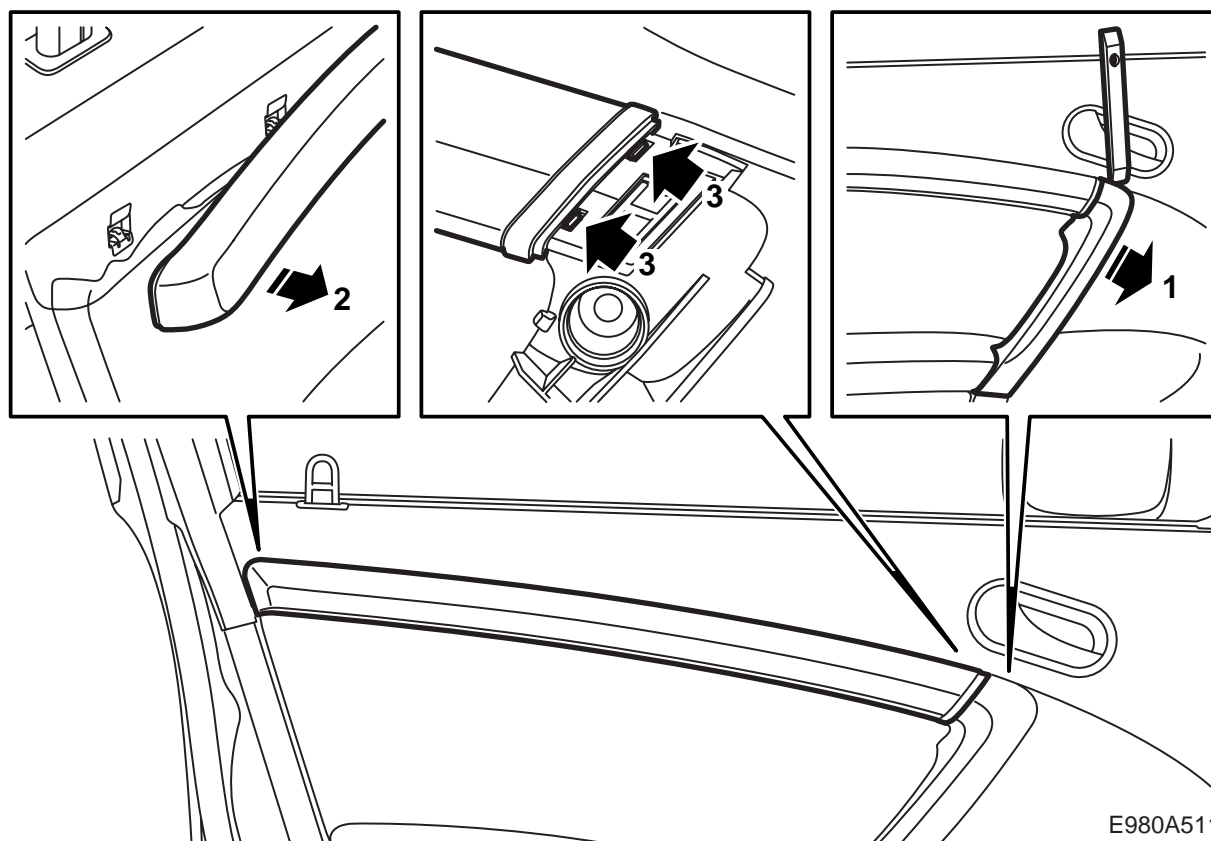
Saab 9-5 M06-

Decor strip, door trim

Accessories Part No.	Group	Date	Instruction Part No.	Replaces
32 000 589	9:85-30	May 05	32 025 673	



E980A510

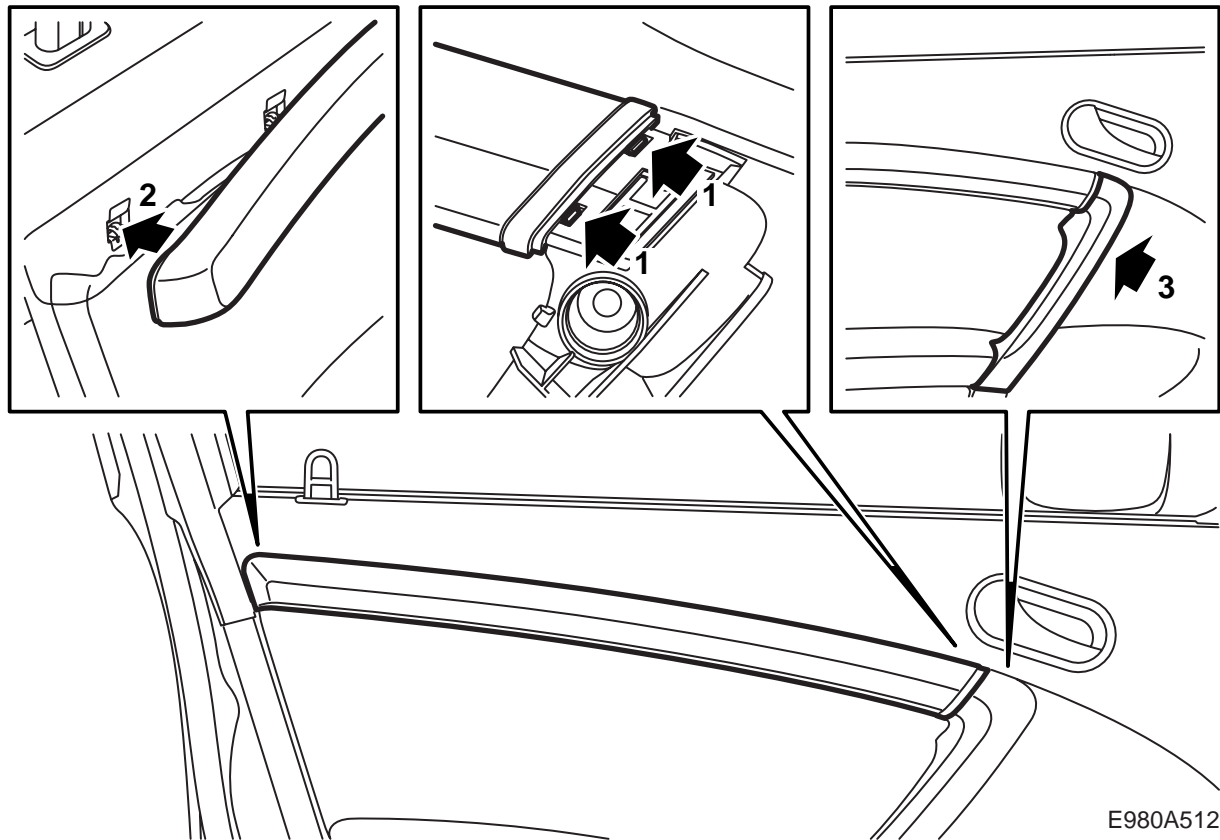


E980A511

To remove

Important

- 1 Use removal tool 82 93 474, to avoid damage to the interior equipment.
- 2 Exercise care when the strip is detached so that the plastic studs do not break off.



To fit

Note

Make sure that the fasteners are in place in the side of the door when the decor strip is fitted (2).