

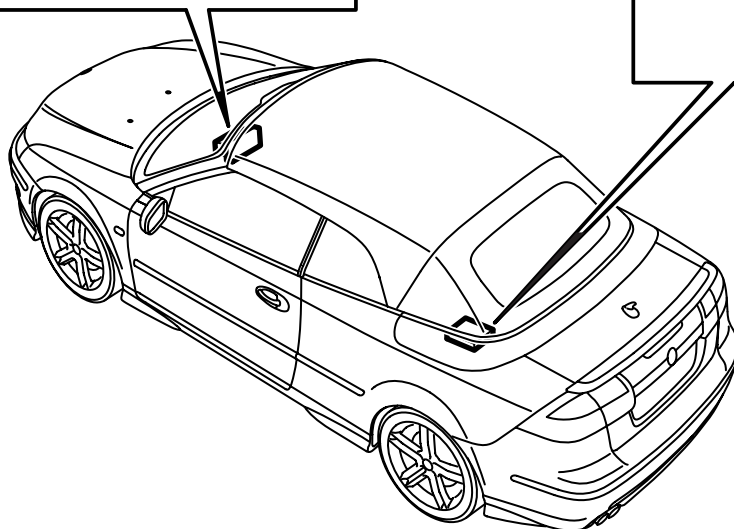
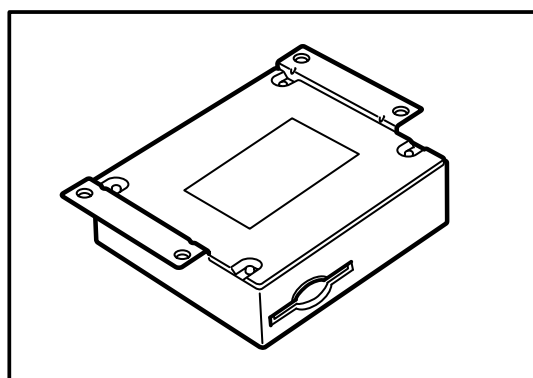
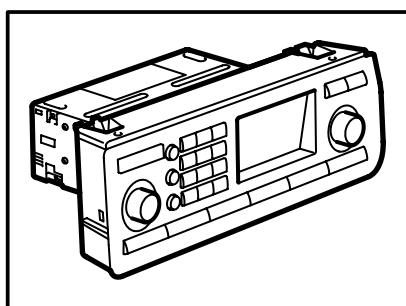


**MONTERINGSANVISNING · INSTALLATION INSTRUCTIONS
MONTAGEANLEITUNG · INSTRUCTIONS DE MONTAGE**

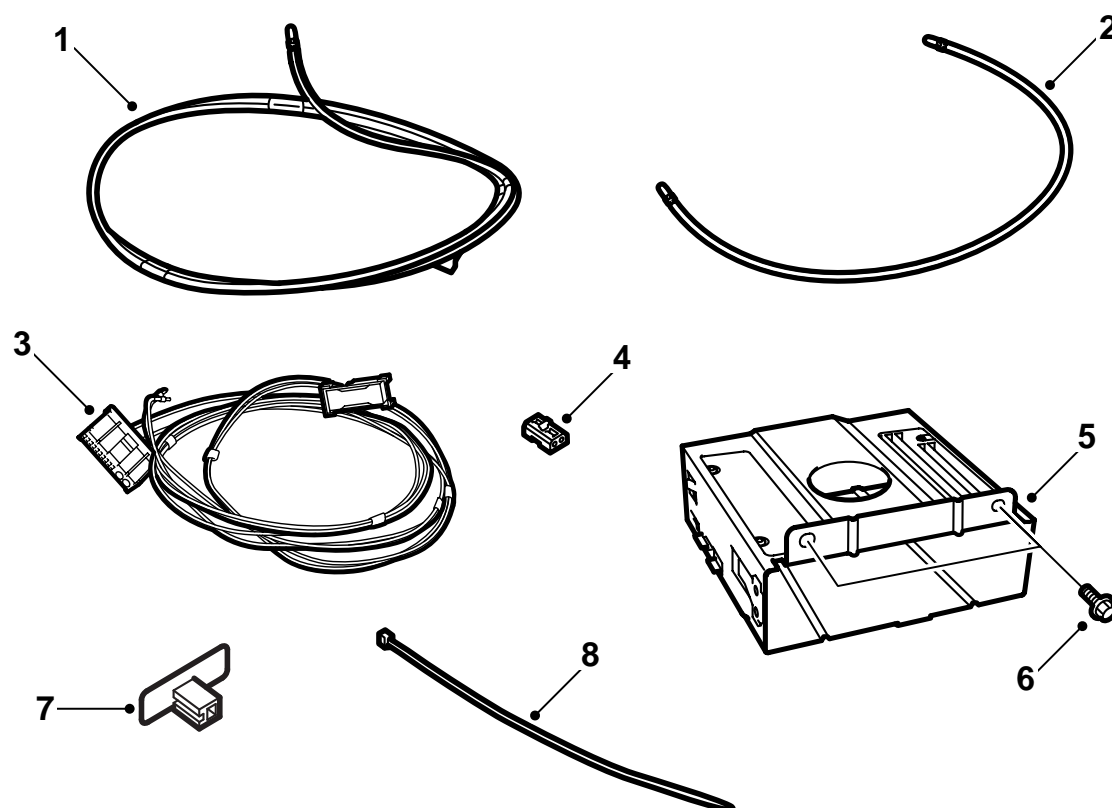
Saab 9-3 CV M04-

Integrated telephone

Accessories Part No.	Group	Date	Instruction Part No.	Replaces
12 832 505	9:39-13	Nov 03	12 832 515	



F930A301

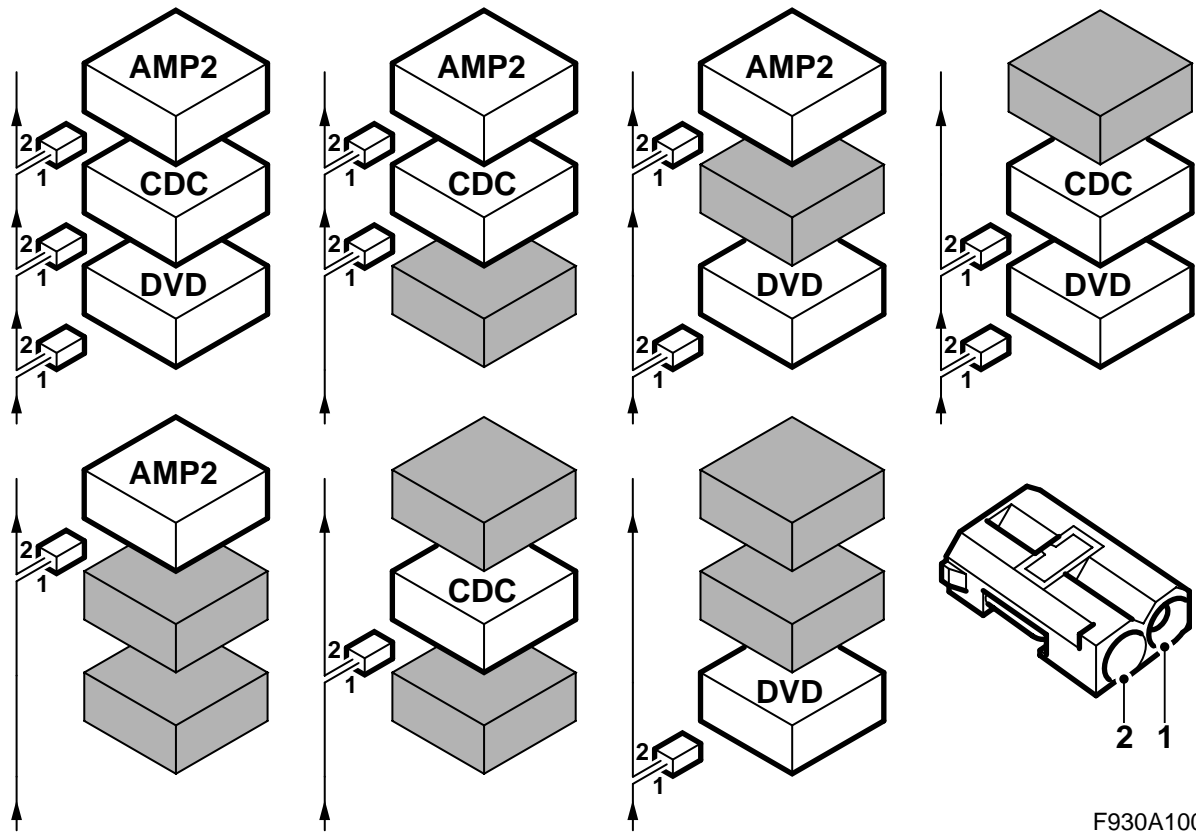


F930A302

- 1 Fibre optic cable, A-pillar - Torsion compartment, 2770 mm long
- 2 Fibre optic cable (x3)
 - Amplifier - Torsion compartment (870 mm long)
 - Luggage compartment console - Torsion compartment (1195 mm long)
 - Between the units in the luggage compartment console (455 mm long)
- 3 Wiring harness with fibre optic cable
- 4 Optical cable connector, 2-pin
- 5 Bracket for telematics unit
- 6 Screw (x2)
- 7 Antenna, Bluetooth
- 8 Cable tie (x17)

In addition, the following items are required (ordered separately)

- Telematics unit
- Control panel (certain cars)
- Antenna cable (certain models)
- Steering wheel (certain cars)



Bus Communication

Many parts of the car's electrical system communicate using a bus. There are three types of bus communication: P-bus (Powertrain Bus), I-bus (Instrument Bus) and O-bus (Optical bus). The audio system communicates via the O-bus together with the navigation system, the telephone system and others.

The O-bus is optical and is a ring bus. Two fibre optical cables are connected to each control module on the bus, one fibre optical cable for receiving and one for sending. Messages received are converted by each control module from a fibre optic signal to electrical and then converted back to optical for sending. The O-bus data transfer rate is 25 Mbit/s.

Important

It is very important that everything connected to the O-bus is connected in a specific order, see illustration, and that the ring is closed the whole time.

Connection in any other way than that described in these fitting instructions may result in several of the car's systems failing to work.

AMP1 is an amplifier behind the left-hand rear side trim

AMP2 is an amplifier by the REC

CDC is a CD changer by the REC

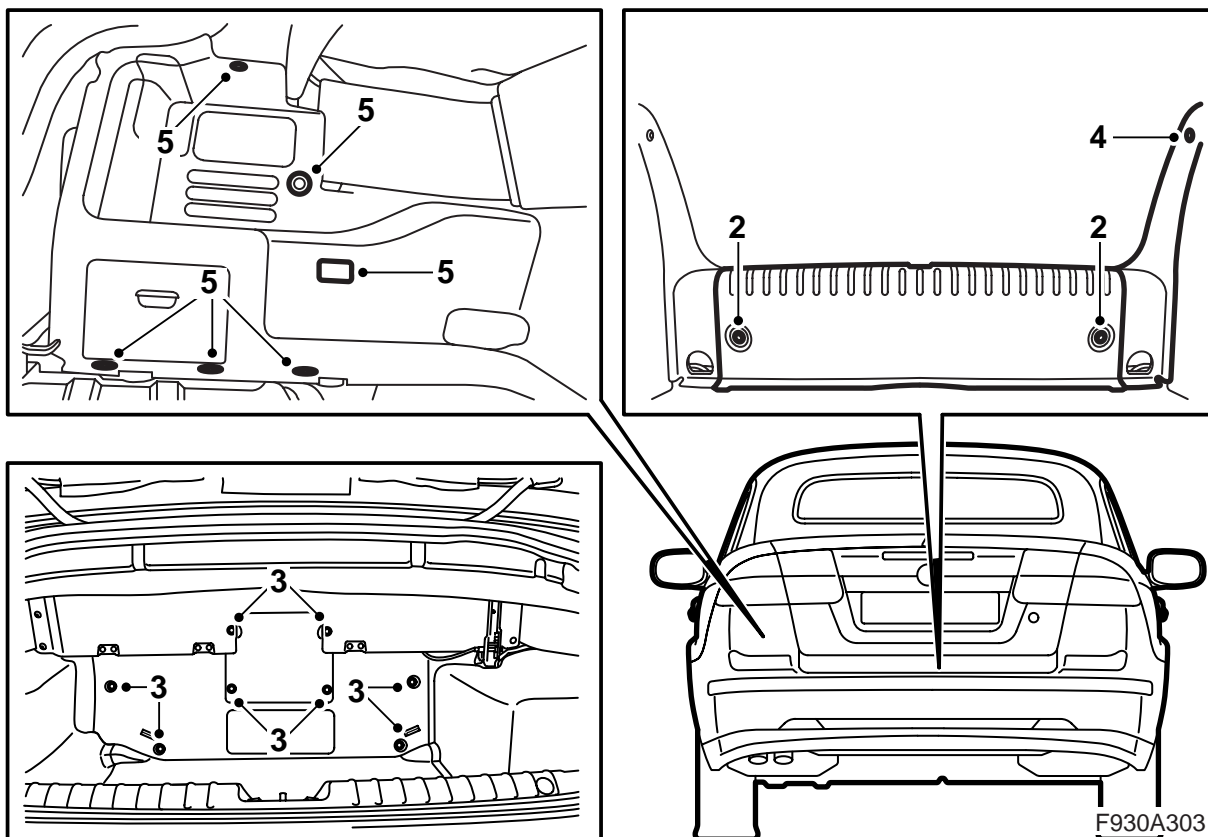
DVD is a DVD player by the REC

When fitting new equipment to be connected to the O-bus it is important that it is connected into the correct side of the existing equipment.

Important

Handle the fibre optic cables with care or the signal may be distorted.

- It is very important that the two leads in the connector are not confused with one another.
- Do not splice the cables.
- Do not bend the cable in a radius smaller than 25 mm.
- Do not expose the cable to temperatures exceeding 85 °C.
- Keep the cable ends free from dirt and grime.
- Do not expose the cable to impact as this may cause the transparent plastic to whiten, thereby reducing the intensity of the light and causing possible communication interruptions.
- The cable should not lie against any sharp edges as this may cause increased signal reduction.



- 1 Raise the soft top and open the boot lid.
- 2 Remove the carpet on the luggage compartment floor and remove the luggage compartment scuff plate.
- 3 Remove the rivets and lift out the front section of the luggage compartment trim.
- 4 Remove the side scuff plate on the left-hand side.
- 5 Remove the clips for the left-hand side trim and fold the trim aside. Unhook the strap on the rear side of the side trim and remove the connector from the luggage compartment lighting. Remove the side trim.

- 6 Check from the luggage compartment if there is a connection for the antenna cable in the centre of the torsion compartment and if a telematics unit is fitted in the centre of the torsion compartment. If a telematics unit is fitted then it must be removed together with the bracket but without the connectors being removed.

No telematics unit and no antenna connection: Continue with step 7.

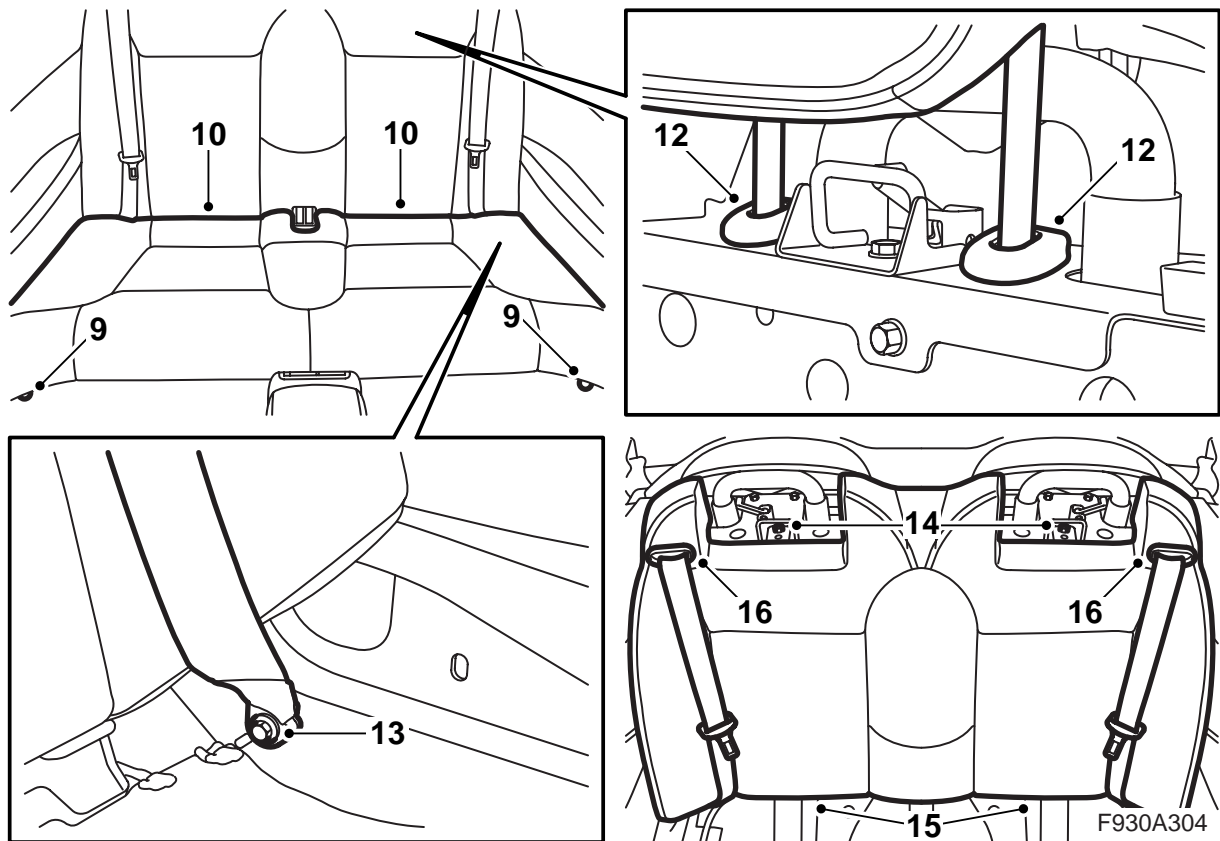
Telematics unit and blue antenna cable connection fitted but no violet antenna cable connection: Continue with step 7.

No telematics unit, and blue antenna cable connection fitted, but no violet antenna cable connection: Continue with step 7.

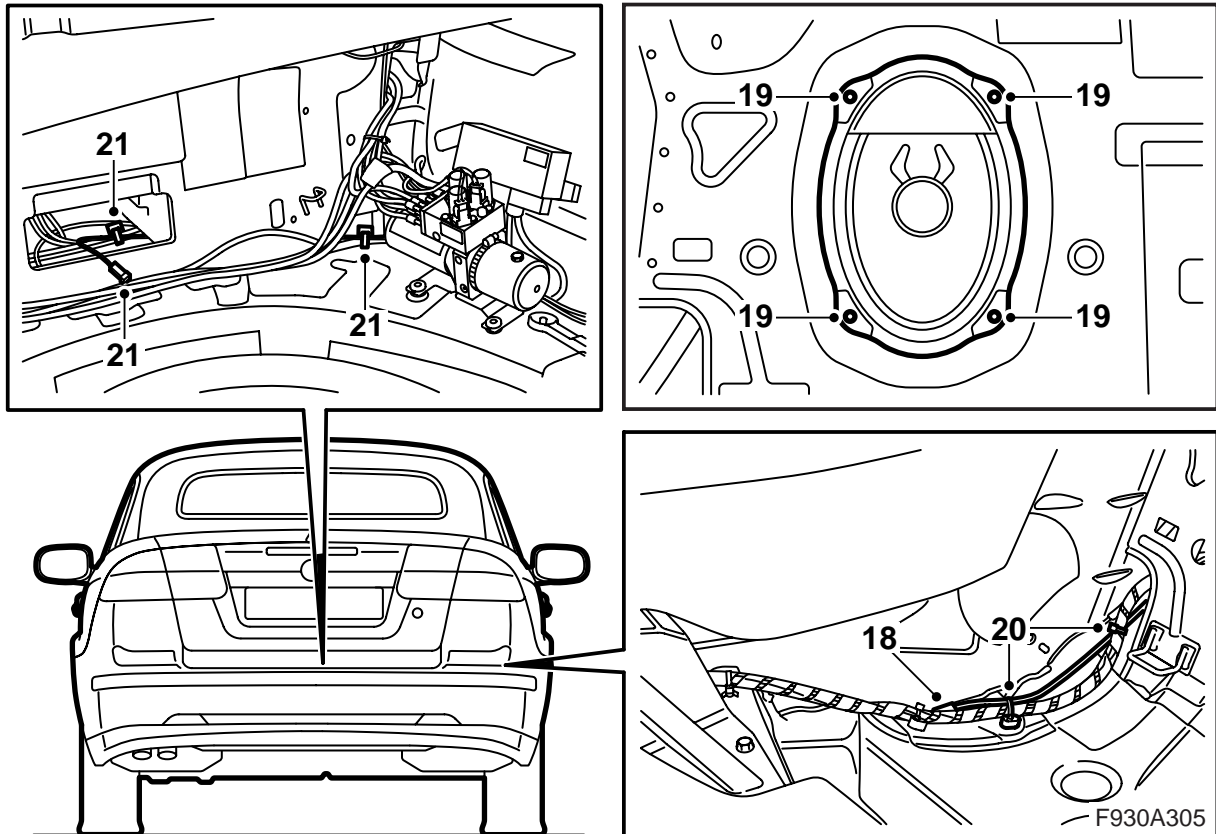
No telematics unit but violet antenna cable connection fitted: Continue with step 22.

Telematics unit and blue antenna cable connection fitted and connected, and violet antenna cable connection is fitted but not connected: Continue with step 61.

No telematics unit, but blue antenna cable connection fitted and violet antenna cable connection fitted: Continue with step 22.



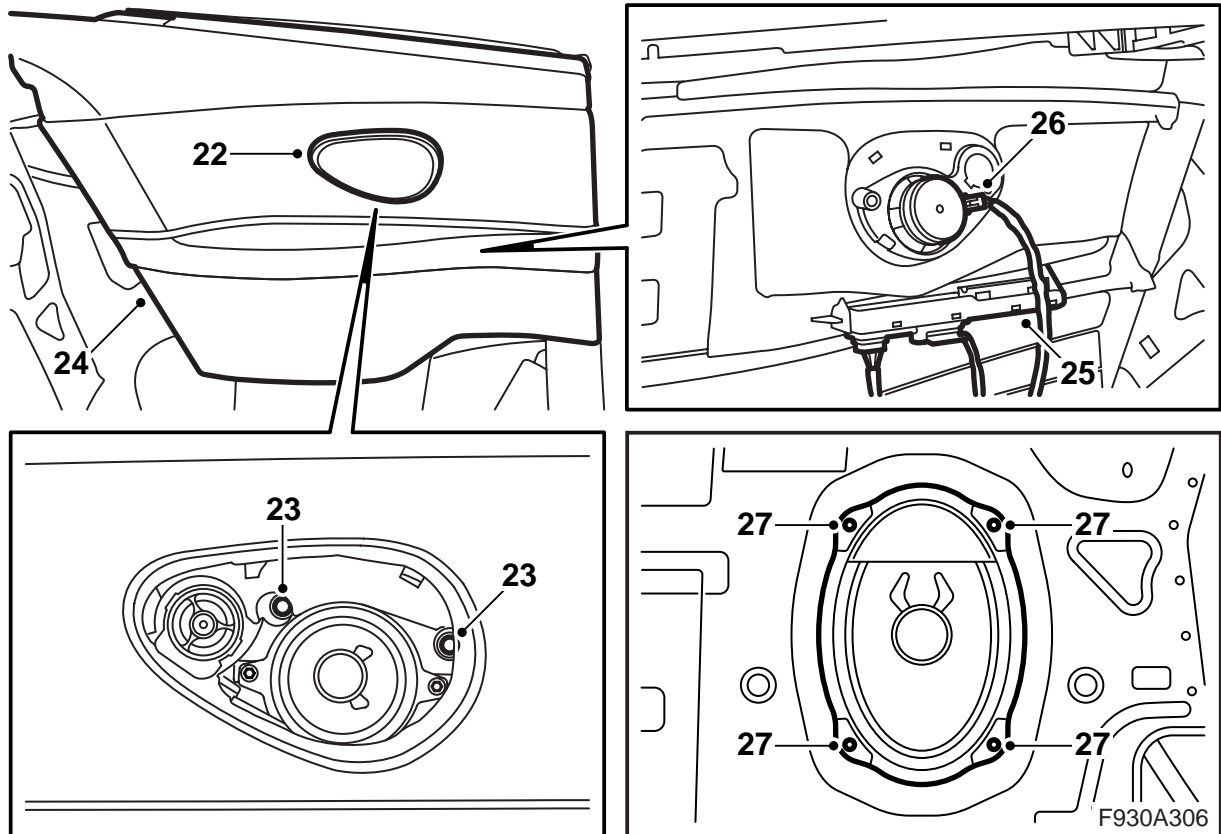
- 7 Fold down the soft top completely, but allow the soft top cover to remain open.
- 8 Open the rear side window on the left-hand side completely.
- 9 Remove the screws which hold the rear seat cushion at the front edge.
- 10 Lift up the cushion and pull it forwards so that it loosens.
- 11 Pull up both of the rear head restraints to the highest position.
- 12 Press in the lock on the head restraints' sleeves. Hold the lock pressed in and remove the head restraints.
- 13 Remove the screws for the seat belts' lower mounting.
- 14 Remove the two screws for the backrest cushion upper mounting.
- 15 Pull the backrest cushion lower section forwards and lift the backrest cushion upwards.
- 16 Press out the seat belt guide from the backrest cushion and move the seat belt out from the guide and the backrest cushion.
- 17 Lift out the backrest cushion.



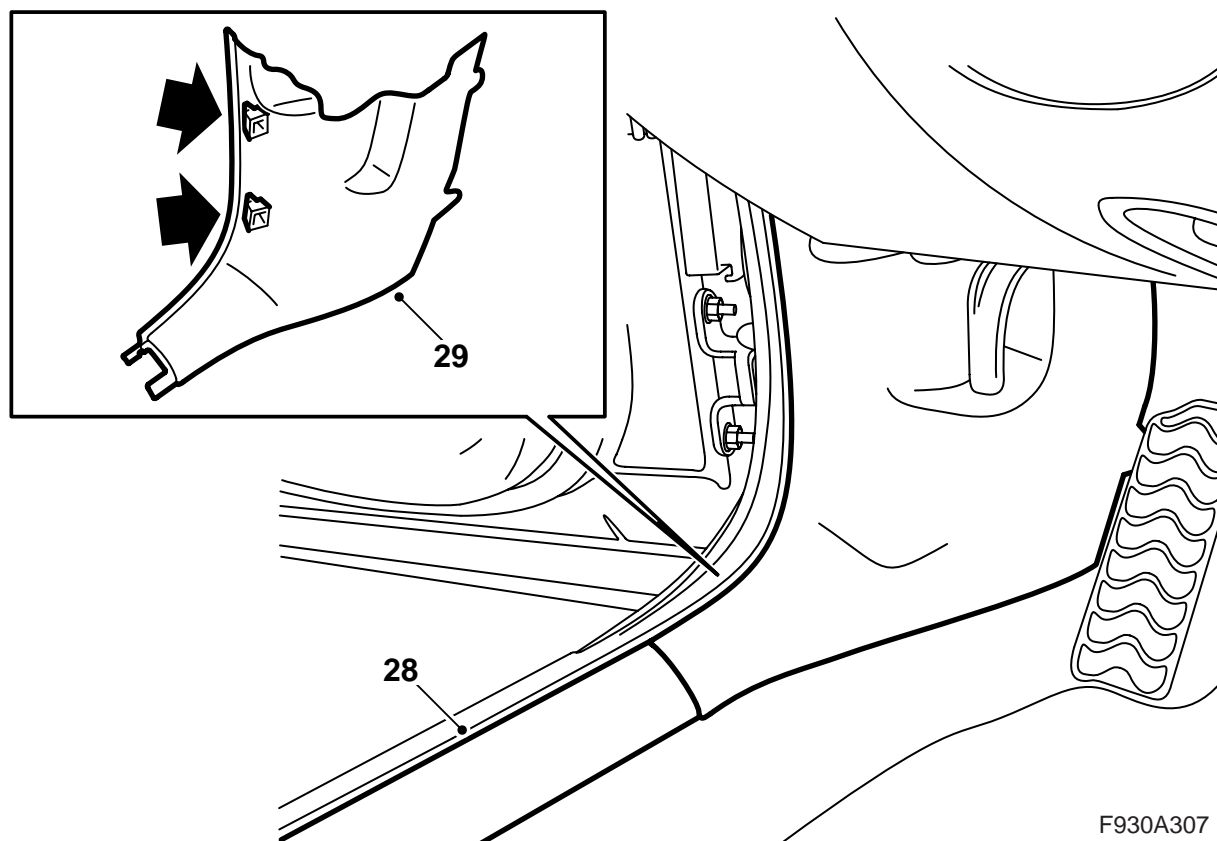
- 18 Locate the violet antenna cable connection at the seat belt lower mounting on the right-hand side of the car. Remove the connectors.
- 19 Remove the right-hand bass speaker or the right-hand cover.
- 20 Cut off the cable tie in order to be able to change the location of the antenna cable and fit a new cable tie in the same place, but only around the wiring harness.
- 21 Guide the antenna cable into the torsion compartment and position the antenna cable connection, together with the blue antenna cable connection if fitted, at the centre of the torsion compartment.

Without navigation: Continue with step 22.

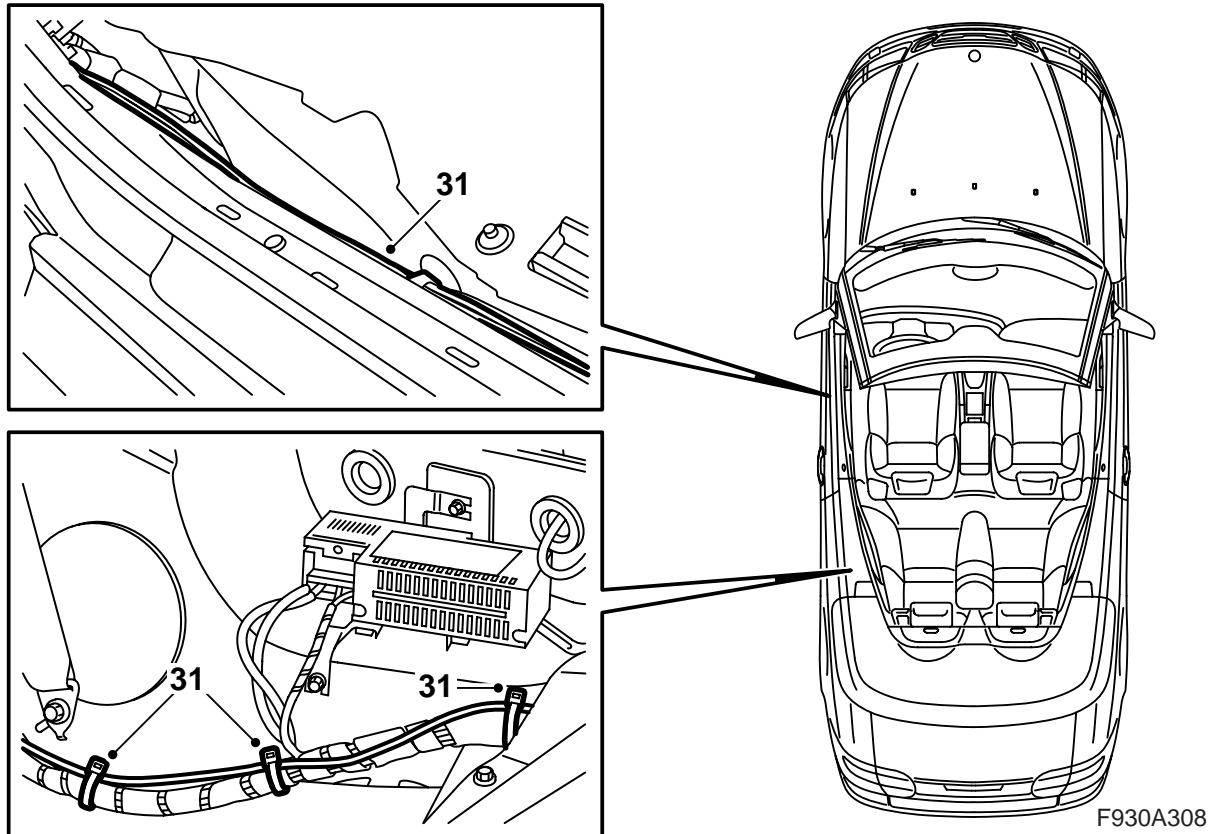
With navigation: Continue with step 61.



- 22 Carefully remove the speaker grille from the left-hand rear side trim. Use removal tool 82 93 474.
- 23 Remove the screws which hold the rear side trim on the left-hand side.
- 24 Lift the side trim upwards. Retain any rubber protection.
- 25 Unhook the control module from the side trim, but do not remove the control module connector as this means a diagnostic trouble code being generated.
- 26 Remove the speaker connector and remove the side trim.
- 27 Remove the left-hand bass speaker or the left-hand cover.



- 28 Remove the left-hand scuff plate.
- 29 Remove the lower section of the A-pillar trim on the left-hand side.



- 30 Position the left-hand front seat in its most forward position and fold the backrest forwards.
- 31 Take the fibre optic cable, A-pillar - Torsion compartment, from the kit and guide it from the connector at the left-hand lower A-pillar via the wiring harness by the scuff plate, under the rear seat and to the left-hand roll-bar in the torsion compartment. Secure the fibre optic cable with cable ties.

- 32 Raise the soft top completely and open the boot lid.

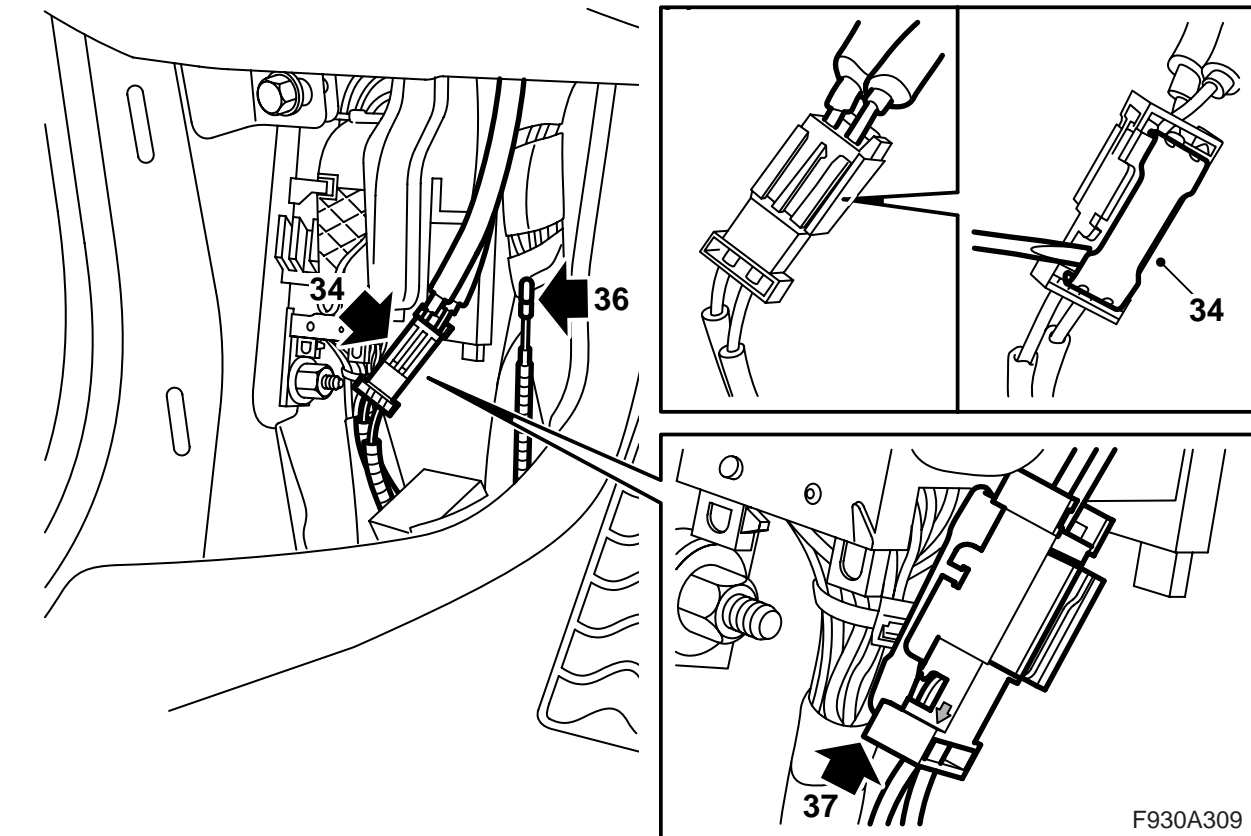
Note

The seat must be pushed to the rear position in order to access the whole route. Following which, push the seat back to the forward position.

Important

Handle the fibre optic cables with care or the signal may be distorted.

- Do not bend the cable in a radius smaller than 25 mm.
- The cables must not be exposed to knocks which cause the transparent plastic to whiten, which means that the light intensity is weakened. Such damage can cause an interruption to communication.
- The cable should not lie against any sharp edges as this may cause increased signal reduction.



- 33 Remove the battery cover and the battery negative cable.
- 34 Locate the connector with connected fibre optic cables at the left-hand lower A-pillar (taped to the cable duct) and lift up the connector lock tab.



WARNING

The visible red light is a class 1 laser. Do not look directly into the optical fibre or the control module connector at close range. A distance of less than 20 mm between your eyes and the light source may cause eye injury.

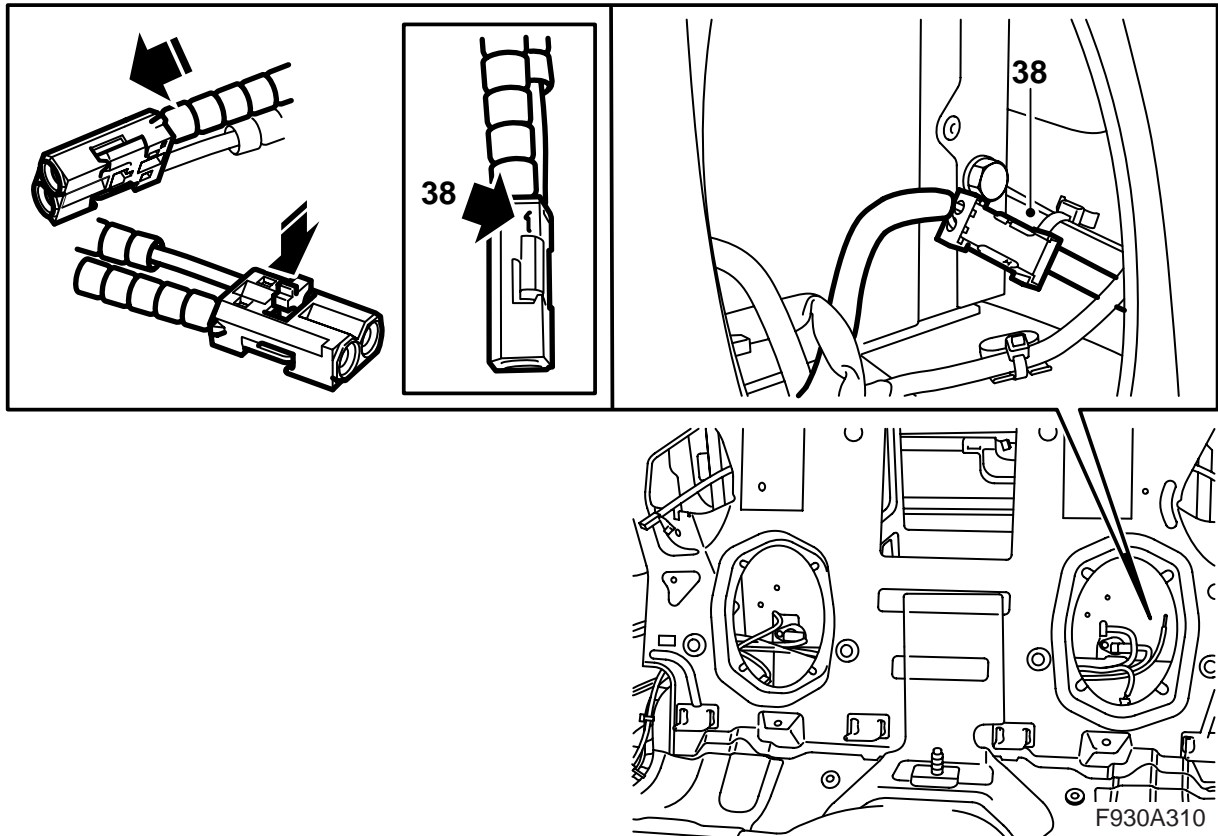
- 36 Remove the protective cover from the connection to the kit's fibre optic cable and fit the protective cover on the removed fibre optic cable's connection. Carefully move the fibre optic cable aside so that it is not damaged and position it behind the wiring harness.
- 37 Fit the connection on the fibre optic cable which was fitted in step 31 in the connector and fit the lock tab.

- 35 Remove the fibre optic cable from the position in the connector where the arrow points outwards, to the fibre optic cable.

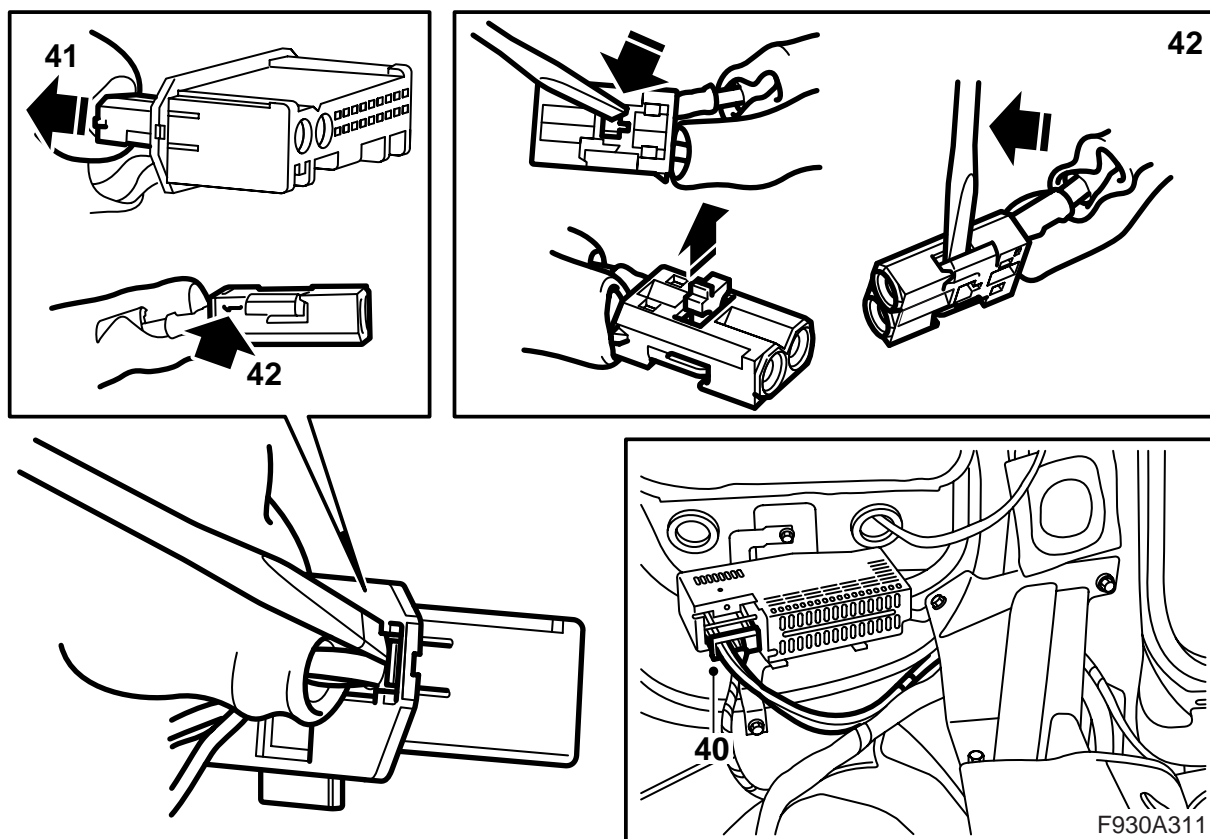
Important

Handle the fibre optic cables with care or the signal may be distorted.

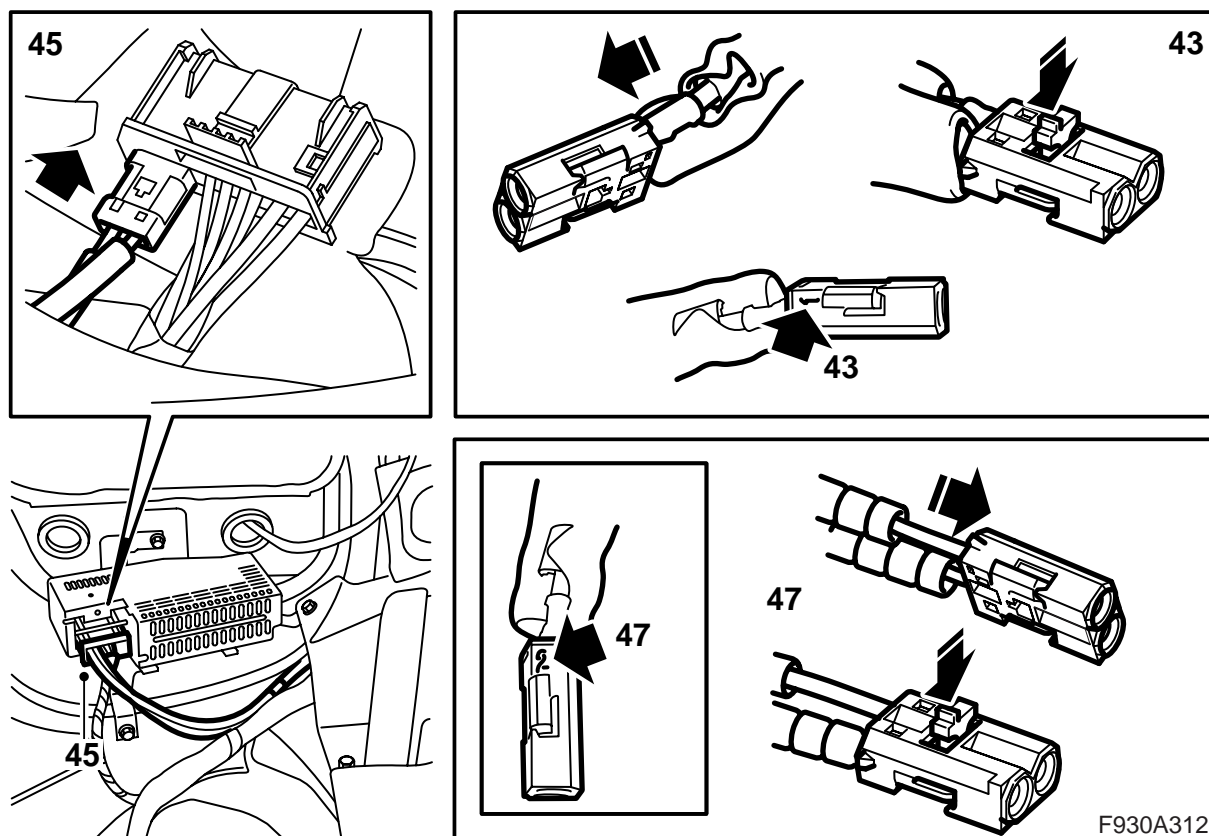
- It is very important that the two cables in the connector are not mixed up.
- Do not bend the cable in a radius smaller than 25 mm.
- Keep the cable ends free from dirt and grime.
- The cable should not lie against any sharp edges as this may cause increased signal reduction.



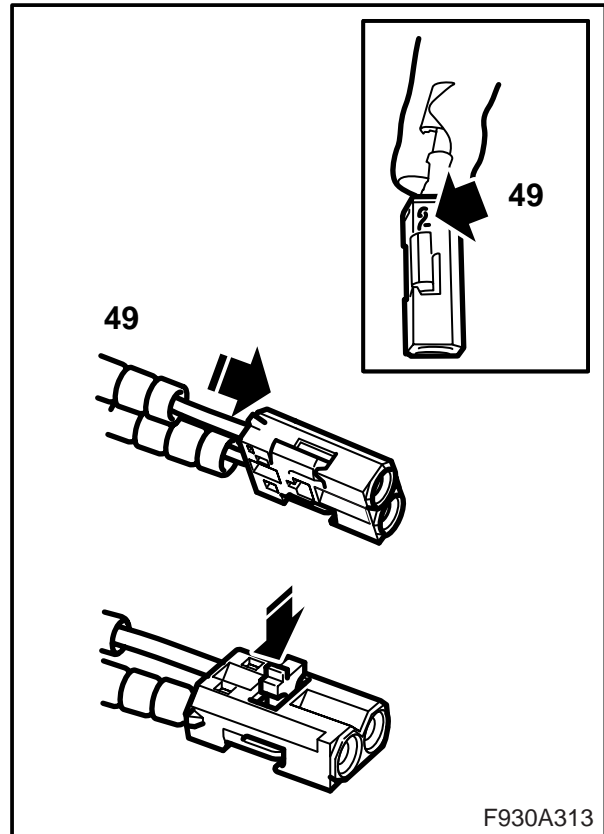
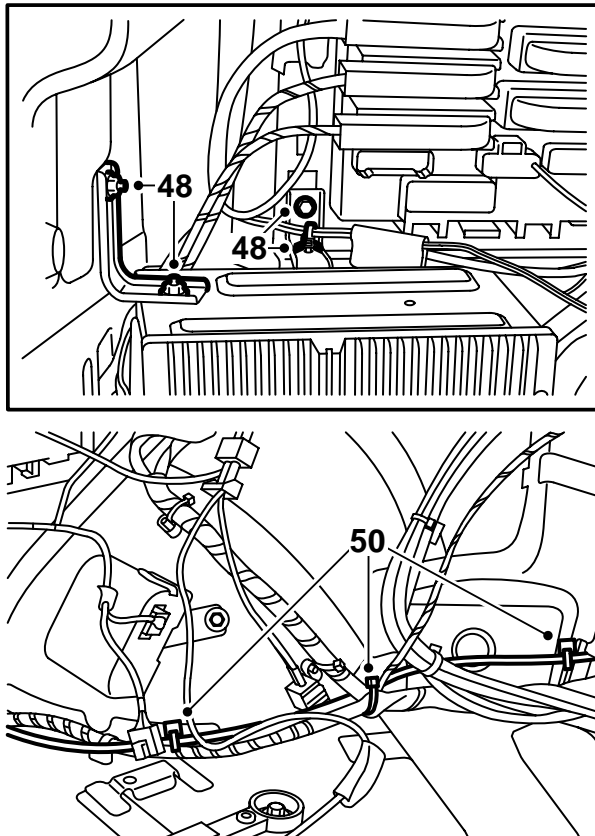
- 38 Fit the second connection to the fibre optic cable which was fitted in step 31 in position 1 in the kit's connector.
- 39 **Cars where the bracket at the REC is fitted:**
Continue with step 48.
- Cars where there is no bracket at the REC:**
Continue with step 40.



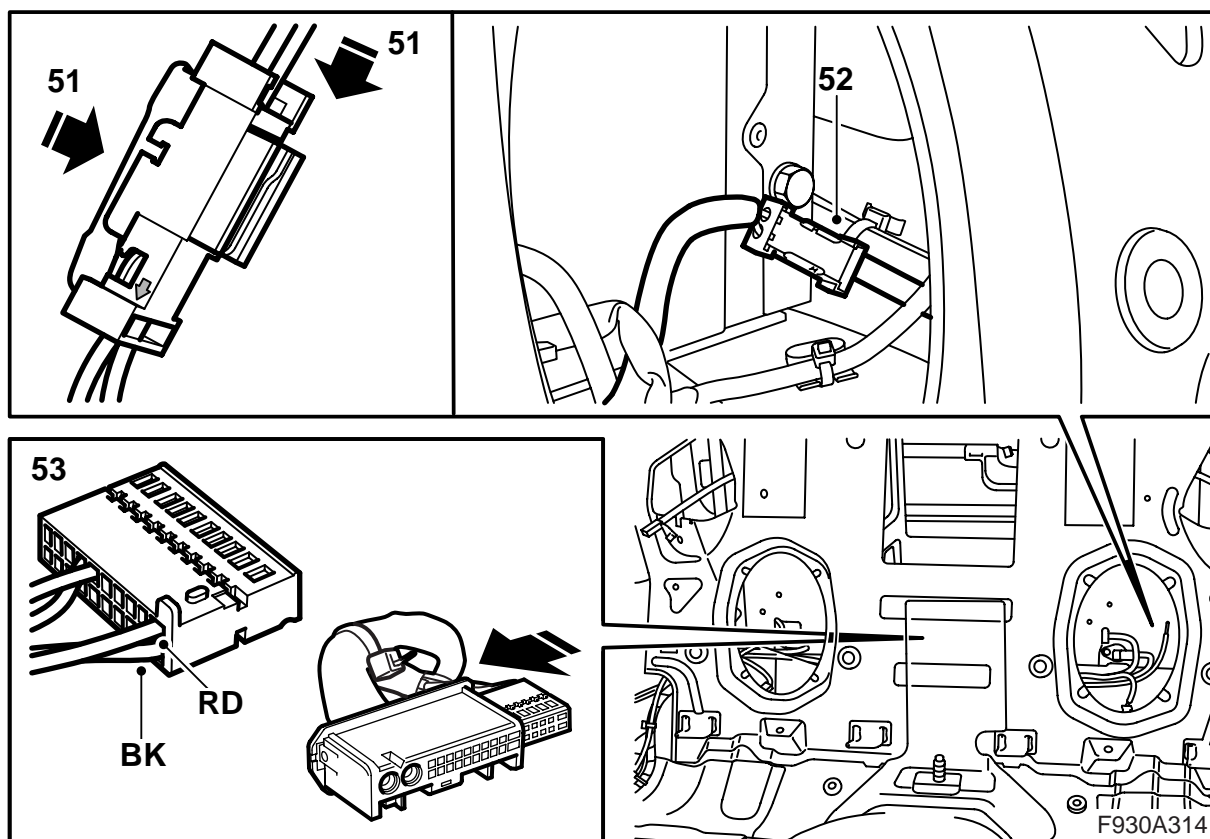
- 40 Remove the connector from the amplifier.
- 41 Remove the small connector from the large connector.
- 42 Remove the fibre optic cable connected to position 1 by opening the connector locking clip and carefully lifting the hook.



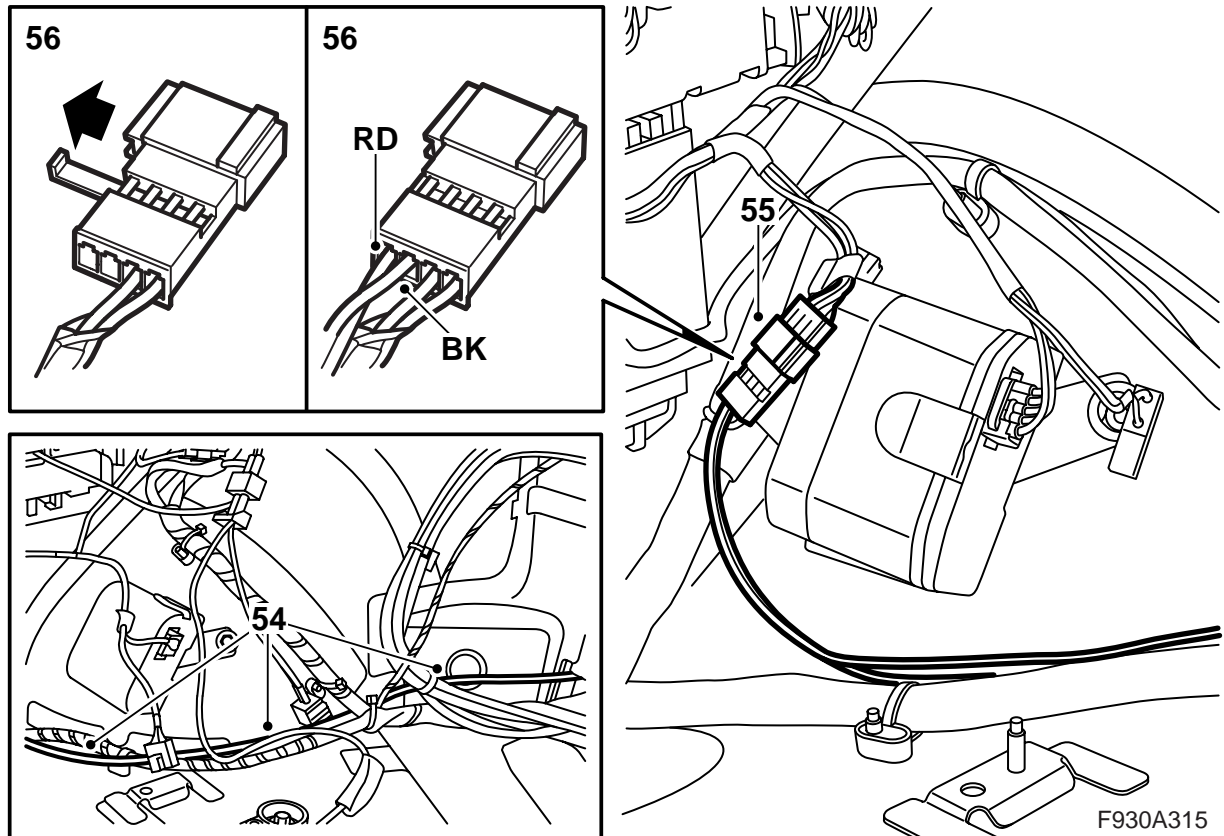
- 43 Take the fibre optic cable, Amplifier - Torsion compartment, from the kit, remove the protective cover from one connection and fit the connection in position 1 in the amplifier's small connector. Fit the lock.
 - 44 Fit the protective cover onto the removed fibre optic cable connection and carefully move the fibre optic cable aside in order to prevent damage.
 - 45 Fit the small connector in the large connector and connect the large connector to the amplifier.
 - 46 Guide the fibre optic cable back along the wiring harness and into the torsion compartment.
 - 47 Remove the protective cover from the fibre optic cable's other connection and fit the connection in position 2 in the connector inside the torsion compartment. Fit the lock.
- Continue with step 51.



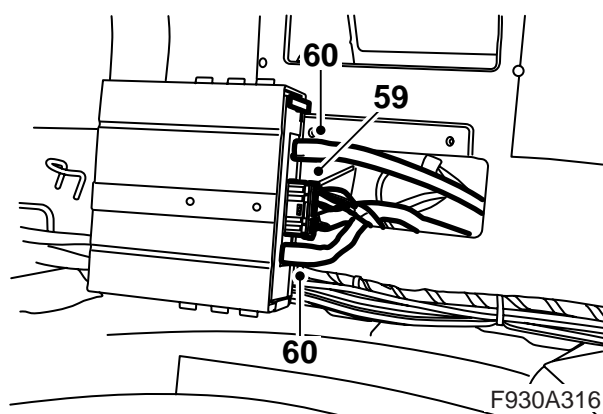
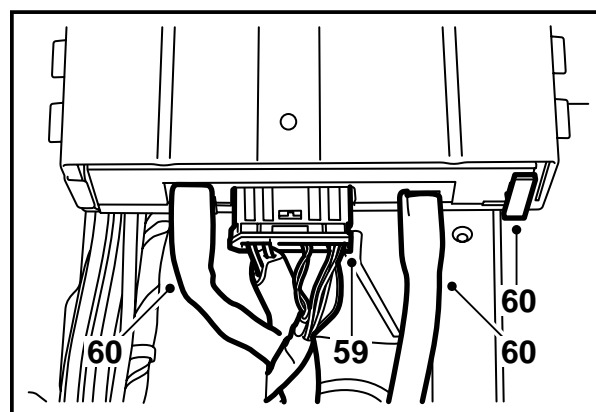
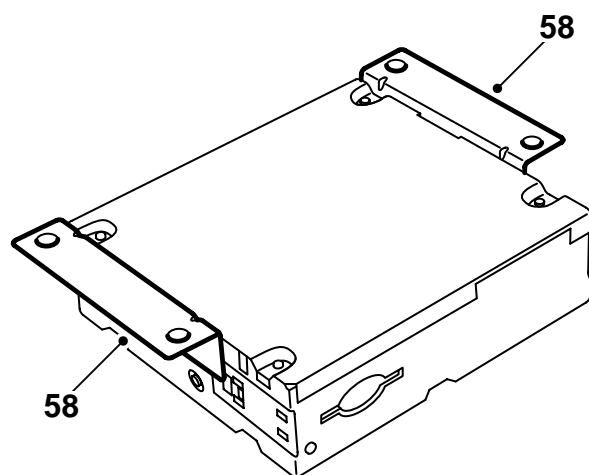
- 48 Remove the bracket and move it away to facilitate access. Remove the wiring harness cable tie from the bracket.
- 49 Take the fibre optic cable, Luggage compartment bracket - Torsion compartment, from the kit, remove the protective cover from one connection and fit the connection in position 2 in the connector inside the torsion compartment. Fit the lock.
- 50 Guide the fibre optic cable along the wiring harness to the left, out through the torsion compartment, and backwards to the bracket at the REC. Secure with cable ties, but do not tighten them fully as two further cables will be secured. Continue with step 51.



- 51 From the rear seat, guide in the kit's wiring harness with fibre optic cable in the torsion compartment. Fit the small connector with fibre optic cables in the connector and fit the lock tab.
- 52 Fit the connector to the wiring harness inside the torsion compartment. Guide the kit's wiring harness along the existing wiring harness and backwards to the REC. Secure them with cable ties inside the torsion compartment.
- 53 Locate the connector for the telematics unit in the centre of the torsion compartment and fit the cables from the kit's wiring harness in the connector in accordance with the following:
 Red (RD) cable (+) in position 10
 Black (BK) cable (-) in position 20
 Fit the connector for the telematics unit in the large connector in the kit's wiring harness.



- 54 Guide the loose ends of the kit's wiring harness along the existing wiring harness through the previously fitted cable ties along the fibre optic cable already fitted, backwards to the wiring harness branching to the REC. Tighten the cable ties.
- 55 Remove the tape which is securing the connector for the telematics unit power supply at the wiring harness and unplug the connector.
- 56 Remove the lock and fit the cables from the kit's wiring harness in the connector in accordance with the following:
 - Red (RD) cable (+) in position 1
 - Black (BK) cable (-) in position 2
- 57 Fit the lock, plug in the connector and secure it at the wiring harness to the REC.



58 Take the kit's telematics unit and remove any brackets from the telematics unit.

59 Fit the kit's telematics unit in the bracket, a click should be heard, and plug in the connector to the telematics unit.

Important

Handle the fibre optic cables with care or the signal may be distorted.

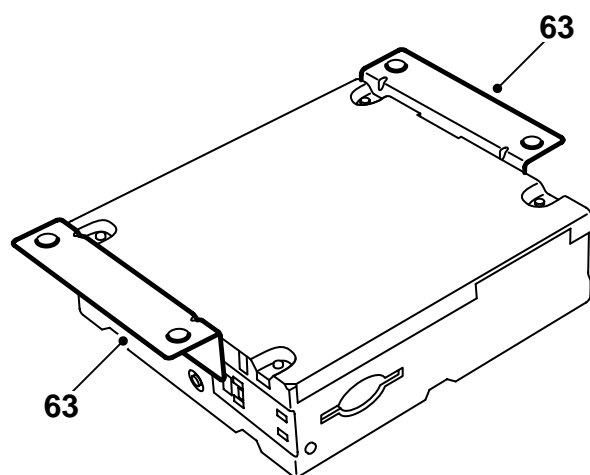
- It is very important that the two cables in the connector are not mixed up.
- Do not bend the cable in a radius smaller than 25 mm.
- Keep the cable ends free from dirt and grime.
- The cable should not lie against any sharp edges as this may cause increased signal reduction.

60 Connect the antenna cable(s) and the bluetooth antenna to the telematics unit.

Important

Be careful with the bluetooth antenna as it is very easily damaged.

Continue with step 67.

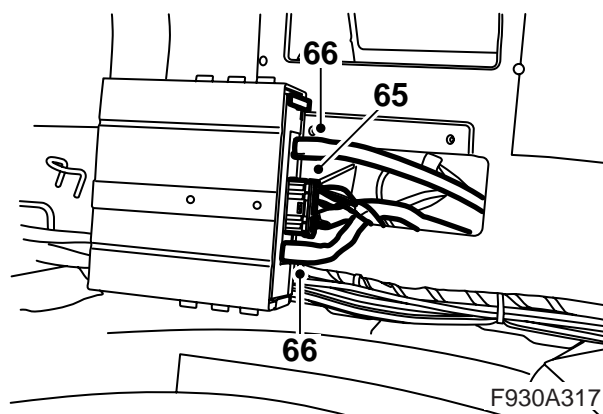
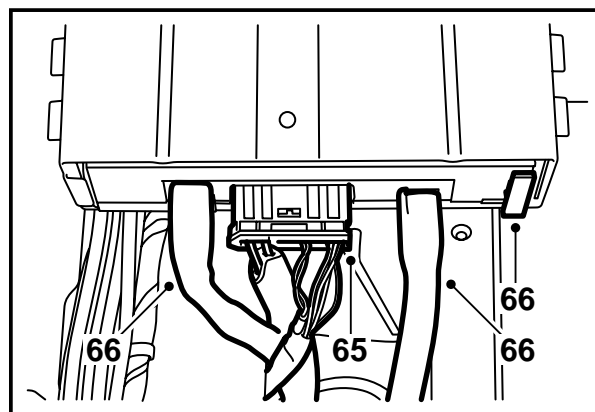


- 61 Raise the soft top and open the boot lid.
- 62 Disconnect the negative battery cable.
- 63 Take the kit's telematics unit and remove any brackets from the telematics unit.
- 64 Remove the connectors from the existing telematics unit and remove the telematics unit.
- 65 Fit the kit's telematics unit in the bracket, a click should be heard, and plug in the connector to the telematics unit.

Important

Handle the fibre optic cables with care or the signal may be distorted.

- It is very important that the two cables in the connector are not mixed up.
- Do not bend the cable in a radius smaller than 25 mm.
- Keep the cable ends free from dirt and grime.
- The cable should not lie against any sharp edges as this may cause increased signal reduction.

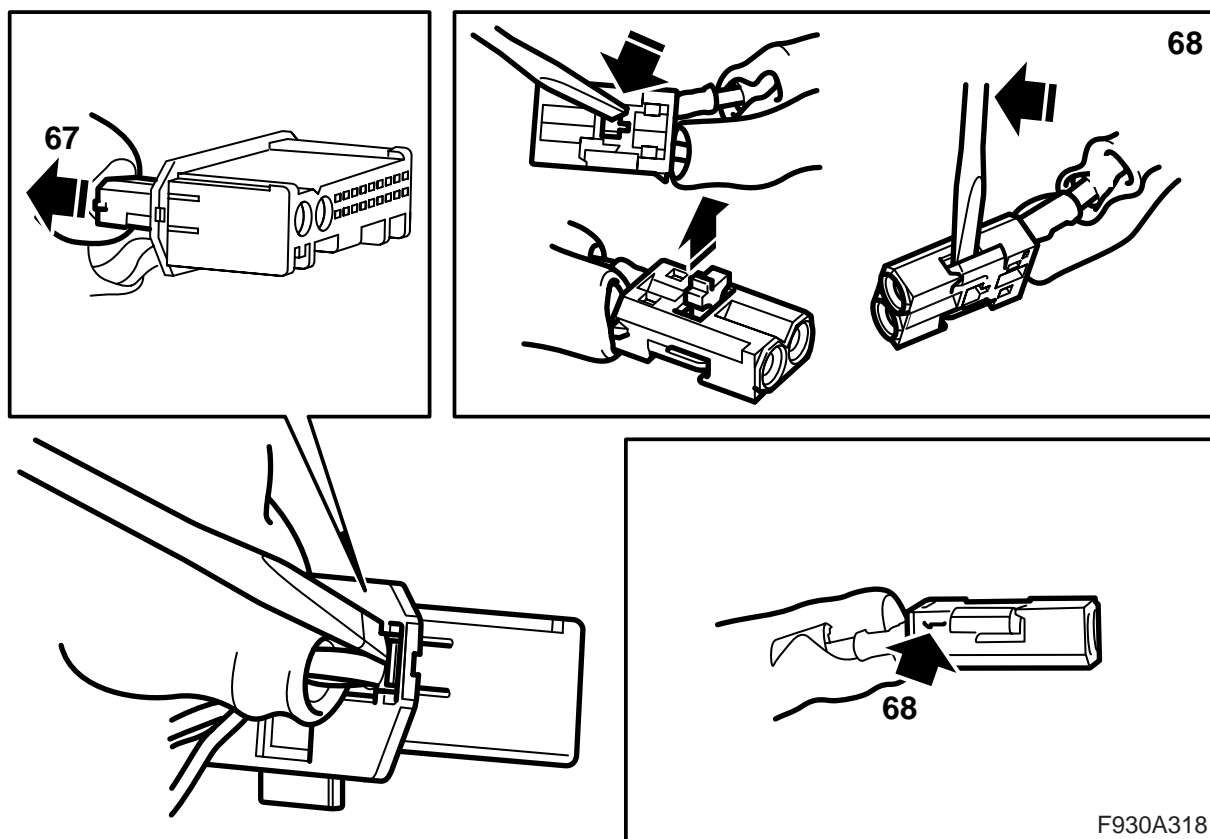


- 66 Connect the antenna cable(s) and the bluetooth antenna to the telematics unit.

Important

Be careful with the bluetooth antenna as it is very easily damaged.

Proceed to step 73.

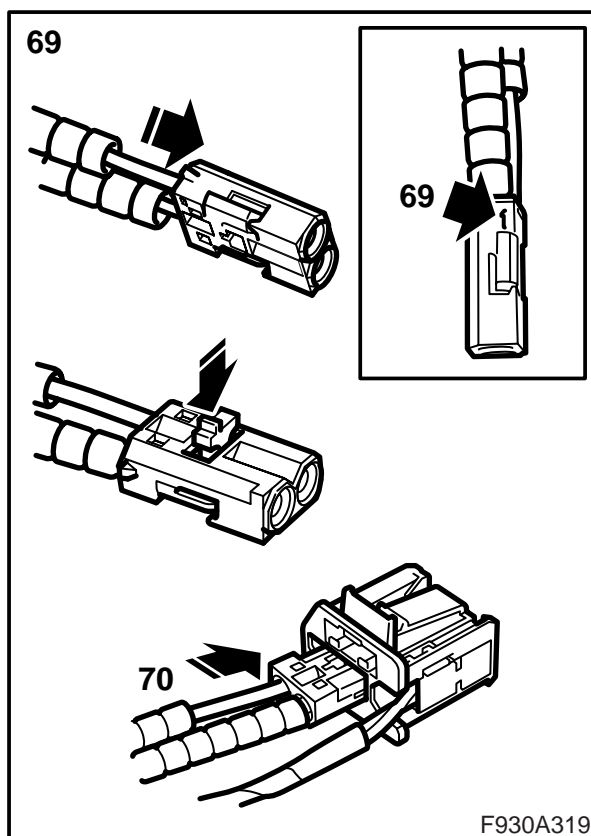
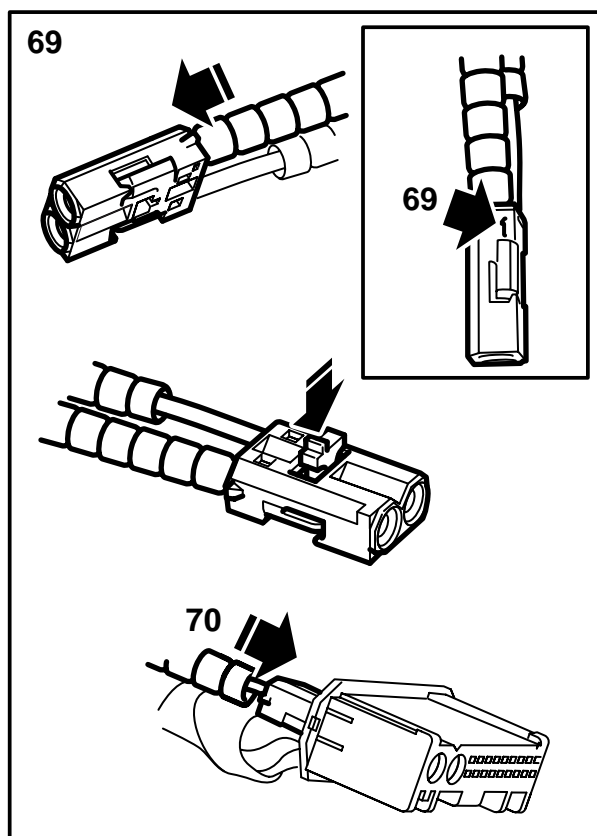


- 67 **Cars where there is no bracket at the REC:**
Continue with step 74.

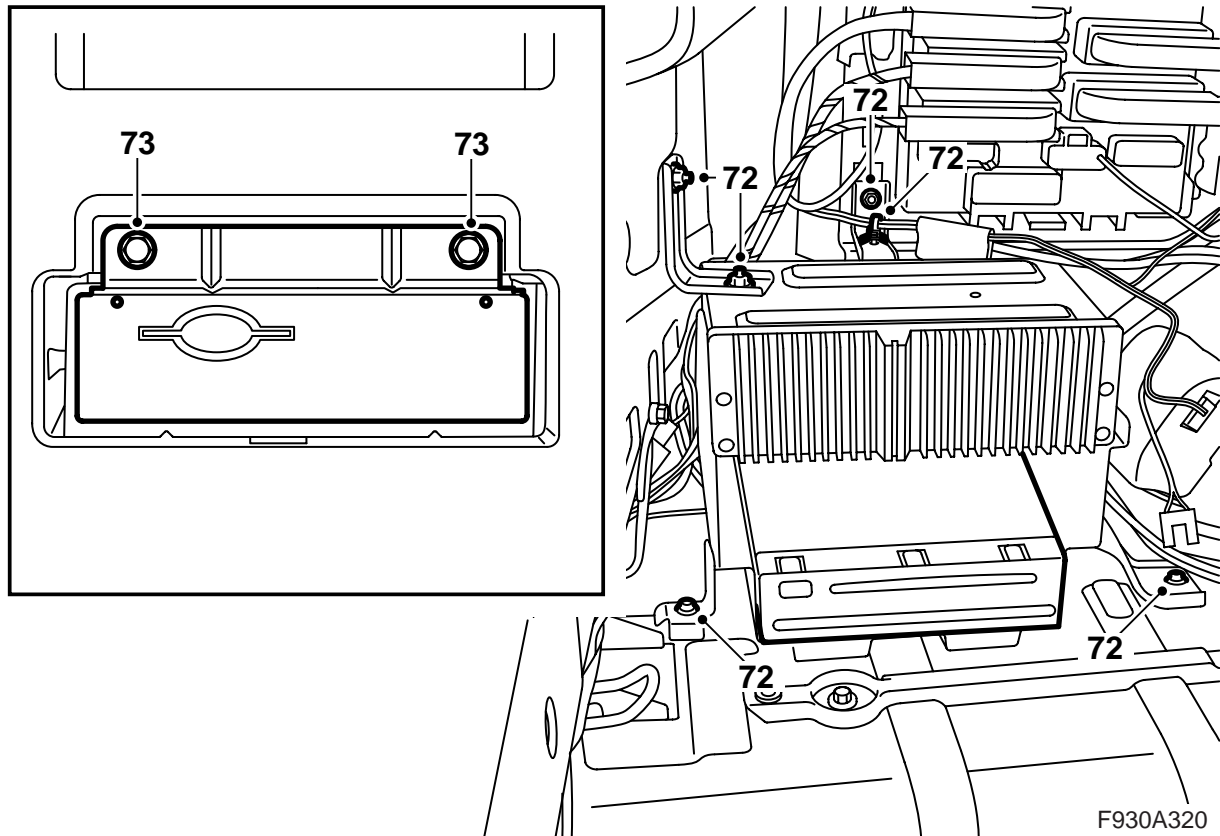
Bracket with amplifier or CD changer is fitted at the REC: Remove the amplifier or CD changer connector and remove the small connector from the large connector.

Bracket with amplifier or CD changer is fitted at the REC: Remove the CD changer connector and remove the small connector from the large connector.

- 68 **Amplifier and/or CD changer is fitted:** Remove the fibre optic cable connected to position 1 in the removed connector by opening the connector locking clip and carefully lifting the hook. Carefully guide the fibre optic cable away so that it is not damaged.



- 69 Amplifier and/or CD changer fitted:** Remove the protective cover from the second connection on the fibre optic cable previously fitted (from the torsion compartment). Fit the connection in position 1 in the small connector. Fit the lock. Fit the protective cover on the removed fibre optic cable.
- 70 Amplifier and/or CD changer fitted:** Fit the small connector in the amplifier and the CD changer connector.
- 71 Amplifier and/or CD changer fitted:** Plug in the amplifier and CD-changer connector.
Continue with step 72.



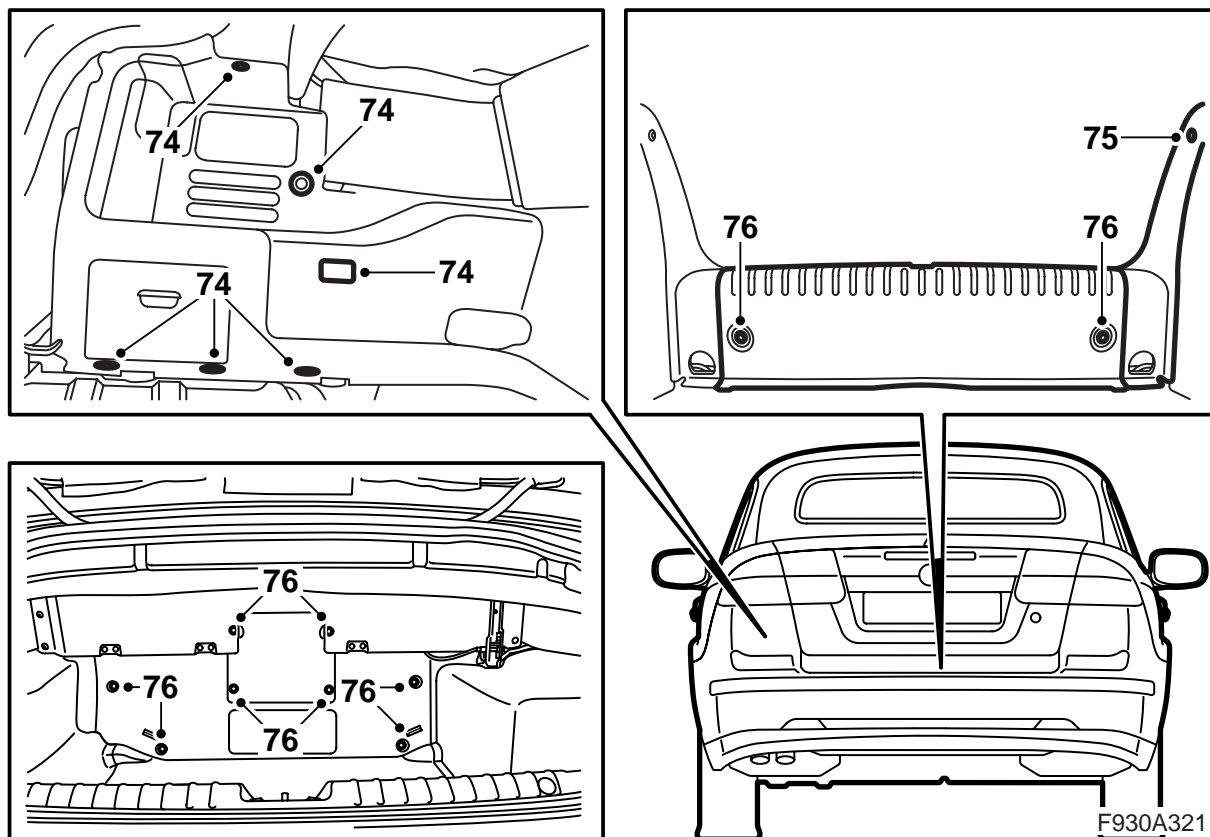
72 Fit the bracket. Also tighten the nut on the topside of the bracket. Secure the wiring harness cable tie in the hole in the bracket.

73 Position the bracket for the telematics unit in the torsion compartment and fit it.

Important

Handle the fibre optic cables with care or the signal may be distorted.

- It is very important that the two cables in the connector are not mixed up.
 - Do not bend the cable in a radius smaller than 25 mm.
 - Keep the cable ends free from dirt and grime.
 - The cable should not lie against any sharp edges as this may cause increased signal reduction.
-



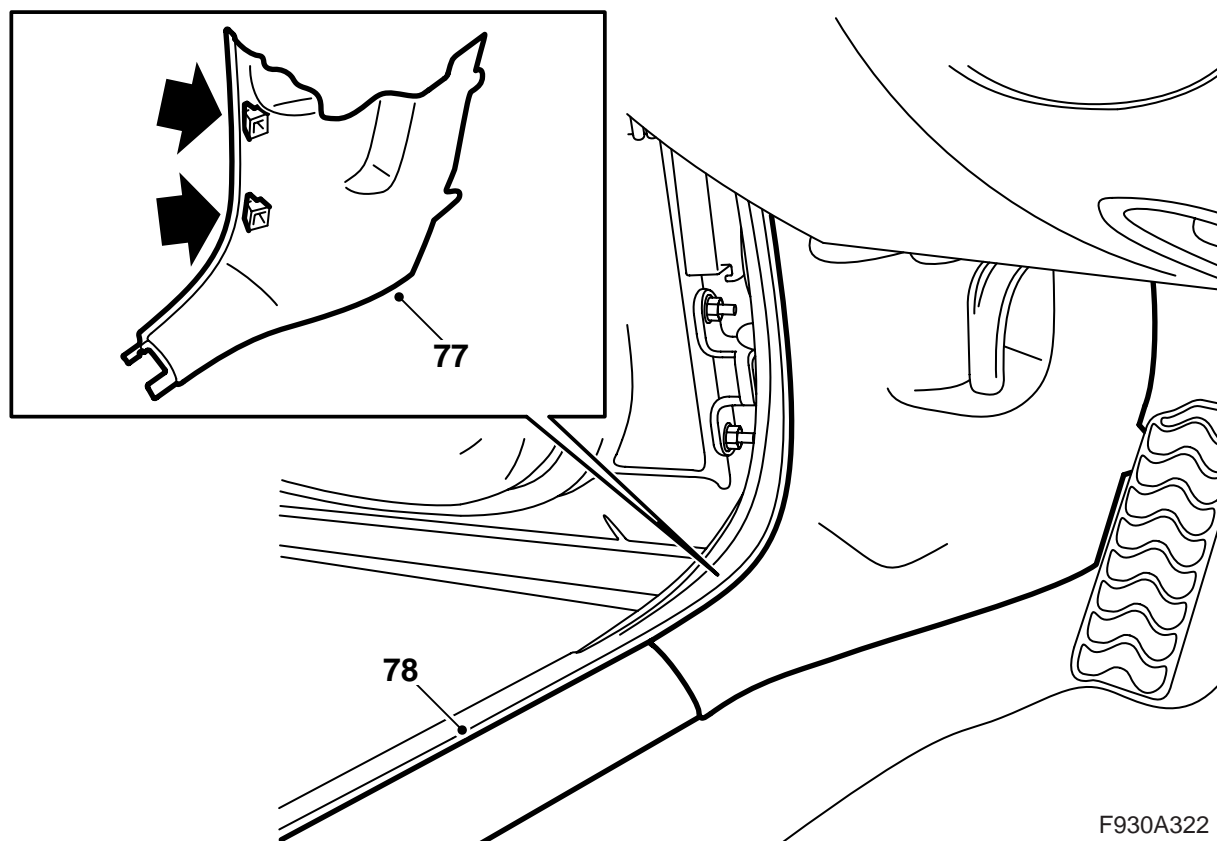
74 Fit the left-hand side trim, connect the luggage compartment lighting and hook the strap on. Fit the clips.

75 Fit the side scuff plate.

76 Fit the front section of the luggage compartment trim, the scuff plate and fit the carpet to the luggage compartment floor.

Without navigation: Continue with step 77.

With navigation: Continue with step 85.

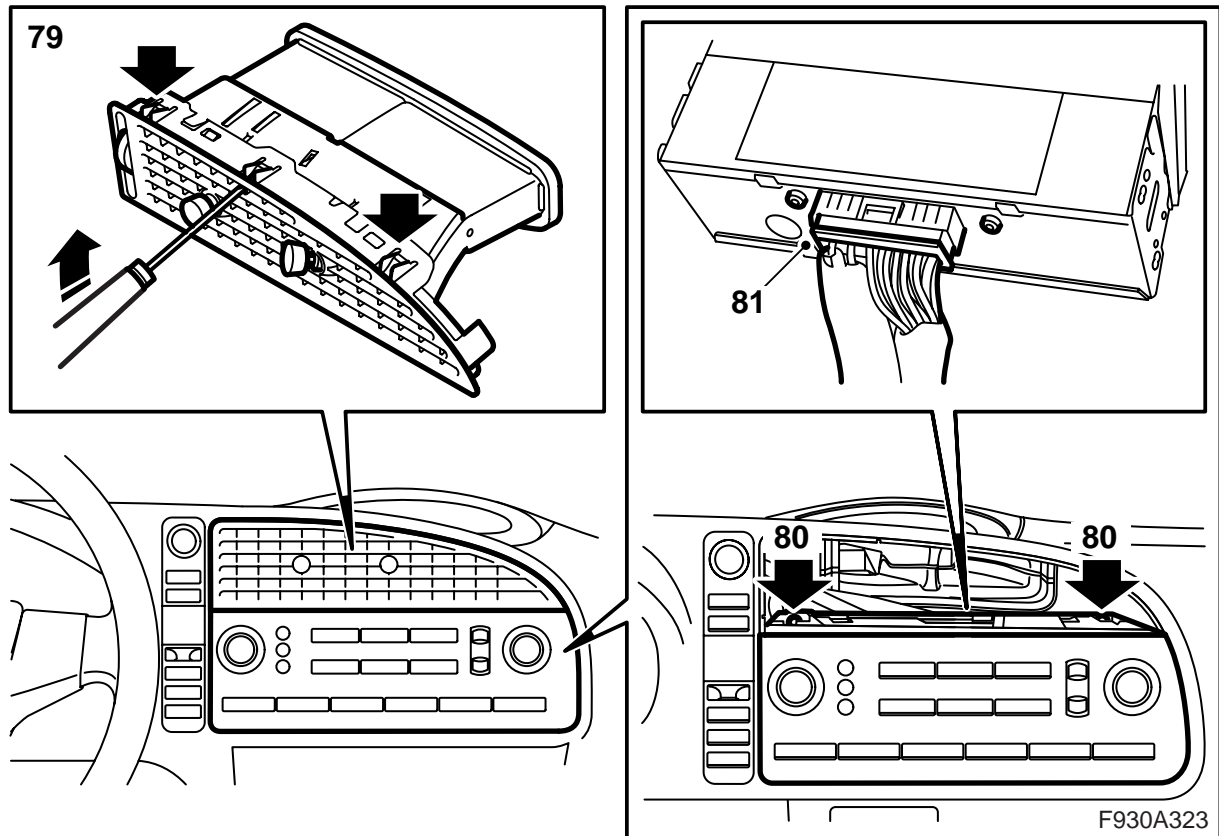


77 Fit the A-pillar trim.

78 Fit the scuff plate.

Cars where the infotainment control panel has no screen: Continue with step 79.

Cars where the infotainment control panel has a screen: Continue with step 85.



79 Remove the centre air vent in the dashboard by carefully bending in the hooks accessible through the grille.

Note

Take care to bend the correct hooks. Hooks holding together the air outlet are also visible behind the grille.

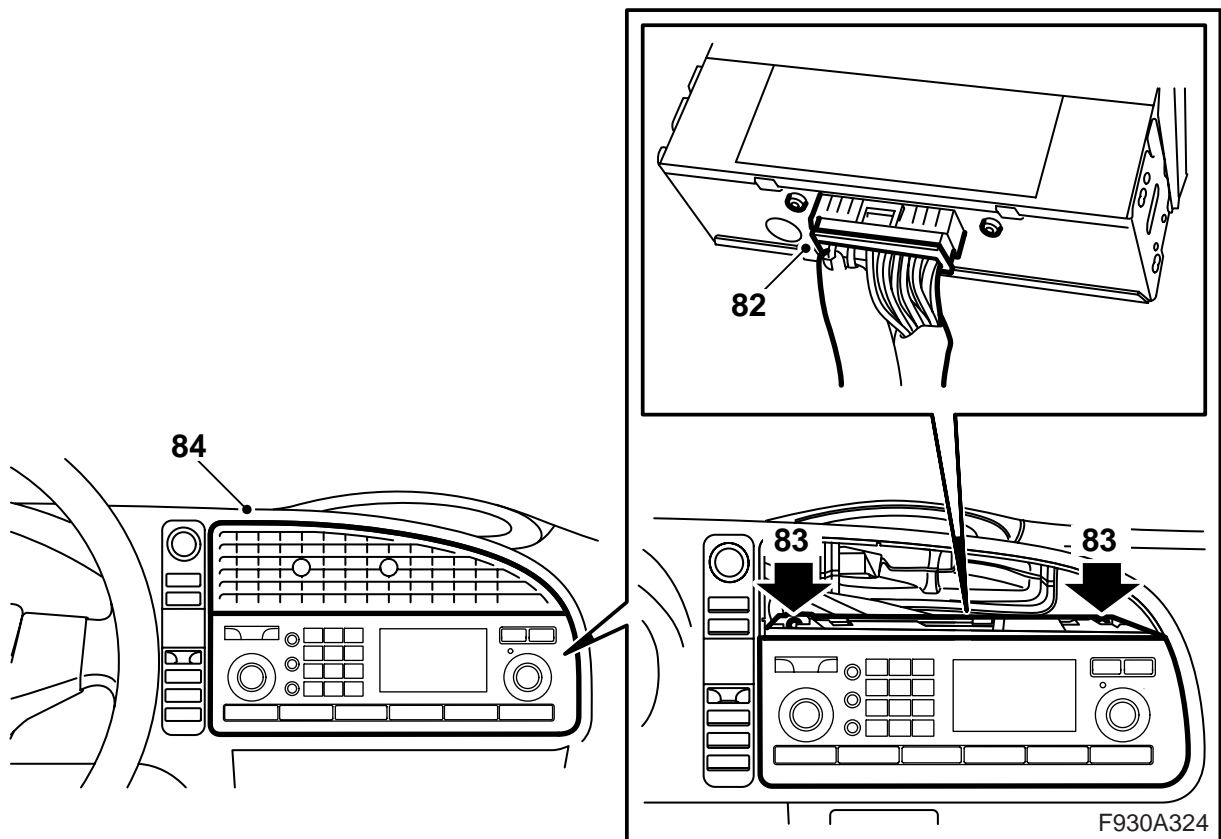
80 Remove the retaining screws for the infotainment control panel.

81 Remove the control panel and remove the connector.



WARNING

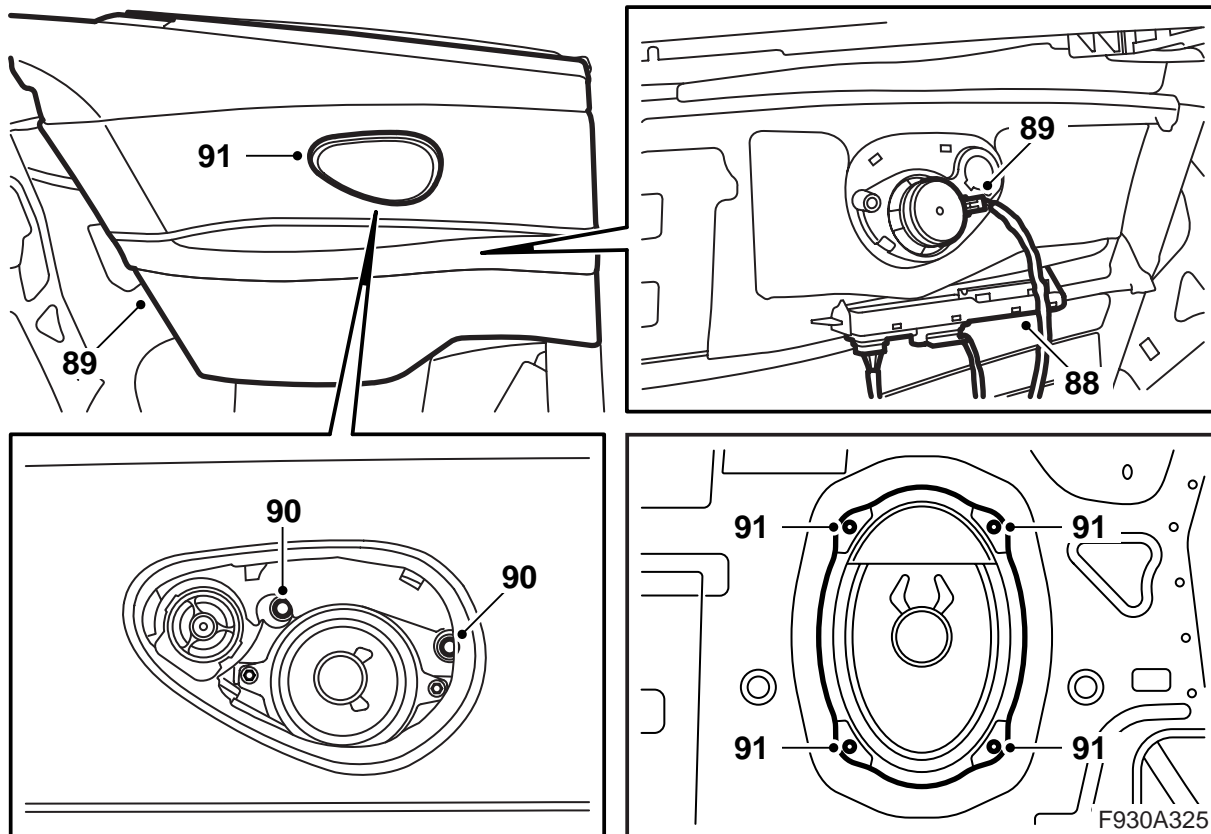
The visible red light is a class 1 laser. Do not look directly into the optical fibre or the control module connector at close range. A distance of less than 20 mm between your eyes and the light source may cause eye injury.



82 Connect the connector to the kit's control panel.

83 Fit the control panel.

84 Position and fit the air vent.



85 Cars where the left-hand rear side trim and/or rear seat have been removed: Connect the battery negative cable.

86 Cars where the left-hand rear side trim and/or rear seat have been removed: Lower the soft top completely but allow the soft top cover to remain open.

87 Cars where only the rear seat has been removed: Connect and fit the right-hand bass speaker or fit the right-hand cover.

Proceed to step 92.

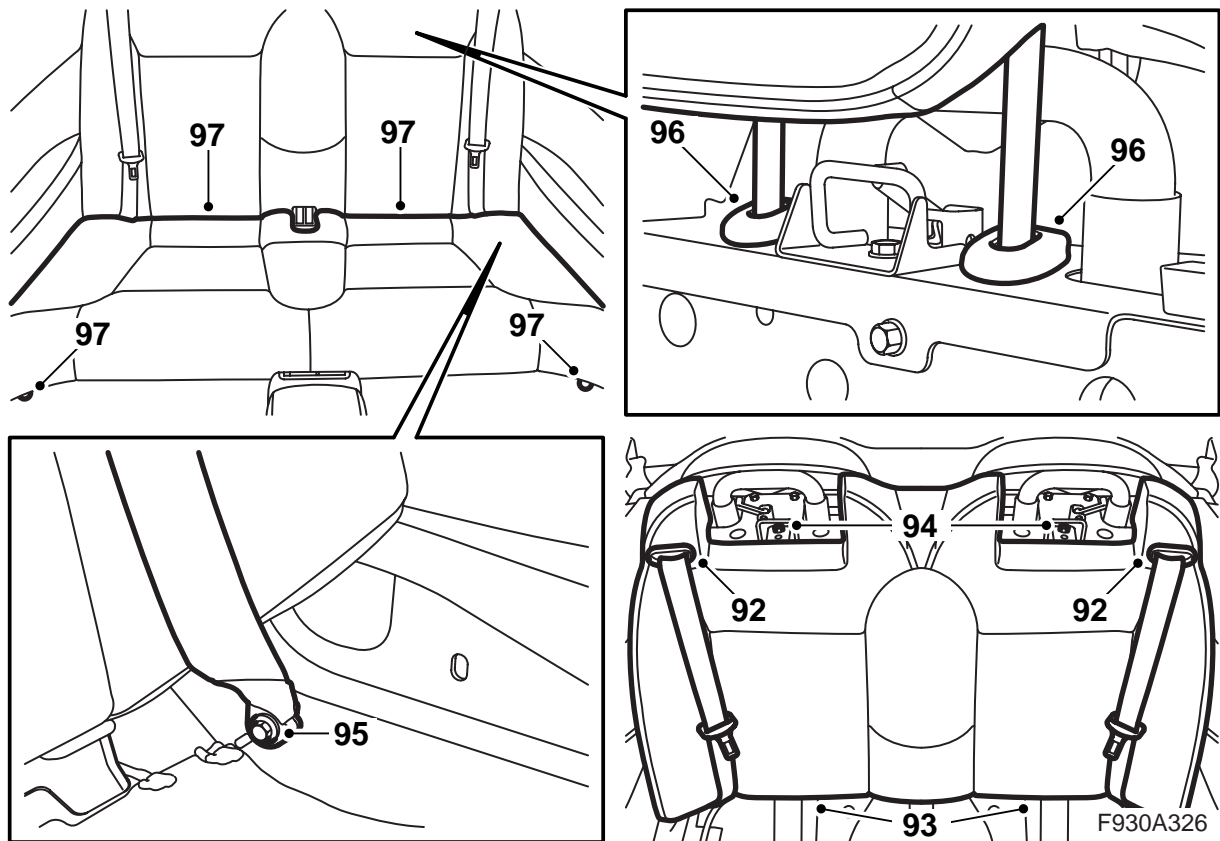
Cars where the left-hand rear side trim and rear seat have been removed: Continue with step 88.

88 Cars where the left-hand rear side trim and rear seat have been removed: Check that the damp protection is intact and replace if necessary. Fit the control module in the side trim.

89 Cars where the left-hand rear side trim and rear seat have been removed: Connect the speaker connector, position the side trim and press it down. Check that the rubber protectors are positioned correctly.

90 Cars where the left-hand rear side trim and rear seat have been removed: Fit the screws which hold the side trim, fold the inner lip on the door opening seal over the front edge of the side trim and lift the bracket on the soft top cover seal over the side trim.

91 Cars where the left-hand rear side trim and rear seat have been removed: Fit the speaker grille and fit the bass speakers or the covers.



92 Cars where the left-hand rear side trim and/or rear seat have been removed: Guide the seat belts in through the belt guide and fit the guides in the backrest cushion by pressing them in.

93 Cars where the left-hand rear side trim and/or rear seat have been removed: Guide in the backrest cushion from above and press it down firmly.

94 Cars where the left-hand rear side trim and/or rear seat have been removed: Fit the two screws for the backrest cushion upper mounting.

95 Cars where the left-hand rear side trim and/or rear seat have been removed: Fit the screws for the seat belts' lower mounting.

Tightening torque 45 Nm (33lbf ft)

96 Cars where the left-hand rear side trim and/or rear seat have been removed: Fit the rear head restraints in the sleeves.

97 Cars where the left-hand rear side trim and/or rear seat have been removed: Position the seat cushion and fit the screws in the front edge of the seat cushion.

98 Cars where the left-hand rear side trim and/or rear seat have been removed: Raise the soft top completely.

- 99 Connect the battery negative cable if not already done and fit the battery cover.
- 100 Synchronise remote control code by inserting the key into the ignition.

Important

Repeat this procedure with all keys. Otherwise, the remote controls will not function.

- 101 Adjust the time and date.
- 102 Activate window lift pinch protection function by operating the side windows up and down twice. An audible confirmation will sound when activation is complete.
- 103 **Cars where the left-hand front seat is electrically adjustable:** Reset the position of the seat if it has been changed.
- 104 Connect the diagnostic tool, carry out an SPS-programming of the control module, ICM (to latest software), then select "Add/Remove", select ICM and select "Add".

Note

The diagnostic tool will on some occasions need to retrieve a security code in TIS. Information on what to do will be displayed on the diagnostic tool display.

- 105 Connect the diagnostic tool, select car and model year, select "All", select "Add/Remove", select the accessory and select "Add".

Note

The diagnostic tool will on some occasions need to retrieve a security code in TIS. Information on what to do will be displayed on the diagnostic tool display.