



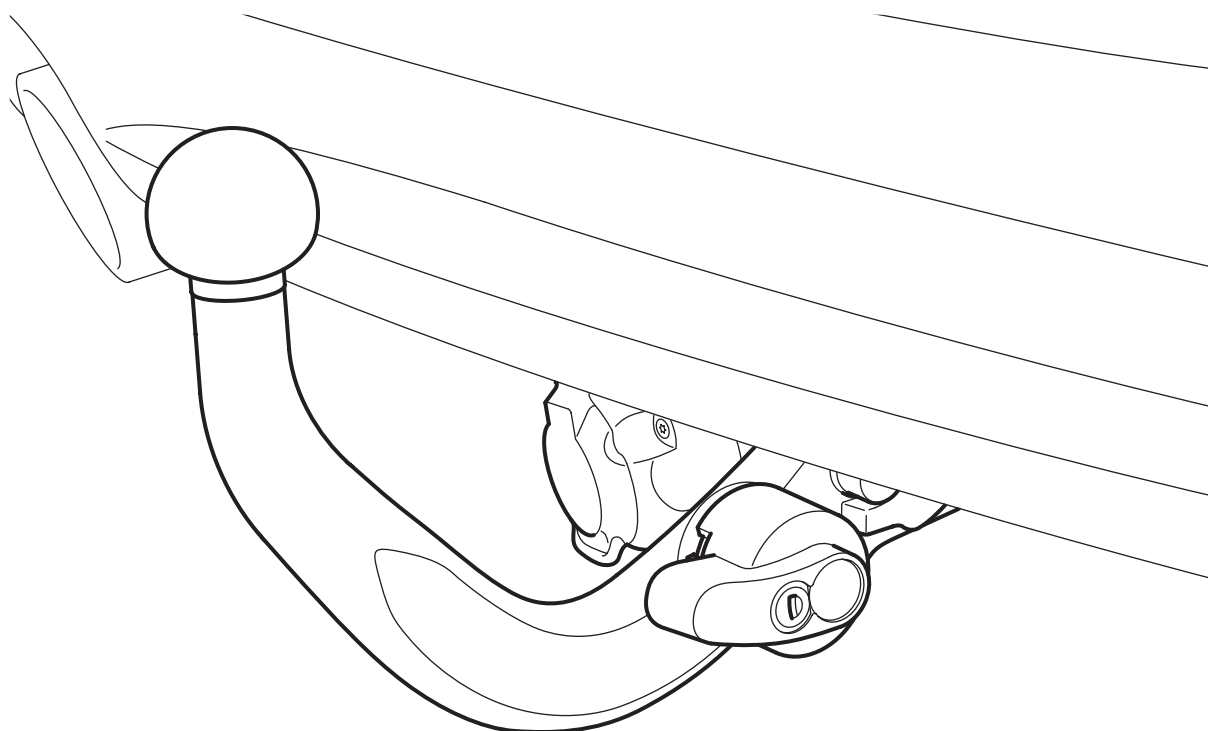
**MONTERINGSANVISNING · INSTALLATION INSTRUCTIONS
MONTAGEANLEITUNG · INSTRUCTIONS DE MONTAGE**

Saab 9-3 5D M08- XWD

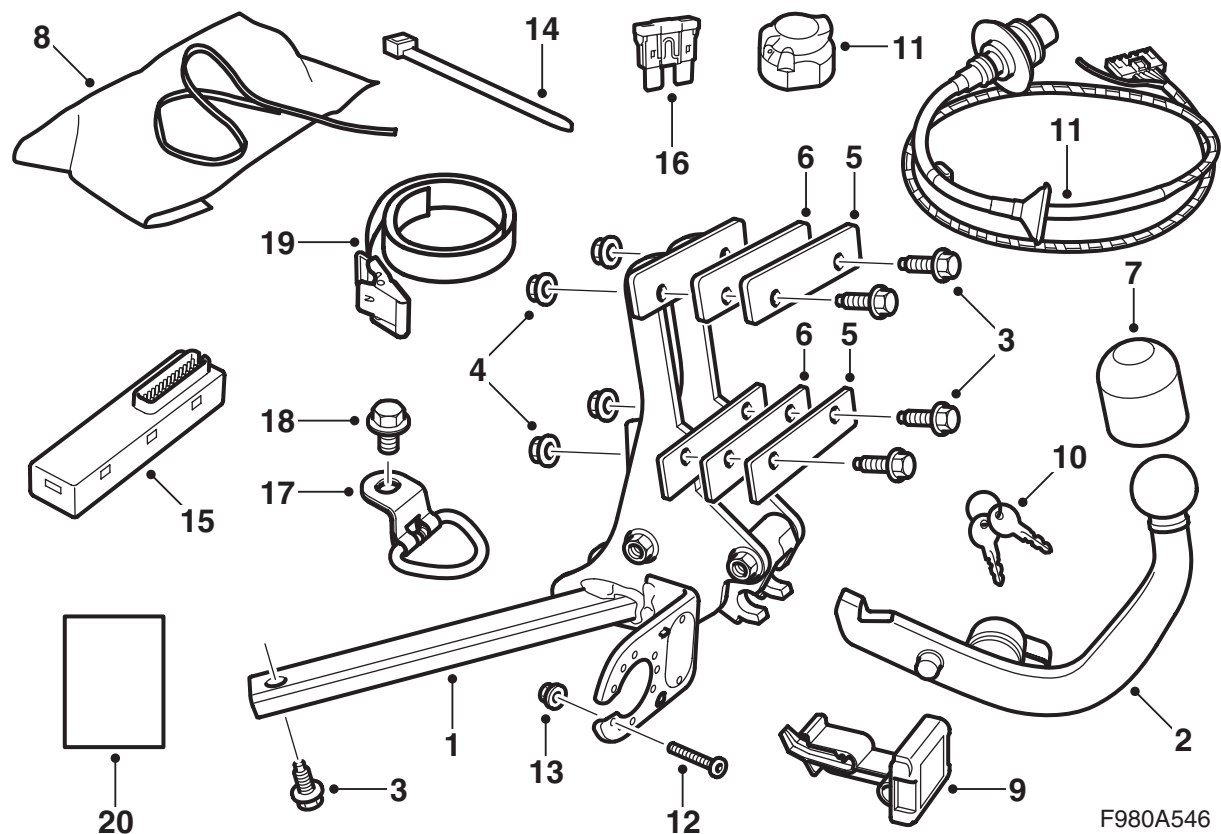
(EC 94/20, e11 00-7394)

Towbar, removable

Accessories Part No.	Group	Date	Instruction Part No.	Replaces
13 316 663	9:86-06	Mar 09	13 316 678	



F980A545



F980A546

- 1 Body bracket
- 2 Ball unit
- 3 Flange screw (x6) M10x40 class 100 (10.9)
- 4 Flange nut (x4) M10 class 8
- 5 Reinforcement plate (x2) 5 mm
- 6 Zinc plate (x2) 1 mm
- 7 Ball guard
- 8 Storage bag
- 9 Cover
- 10 Key (x2)
- 11 Wiring harness (13-pin)
- 12 Screw (x3)
- 13 Nut (x3)
- 14 Cable tie (x4)
- 15 Electronic module
- 16 Fuse
- 17 Load securing eyelet
- 18 Screw
- 19 Belt
- 20 Handling label

Note

Always check national legislation and regulations regarding mounting a towing bracket. Ensure that all requirements are complied with.

13 316 663 (Saab part number 13 316 660)

The towing bracket fulfils the requirements of 94/20/EEC.

Maximum permitted trailer weight:

Braked trailer:

1600 kg (3500 lbs.) (EC 94/20, e11 00-7394)

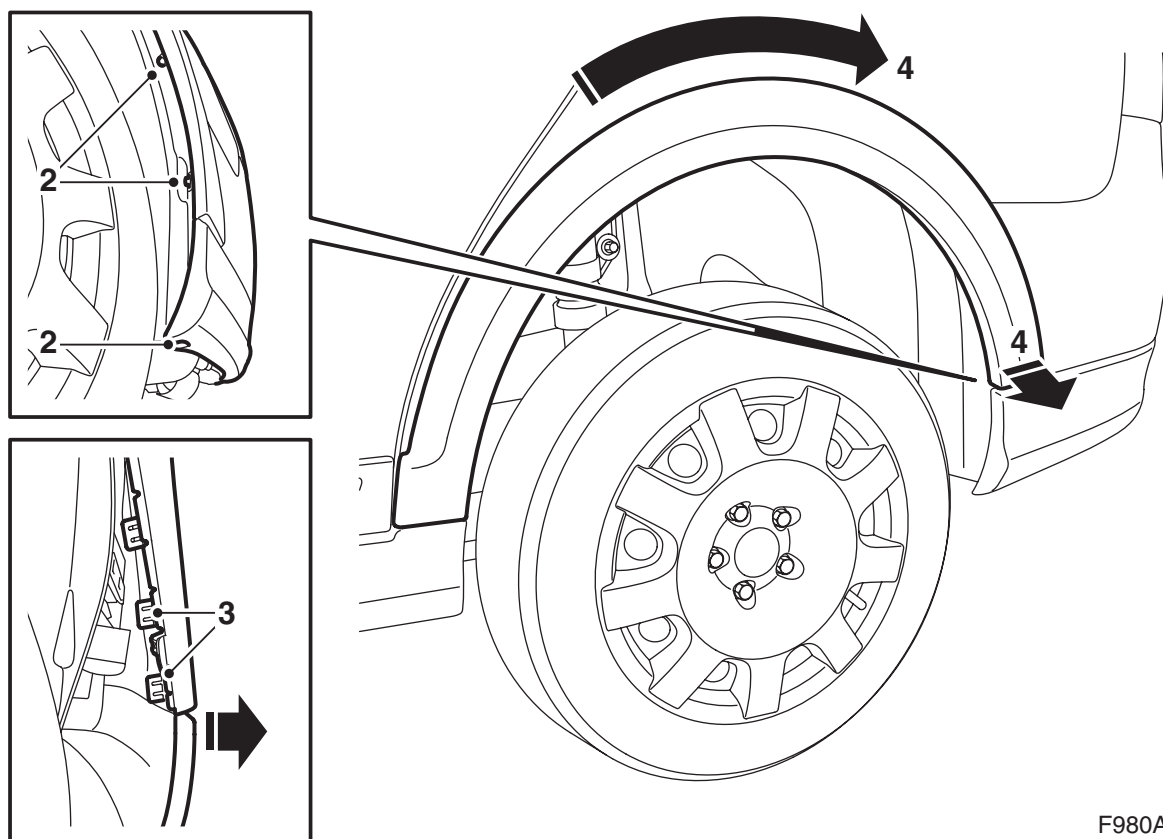
Trailer without brakes: 50% of the towing vehicle's weight (vehicle in running order), but no more than 750 kg (1650 lbs).

Max. permissible towball pressure: 75 kg

Maximum D-value: 9.5 kN

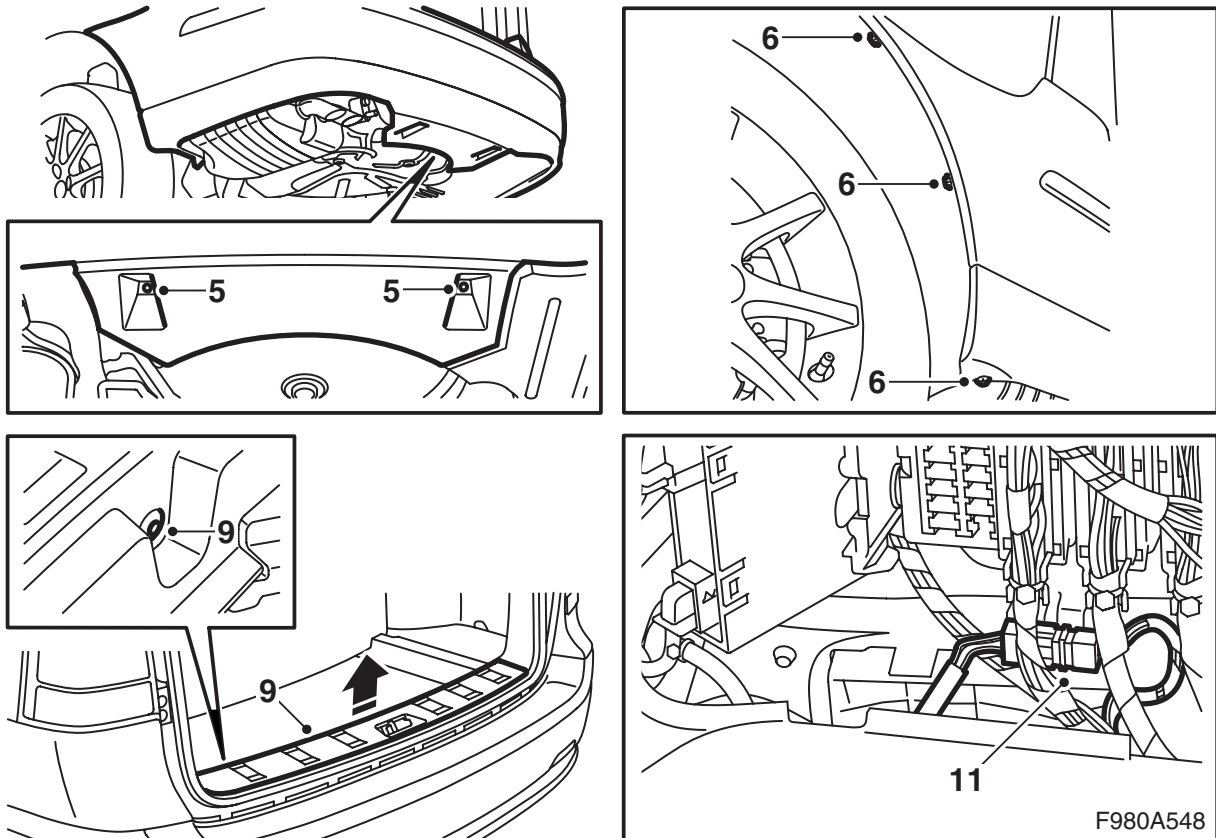
Important

The car must be inspected after the towing bracket is mounted. Show these instructions at the inspection.



F980A547

- 1 Raise the car.
- 2 **9-3X:** Remove the screws.
- 3 **9-3X:** Press in the catches on the two rear clips and fold out the mudguard moulding.
- 4 **9-3X:** Turn the mudguard moulding clockwise and then remove it.

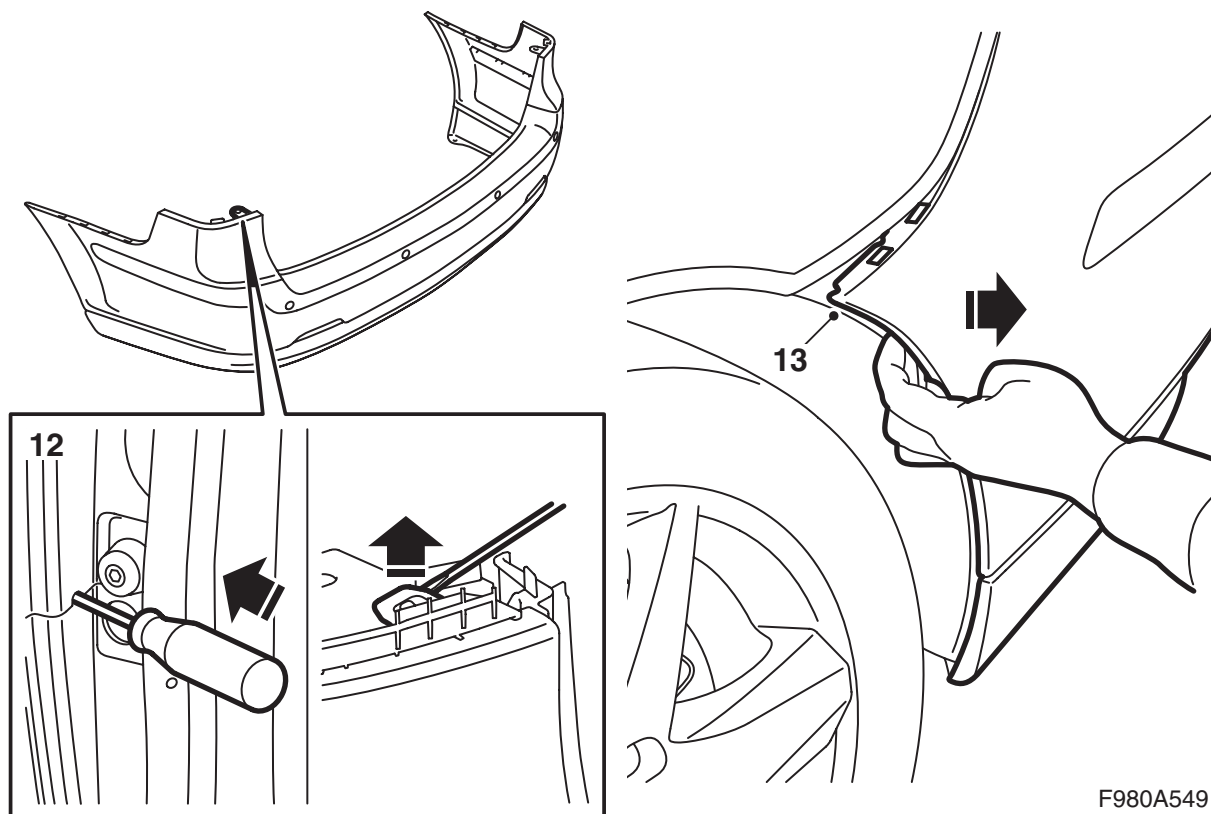


- 5 Remove the spoiler's centre nuts.
- 6 Remove the screws to the wheel housing.
- 7 Lower the car and open the boot lid.
- 8 Fold up the floor.
- 9 Remove the luggage compartment scuff plate.

Important

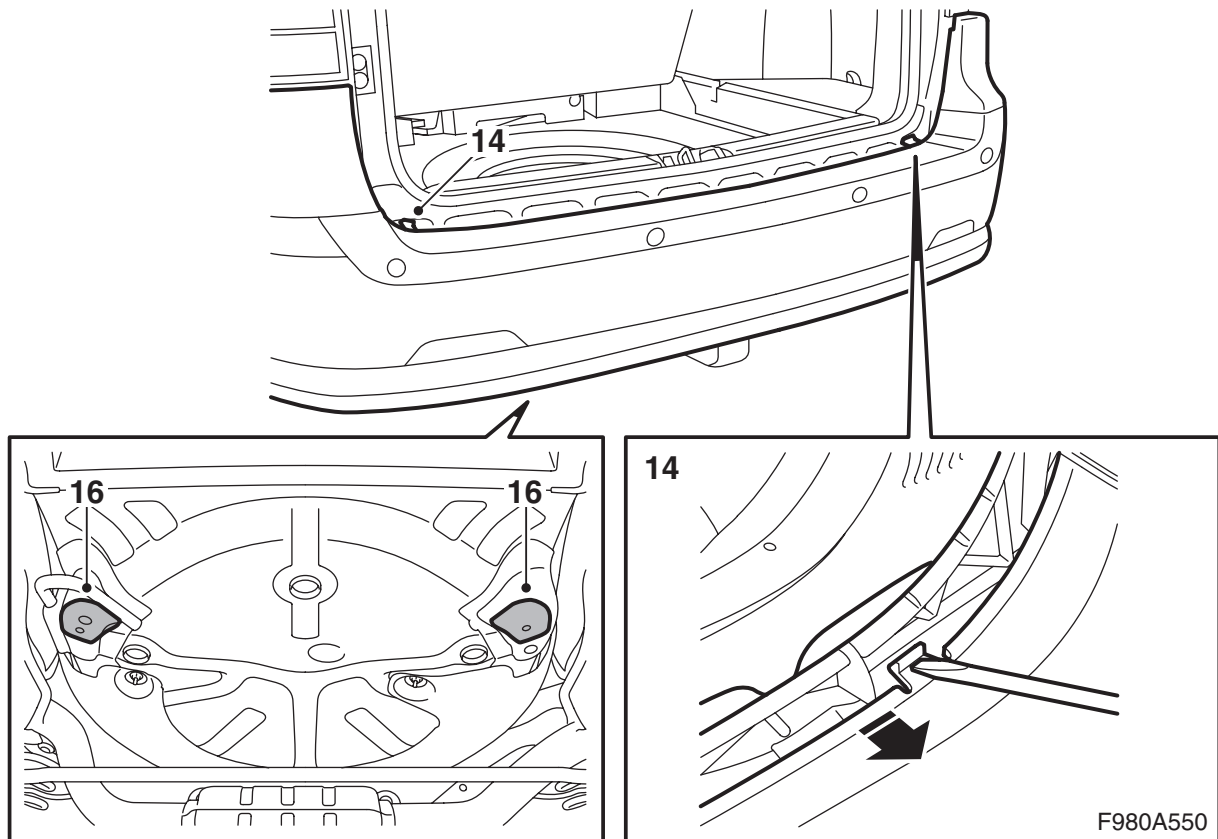
The scuff plate is fitted with two clips.

- 10 Remove the hatch in the left-hand luggage compartment side trim.
- 11 **Cars with SPA:** Unplug the connector.

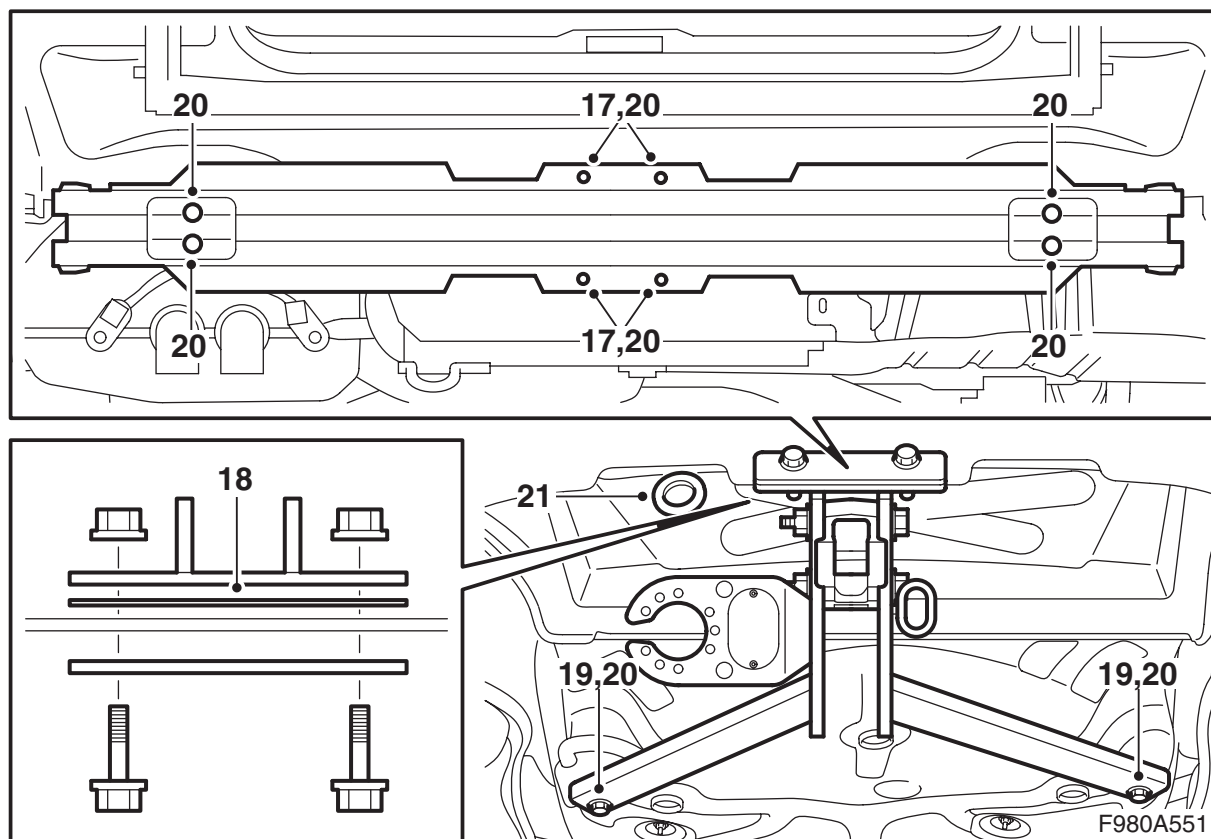


F980A549

- 12 Insert a screwdriver in the hole to reach under the catch. Bend carefully using the screwdriver to release the catch.
- 13 Pull the bumper shell away from the holders.



- 14 Release the catches using a screwdriver. Detach the shell from the moulding.
- 15 Lift off the bumper shell.
Cars with SPA: Pull out the wiring harness.
- 16 Scrape carefully to remove the underseal within the marked area, where the towbar is in contact with the body.



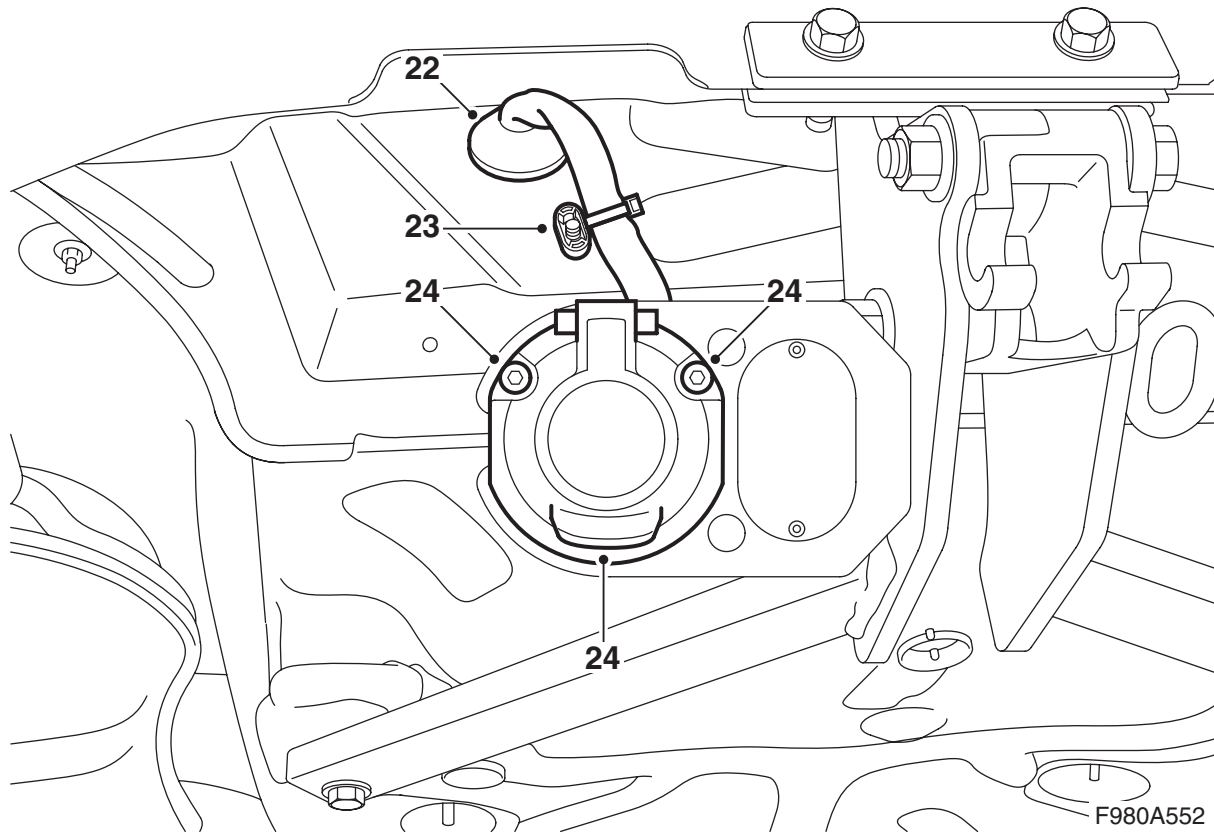
- 17 Secure the towbar with bolts and nuts together with the reinforcements in the four holes which are in the bumper member and raise the car.
- 18 The zinc washers should be located between the towbar and the bumper member.
- 19 Raise the car and attach the towbar in the floor under the spare wheel well.
- 20 Tighten the bumper member mountings against the body and the bolts and nuts holding the towing bracket against the bumper member and floor.

Tightening torque, bumper member to body
50 Nm (37 lbf ft)

Tightening torque, towing bracket to bumper member
80 Nm (59 lbf ft)

Tightening torque, towing bracket to floor
80 Nm (59 lbf ft)

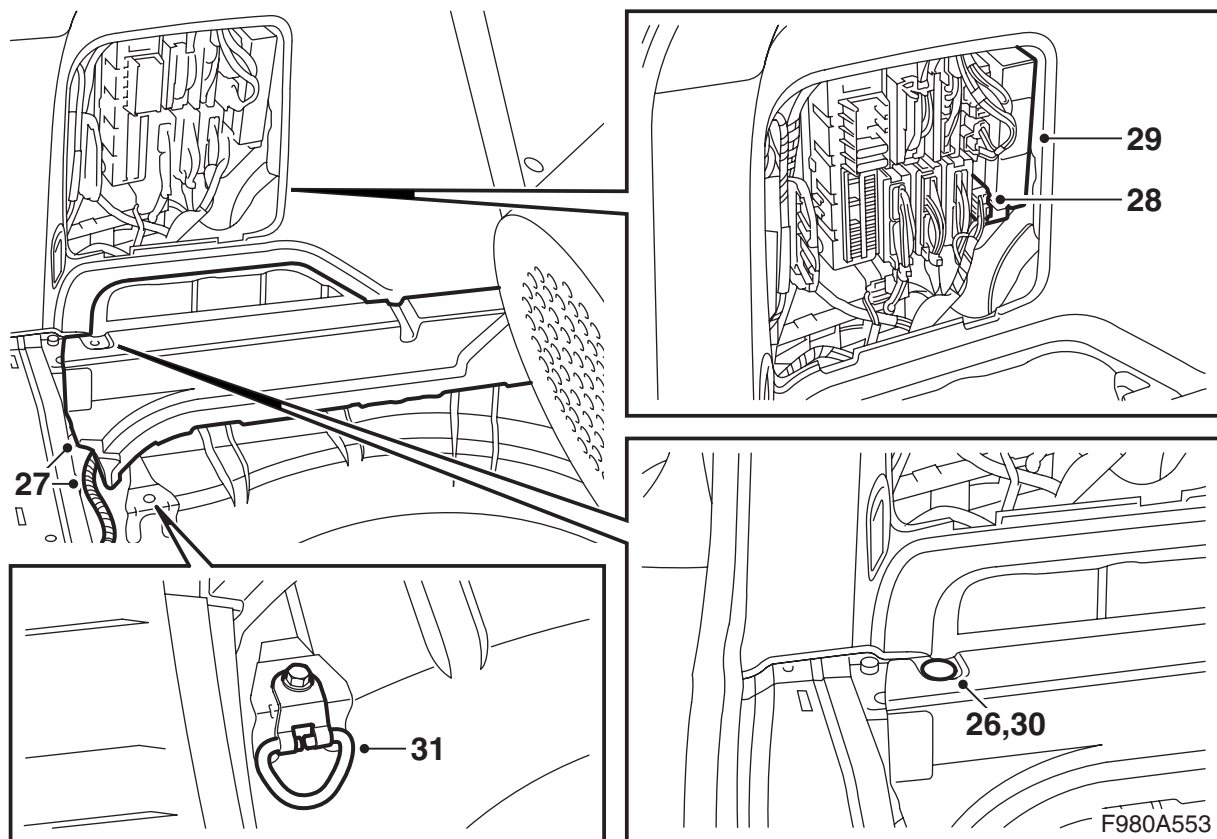
- 21 Remove the rubber plug.



- 22 Insert the wiring harness through the hole in the body.
- 23 Fasten the wiring harness to the right-hand weld screw on the left-hand side of the towbar.
- 24 Fit the 13-pin connector to the connector holder plate. The cover should open upward.

Important

The seal between the connector and the connector holder plate must be correctly mounted and should not be folded in anywhere.



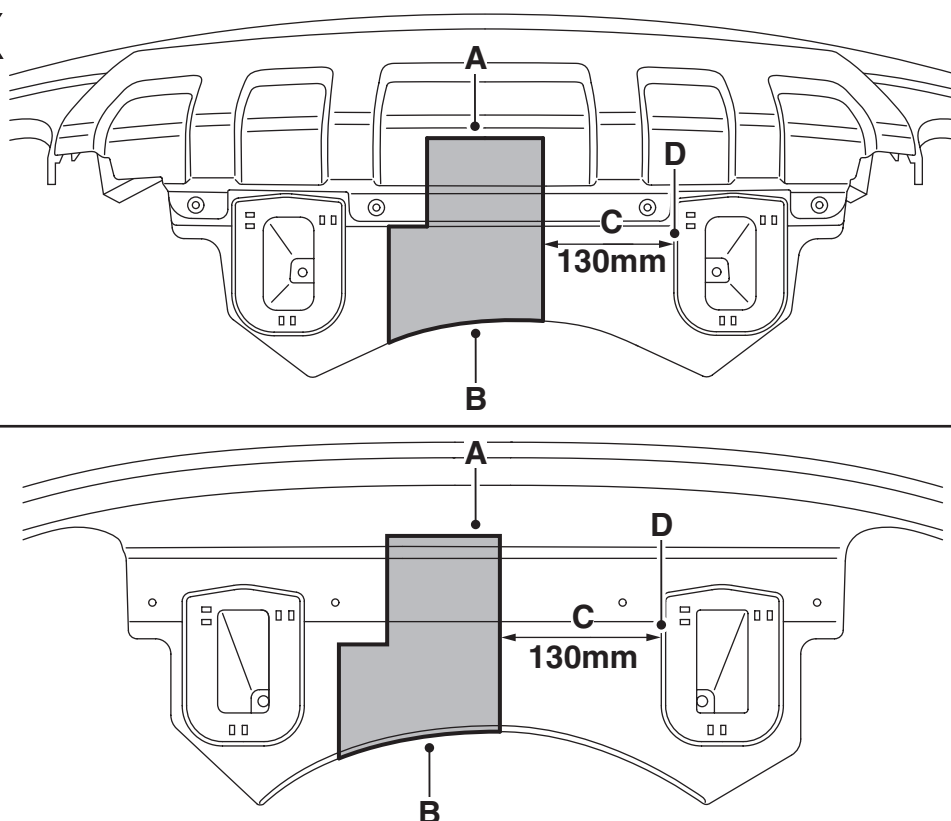
- 25 Lower the car.
- 26 Remove the clip holding the foam plastic block on the left-hand side.
- 27 Carefully lift up the foam plastic block and guide the wiring harness underneath it.
- 28 Plug the wiring harness connector into the REC and secure the wiring harness with four cable ties.

Important

The blue/white (BU/WH) cable which is not connected in the connector must not be used, but must be secured together with the wiring harness in the nearest cable tie.

- 29 Fit the kit's electronic module in the REC and fit the fuse in position 8 in the REC.
- 30 Fit the clip for the foam plastic block.
- 31 Fit the load securing eyelet.

9-3X



F980A554

32 Print and cut out the template.

Important

Check that the size of the template corresponds with the measurements after printing.

Create your own template if it is not possible to get the printout to correspond with the measurements.

33 Place the template (A) on the outside of the bumper shell against the edge (B) and 130 mm (C) from the edge (D) of the right-hand bracket and draw around the template.

34 Saw from the outside of the bumper shell in accordance with the marking

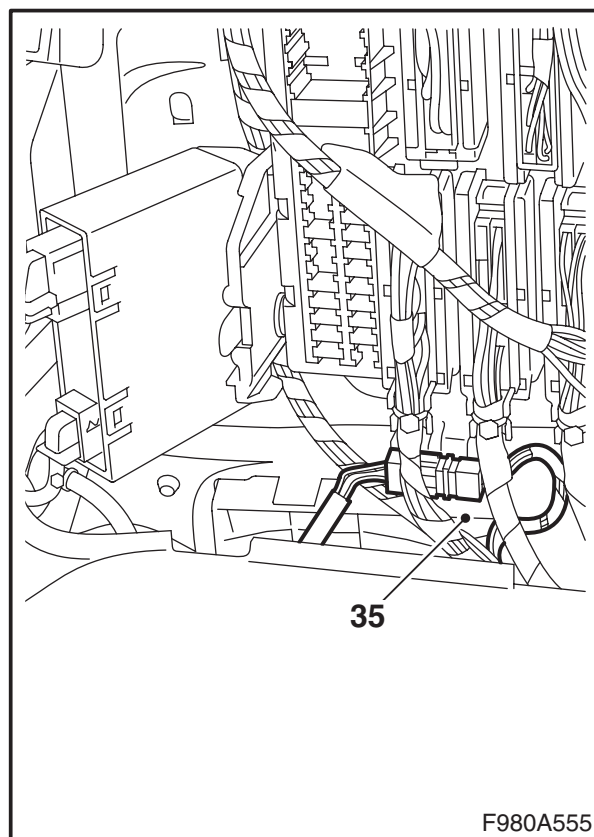
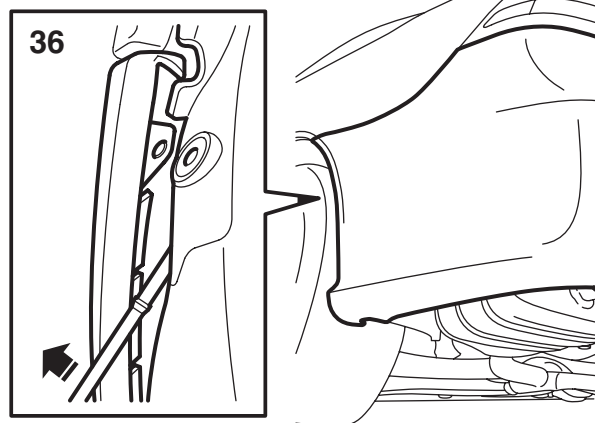


WARNING

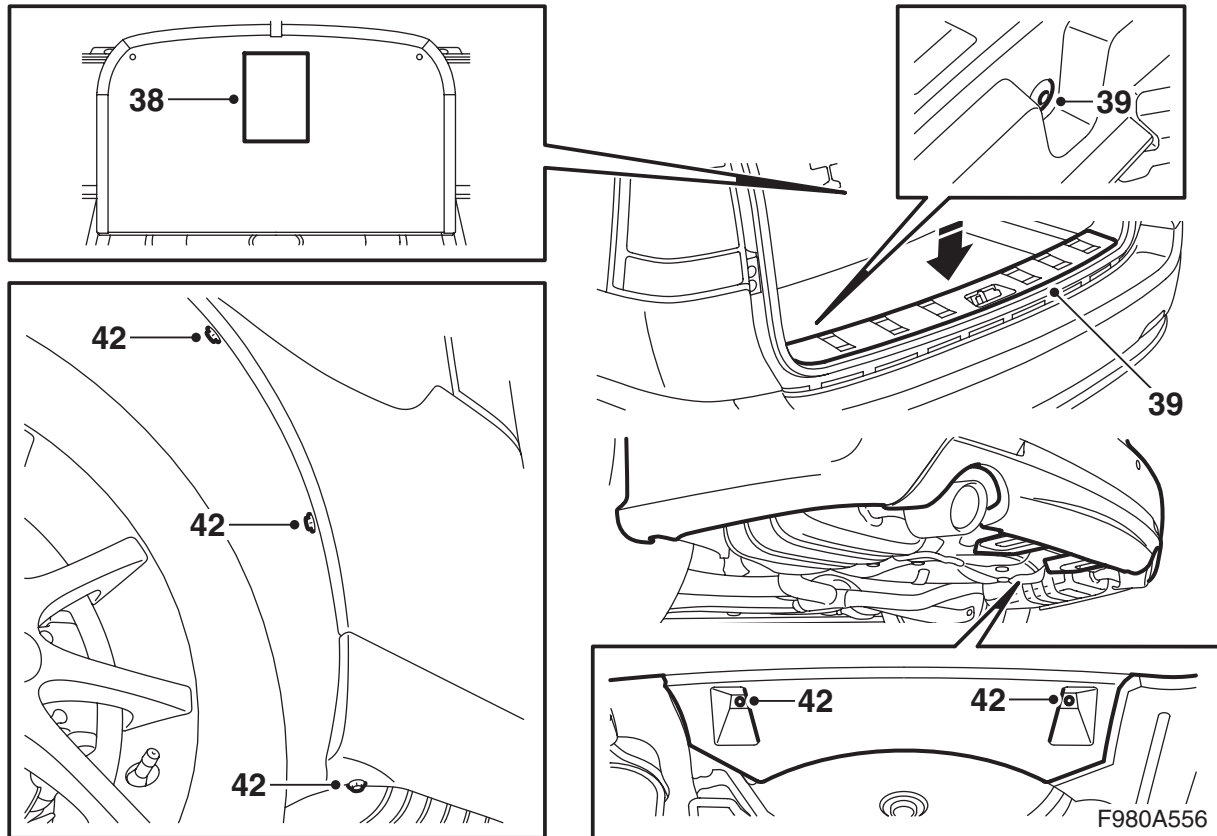
Use of a saw and knife entails a risk of injury. Exercise caution when cutting. Check that the bumper shell is stably positioned before beginning to cut. Use personal protection equipment, such as protective gloves, safety goggles and hearing protection.

Note

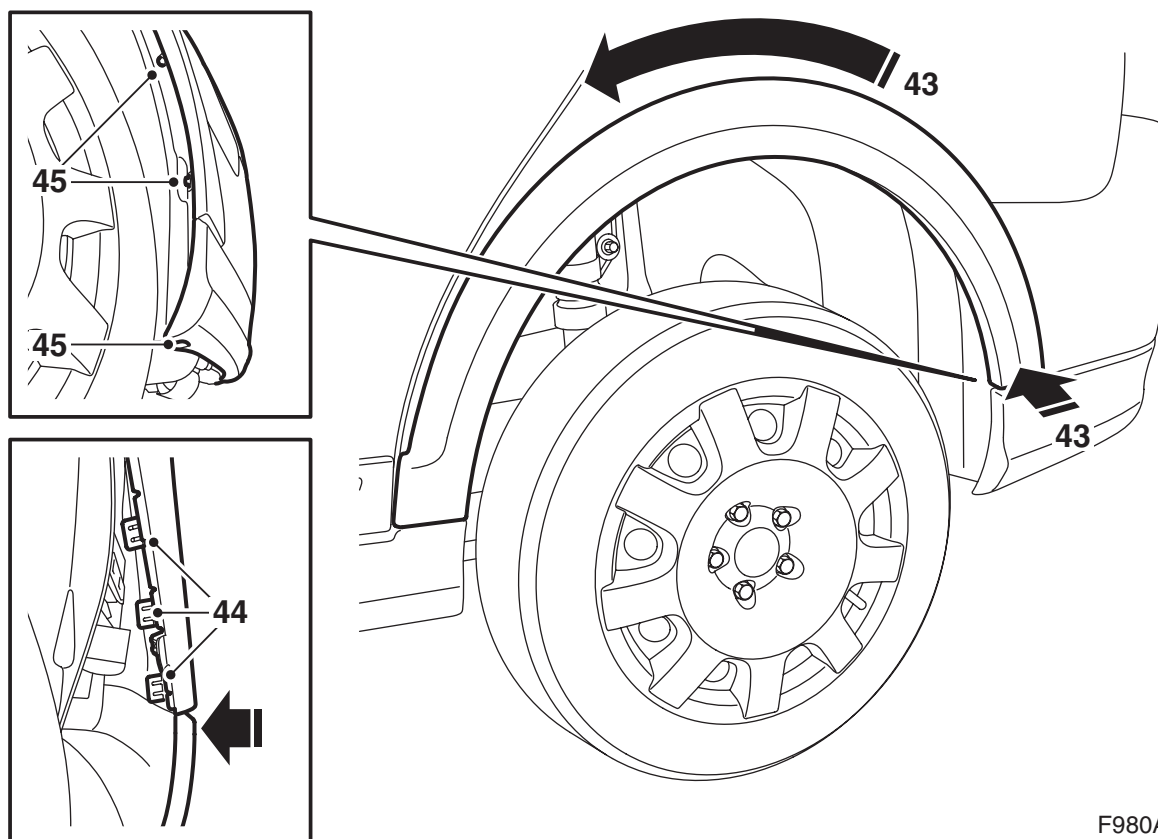
Adapt the cut-out to the towbar after installation if necessary. Check that there is a small amount of play between the towbar and bumper.



- 35 **SPA:** Insert and plug in the connector.
- 36 Fit in the two tabs of the bumper shell under the holders and the outer corners between the wheel arch liner and the mounting points at the wheel arches. Press the bumper shell into place.
- 37 Fit the floor section on the left-hand side.

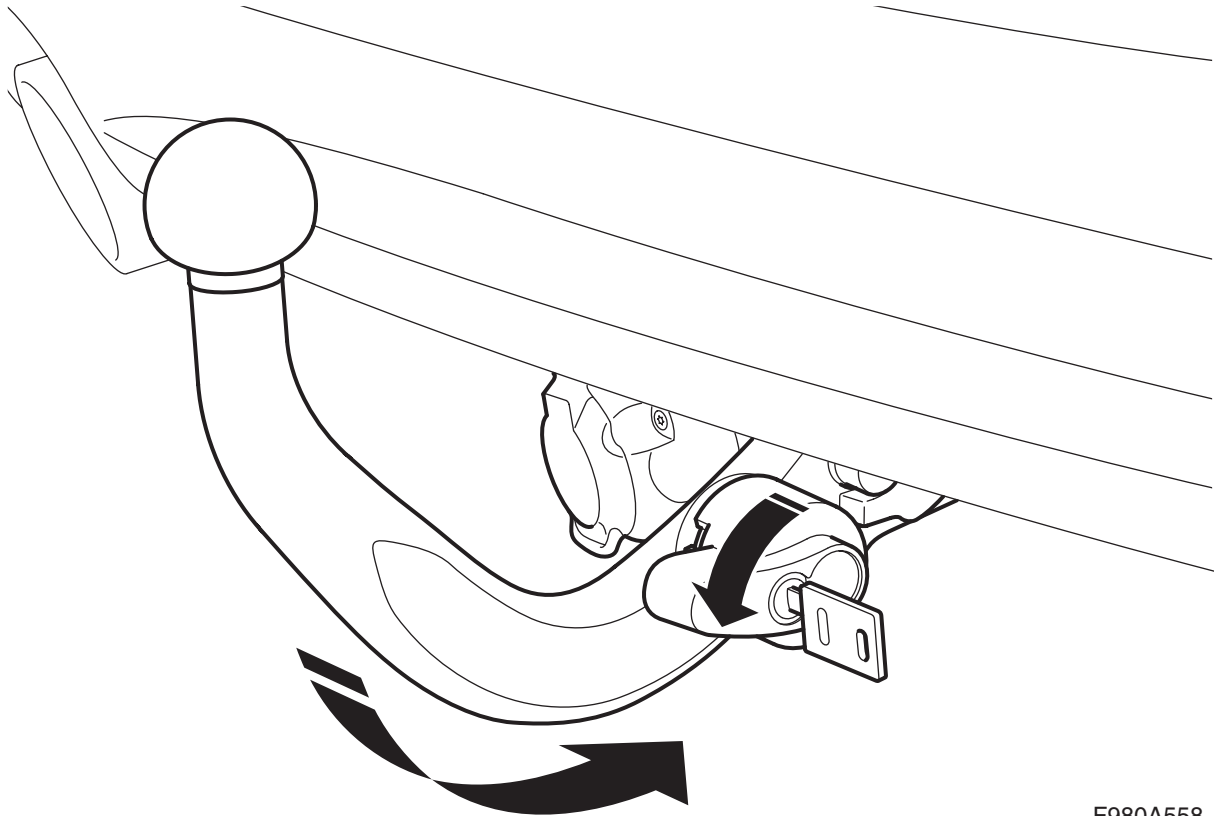


- 38 Fit the handling label and fold down the floor.
- 39 Fit the scuff plate.
- 40 Fit the hatch in the side trim.
- 41 Raise the car.
- 42 Fit the two nuts holding the rear bumper air shield to the body and fit the screws holding the bumper shell to the wheel housings.



F980A557

- 43 **9-3X**: Fit the mudguard moulding adjacent to the brackets and turn anticlockwise.
- 44 **9-3X**: Press in the rear clips.
- 45 **9-3X**: Fit the screws.



F980A558

- 46 Fit the ball unit to the body bracket. Lock and remove the key.

⚠ WARNING

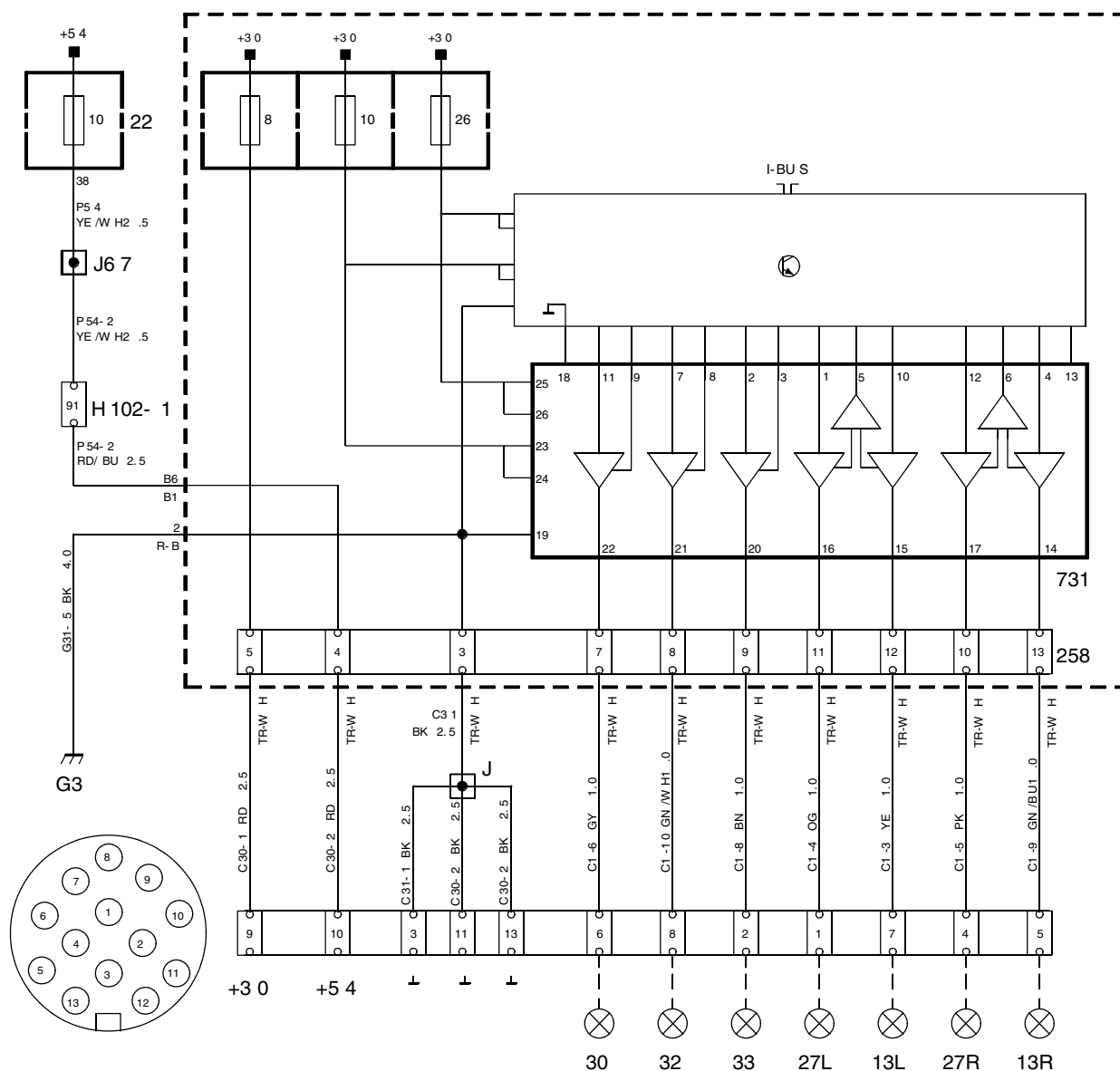
Green should be the only colour shown in the socket at the knob.

Tug on the ball unit to make sure it is properly secured.

- 47 Lower the car and check the bumper alignment. Adjust if necessary.
- 48 Carefully remove the user instruction page and give it to the customer together with the installation instructions.

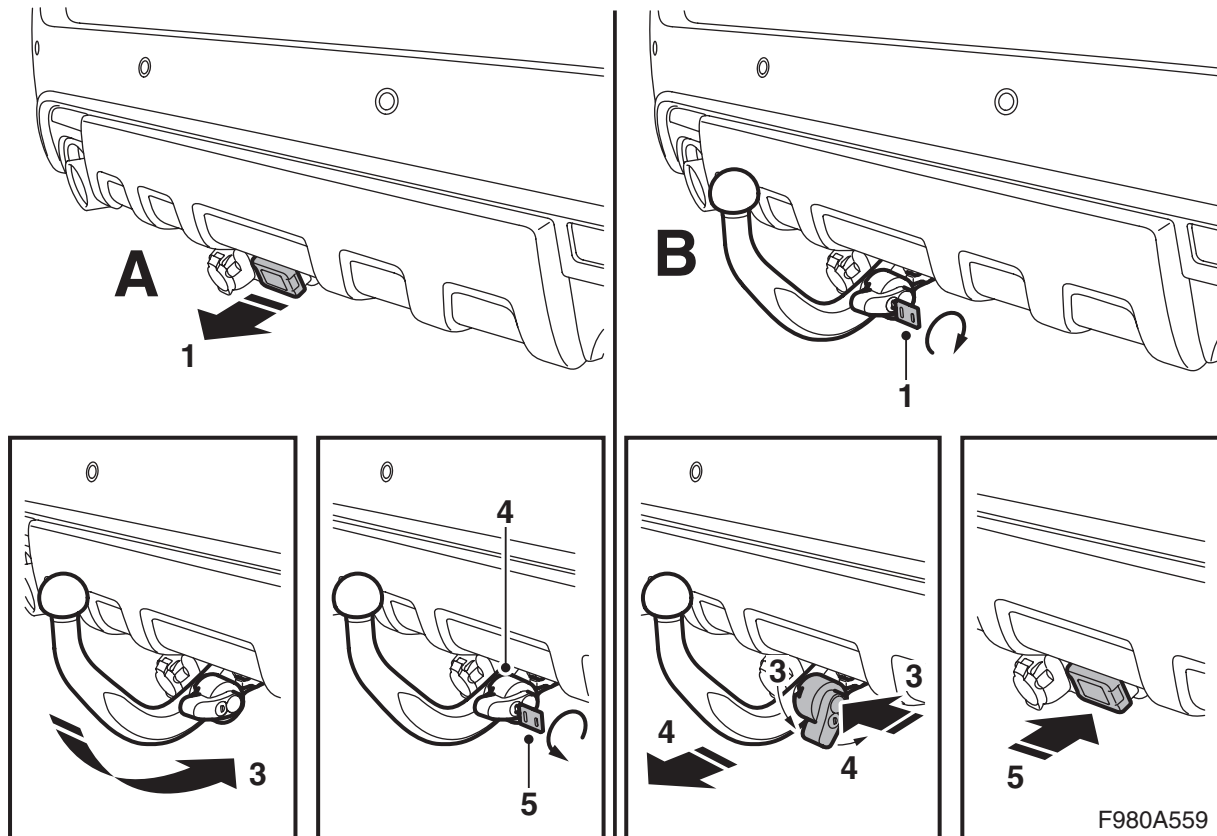
Wiring diagram

701

F3L12
021212

List of components

No.	Name position
Components	
13	Lamp, parking light, trailer
22	Main dashboard fuse box, on the short side of the instrument panel near the left-hand door
27	Lamp, direction indicators, trailer
30	Lamp, brake lights, trailer
32	Lamp, reversing lights, trailer
33	Lamp, rear fog lights, trailer
258	Connector, towbar wiring harness, in the luggage compartment electrical distri- bution box
701	Luggage compartment electrical distribution box, on the wall behind the left rear wheel hous- ing
731	Trailer control module, in the luggage compartment electrical distri- bution box
102-pin connector	
H102-1	Lower left-hand A-pillar
Crimp connections	
J	Approx. 160 mm from the 13-pin connector
J67	LHD: Approx. 150 mm from branching point front left floor lighting towards connector H102-1 RHD: Approx. 50 mm from branching point grounding point G40 towards grounding point G41
Grounding points	
G3	In the luggage compartment below the left- hand light cluster

**User instructions**

(keep in the car's Owners Manual)

⚠ WARNING

To ensure that the towbar is coupled **correctly and safely**:

- **Always** fit the protective cover when the towball unit is not attached.
- It must **always** be possible to detach and attach the towball unit without it jamming.

Important

If the trailer is equipped with extra electrical equipment in addition to normal outer lighting (e.g. inner lighting or fan) and connected to the car via the trailer's connector, the trailer must be equipped with a 13-pin connector (installed according to ISO 11446) in order to allow for a separate power supply.

Important

Cars with SPA: The SPA system will compensate for the towbar in measuring the distance behind the car irrespective of whether the ball unit is fitted.

A. Fitting the ball unit

- 1 Remove the protective plug.
- 2 Fit the ball unit into the bracket.
- 3 Press the ball unit forwards and downwards so that the knob is automatically turned anticlockwise and a loud "click" can be heard.
- 4 Check that the only colour visible in the knob is green.
- 5 Align the key in the lock and turn the key a half turn anticlockwise to lock the knob and remove the key.

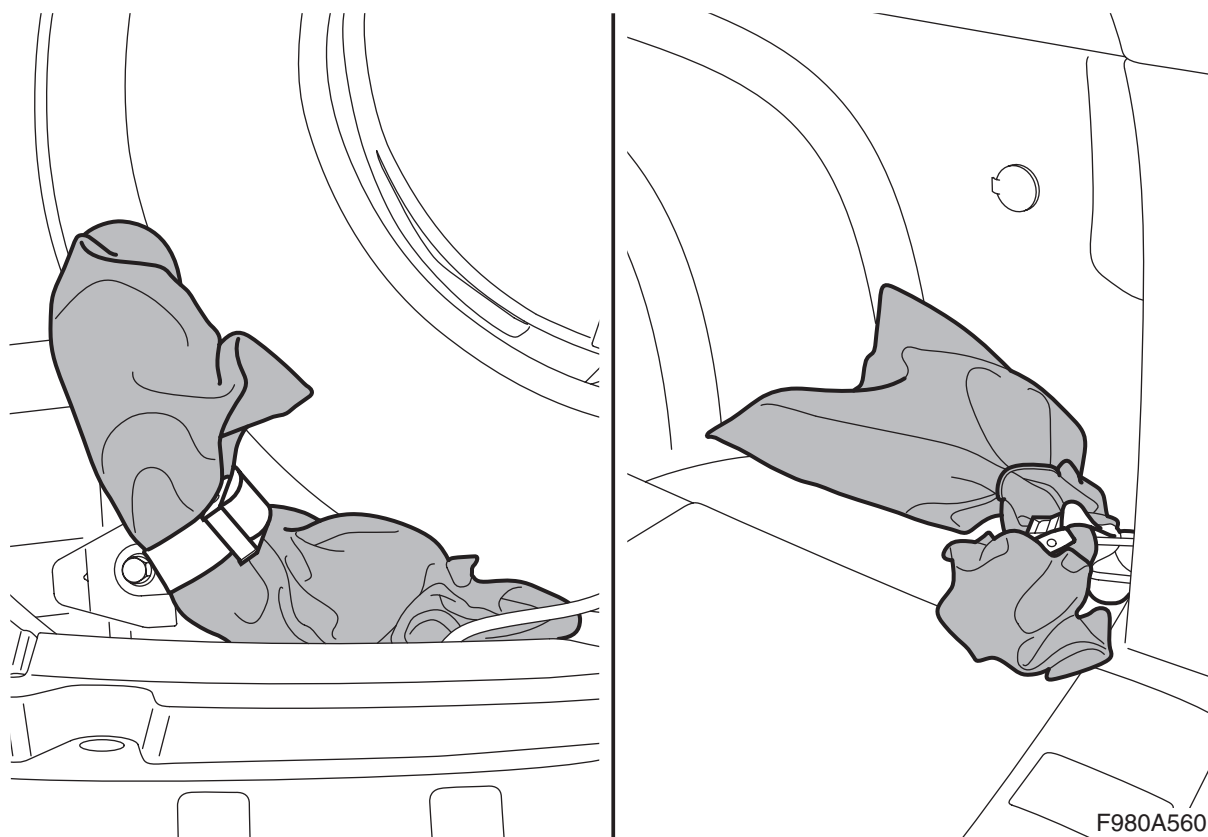
⚠ WARNING

Green should be the only colour shown in the socket at the knob.

Tug on the ball unit to make sure it is properly secured.

B. Removing the ball unit

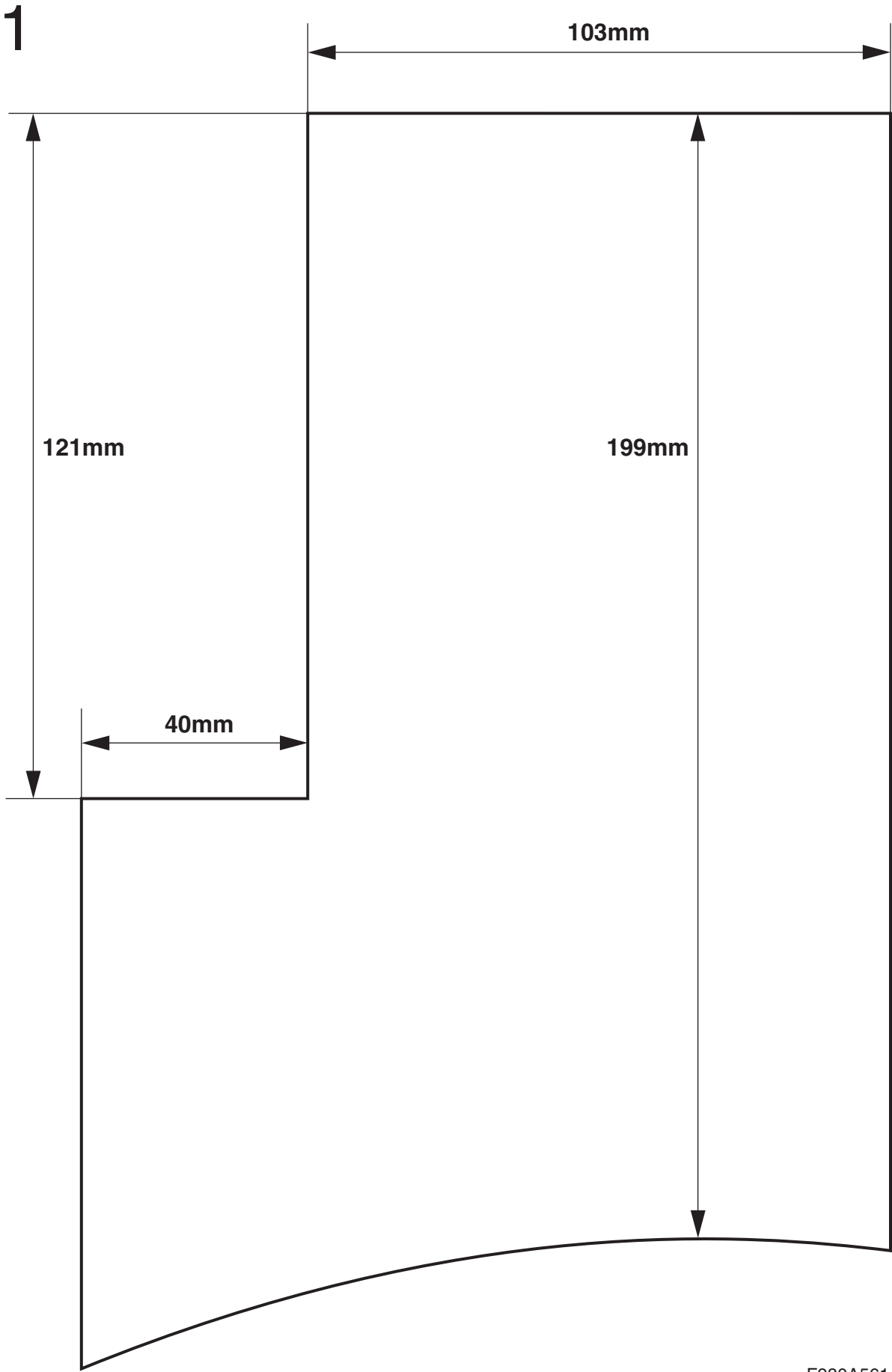
- 1 Align the key in the lock and turn the key a half turn clockwise to unlock the knob.
- 2 Remove the key.
- 3 Press in the knob, hold it depressed and turn it clockwise until a click sound is heard.
- 4 Continue to turn anticlockwise and at the same time pull out the ball unit backwards and upwards.
- 5 Fit the protective plug where the ball unit was previously fitted.
- 6 The removed ball unit must be stored in the spare wheel well in accordance with separate instructions.



Important

On the occasions when the ball unit is dismantled, it must be strapped into the eyelet in rear left-hand corner of the spare wheel well. If the car is equipped with large spare wheel then the ball unit must be strapped into one of the luggage compartment's load-securing eyelets.

Template



F980A561