

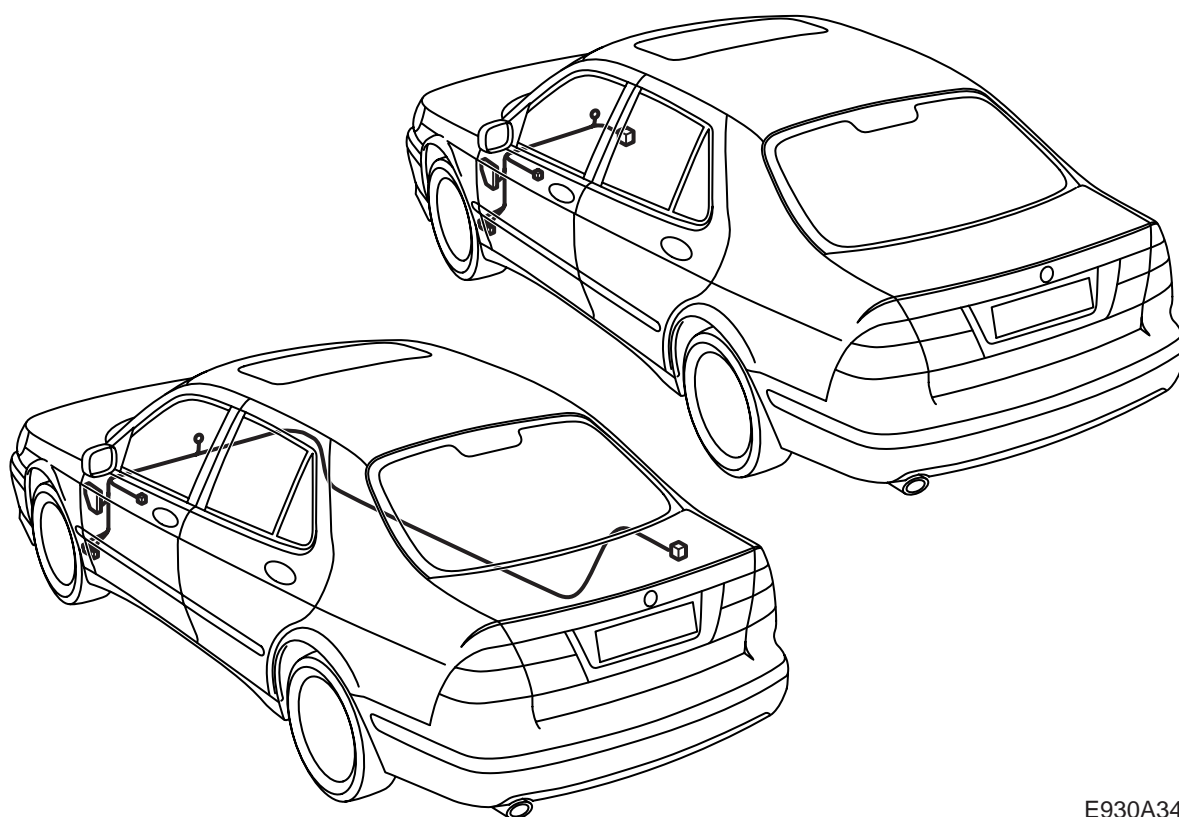


# MONTERINGSANVISNING · INSTALLATION INSTRUCTIONS MONTAGEANLEITUNG · INSTRUCTIONS DE MONTAGE

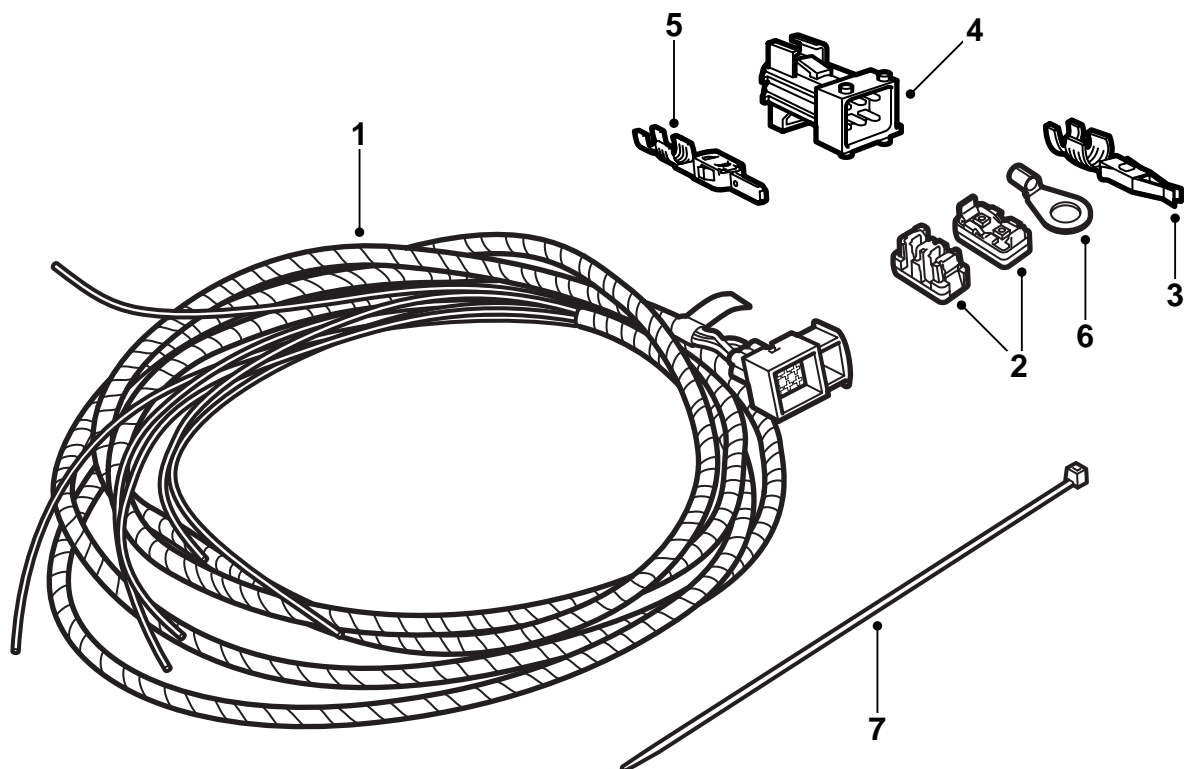
## Saab 9-5

### Wiring harness for navigation equipment

Accessories Part No.	Group	Date	Instruction Part No.	Replaces
400 133 542	9:51-04	Feb 04	55 24 137	-



E930A344



E930A345

- 1 Wiring harness
- 2 Crimp connections (x5)
- 3 Cable casing
- 4 Connector
- 5 Cable pin to connector (x6)
- 6 Cable terminal
- 7 Cable tie (x15)

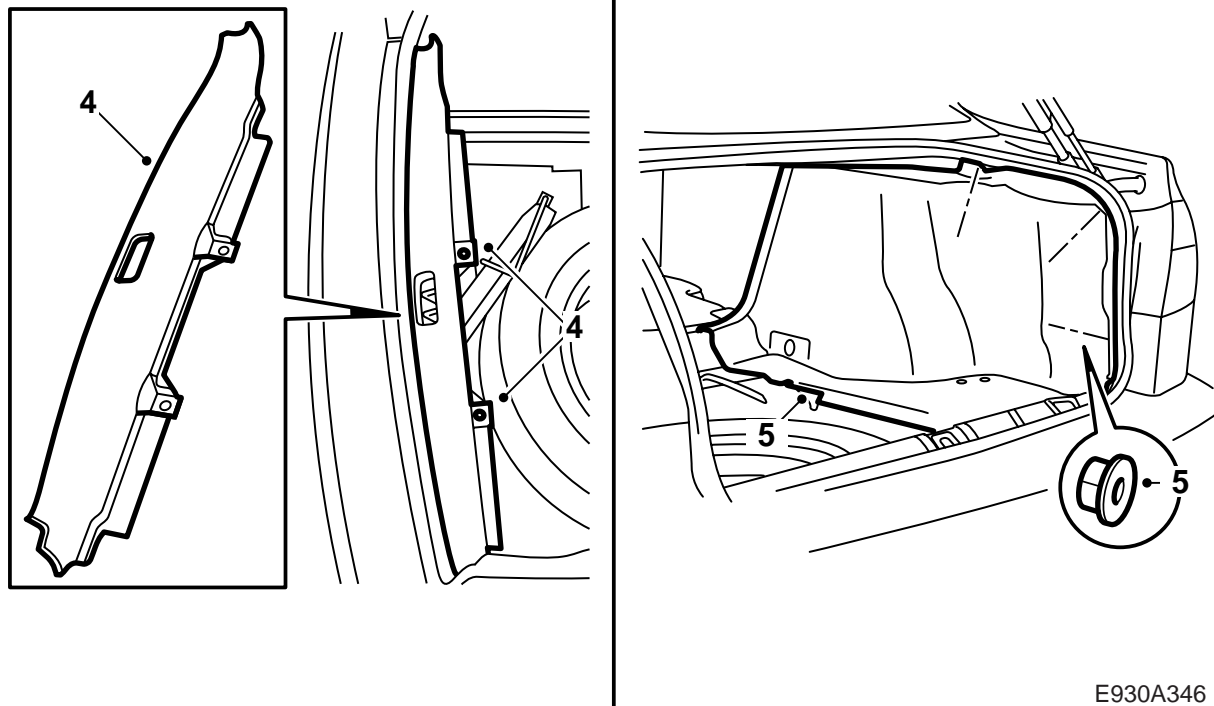
Position 4 and 5 can be used for connecting wiring harness.

The installation instructions are divided into two sections:

- installation for systems with connection at right-hand rear wheel housing, page 3
- installation for systems with connection behind the radio, page 13

### Note

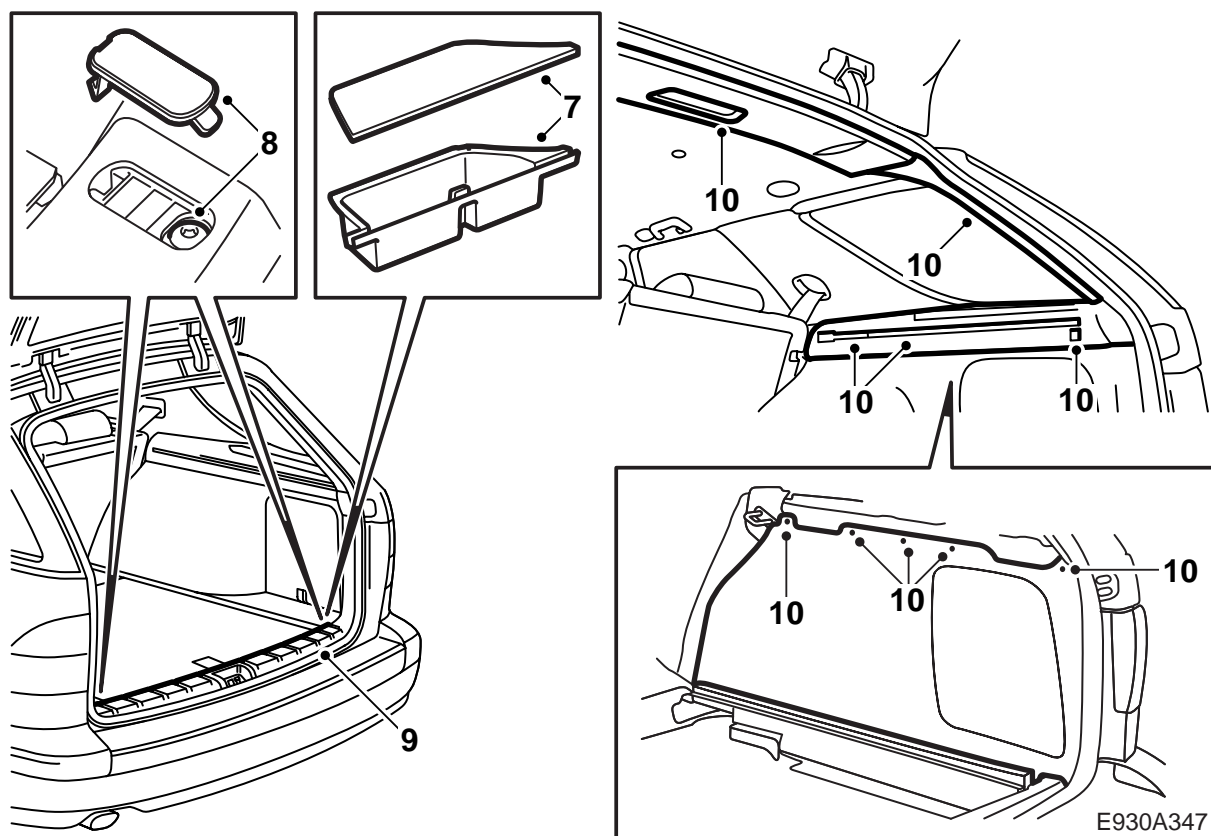
This information is available in the installation instructions for the current navigation system.



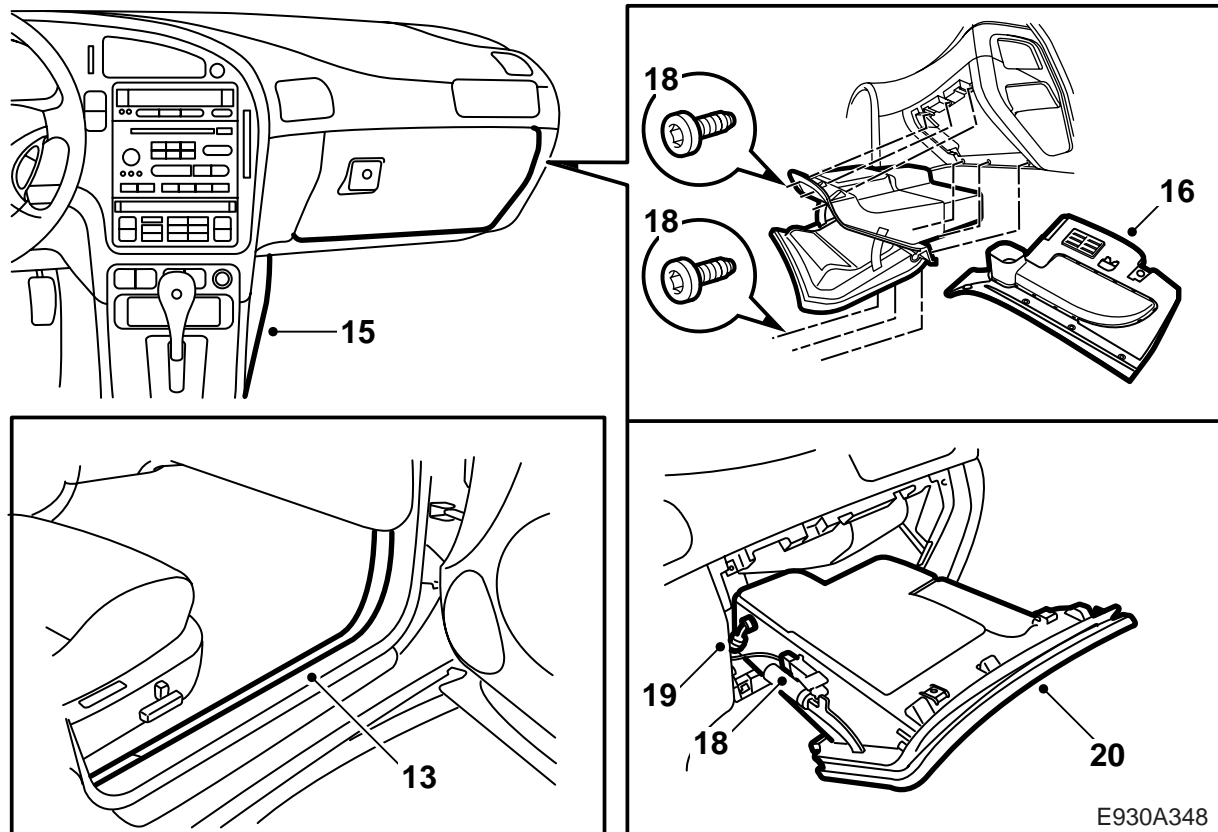
E930A346

#### Installation for systems with connection at right-hand rear wheel housing

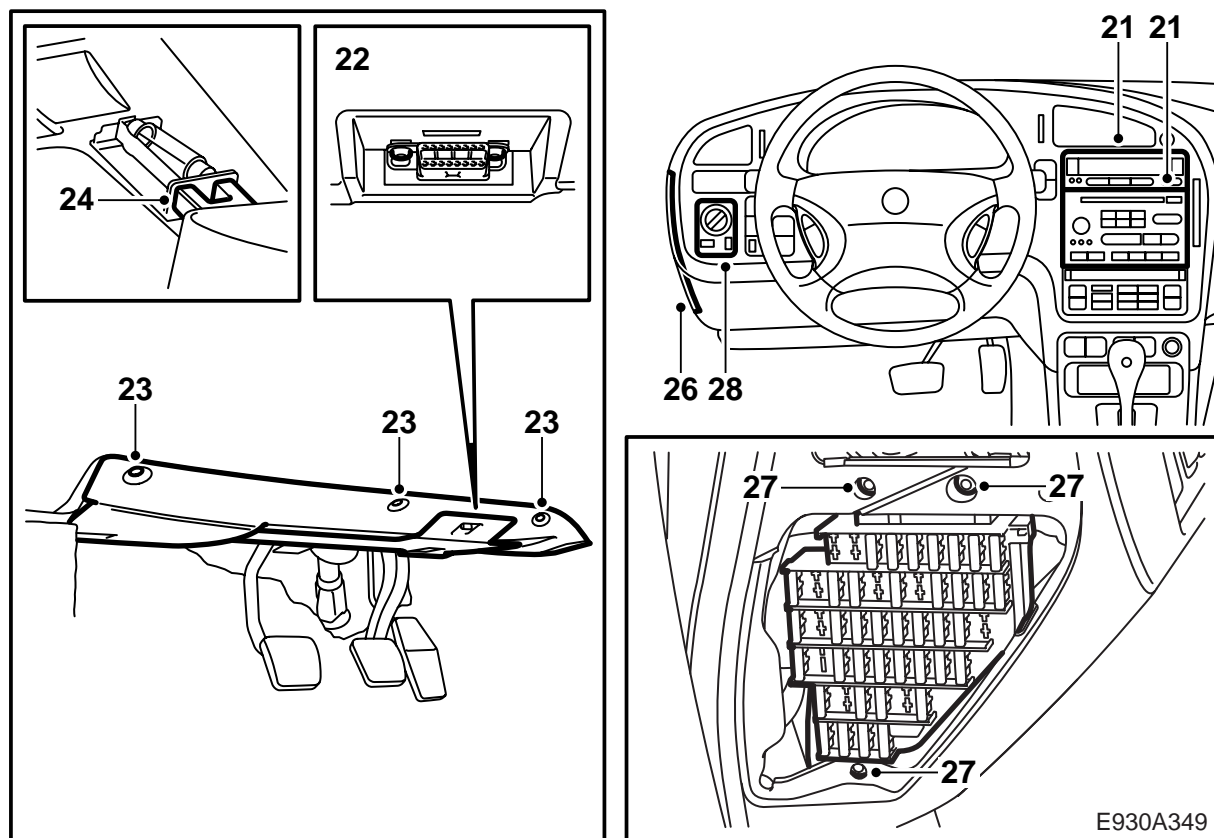
- 1 Open the tailgate/boot lid. Move the electrically adjustable seats to their rear position.
- 2 Disconnect the negative battery cable.
- 3 Remove cargo net (if fitted).
- 4 **4D:** Dismantle the luggage compartment sill scuff plate.
- 5 **4D:** Remove the luggage compartment floor and the right-hand side trim in the luggage compartment.
- 6 **4D:** Remove the sound insulation.



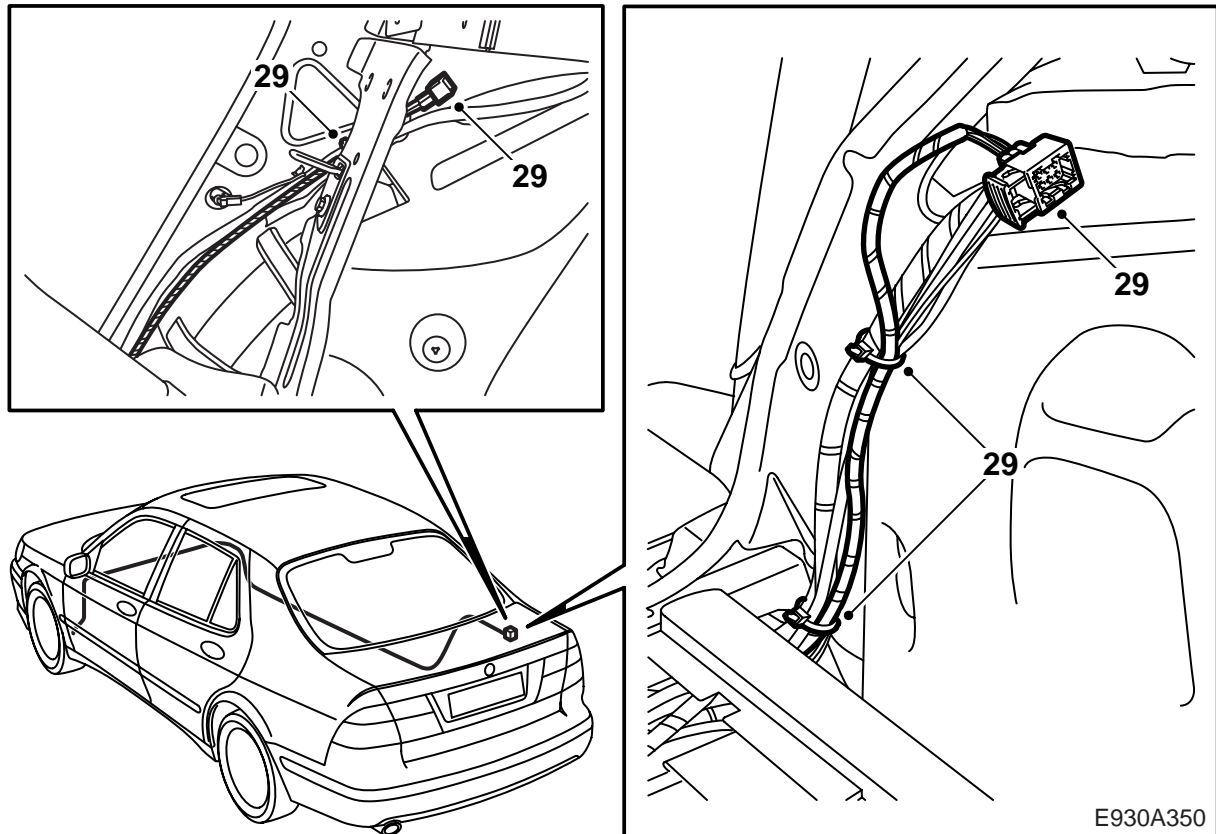
- 7 **5D:** Remove the covers on the right and left-hand sides.
- 8 **5D:** Remove the screws holding the scuff plate to the sill.
- 9 **5D:** Pull loose the scuff plate, fastened with clips.
- 10 **5D:** Remove the right-hand side trim in the luggage compartment.
- 11 **5D:** Remove the sound insulation.
- 12 **5D:** Remove the trim support pad.



- 13 Remove the scuff plates for both doors on the right-hand side of the car.
- 14 Remove the sound insulation at the B-pillar.
- 15 Remove the cover for the A/C system.
- 16 Remove the section of the dashboard below the glove box, 4 screws. There are clips along the front edge.
- 17 Detach the floor lighting connector.
- 18 Remove the 3 lower and 3 inner glove box retaining screws, pull out the glove box slightly and detach the connector for the glove box lighting.
- 19 **Cars with A/C:** Detach the cooler hose.
- 20 Remove the glove box and the air duct to the dashboard vent.



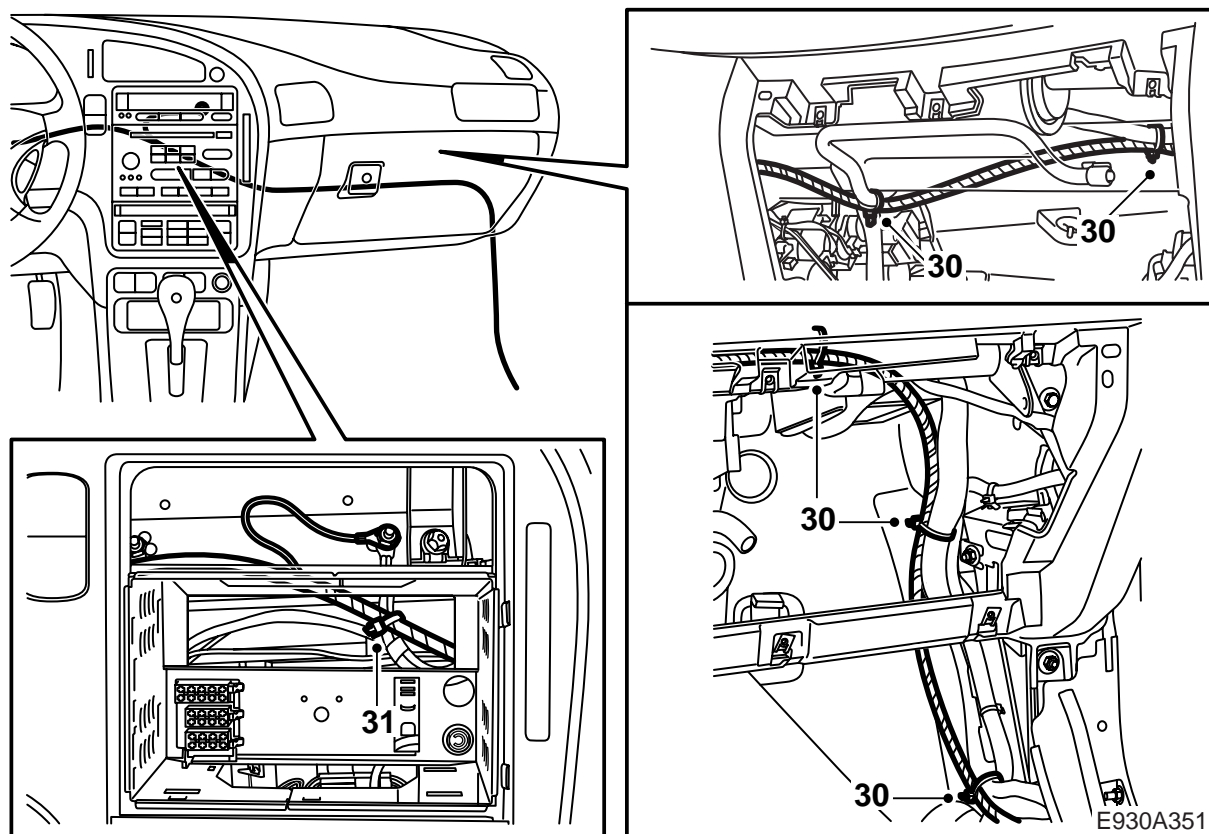
- 21 Remove the radio and SID.
- 22 Remove the data link connector.
- 23 Remove the lower section of the dashboard beneath the steering wheel, 3 screws.
- 24 Remove the floor lighting from the lower section of the dashboard.
- 25 Remove the scuff plate for the left-hand front door and fold aside the carpet.
- 26 Remove the fuse hatch.
- 27 Remove the fuse box, 3 screws, and pull it out through the hole in the side of the panel.
- 28 Pull out the light switch, 2 clips, and detach the connector.



- 29 Route the kit's wiring harness beginning at the connector above the right-hand rear wheel housing, see illustration. Secure the connector with one cable tie at the connector housing and one at the sill duct.

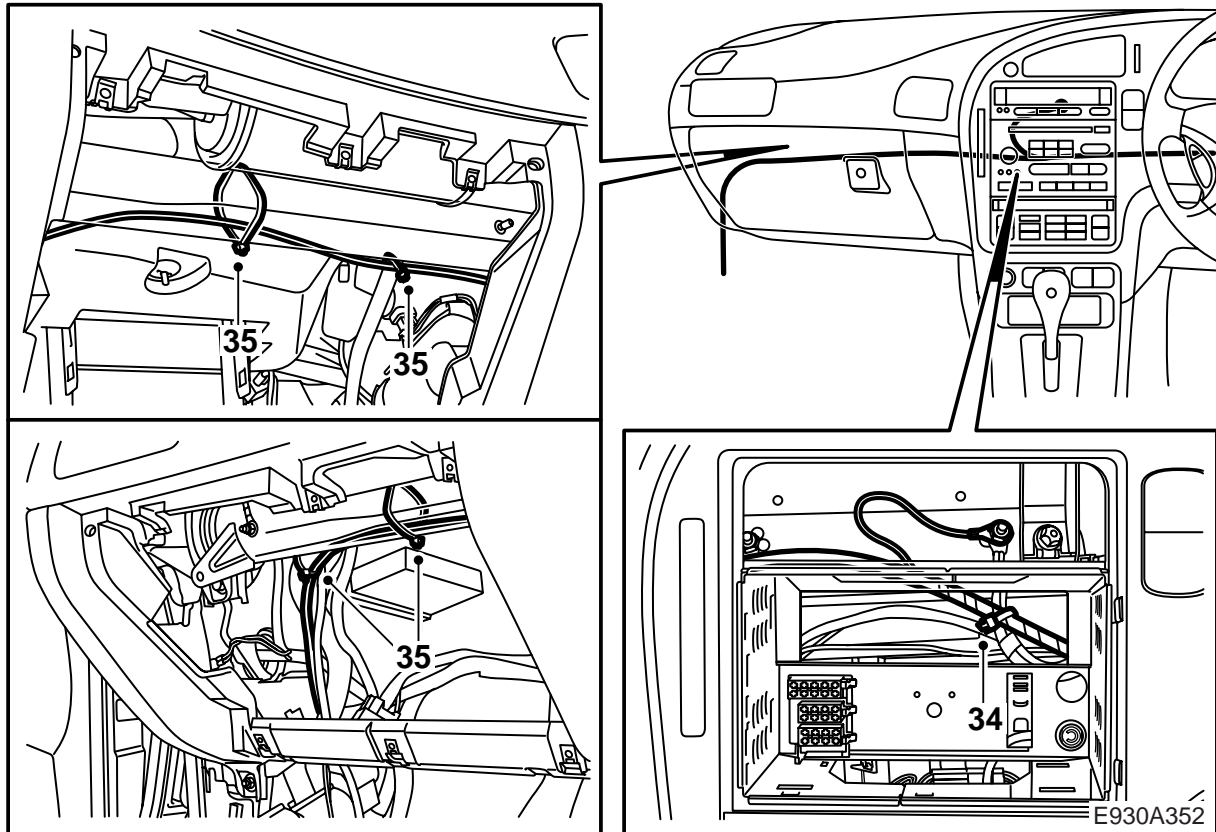
**⚠ WARNING**

The wiring harness must be routed and secured so that it is not trapped or chafes against anything when installing removed parts. Incorrect routing can cause damage to the wiring harness and short circuits/fire.

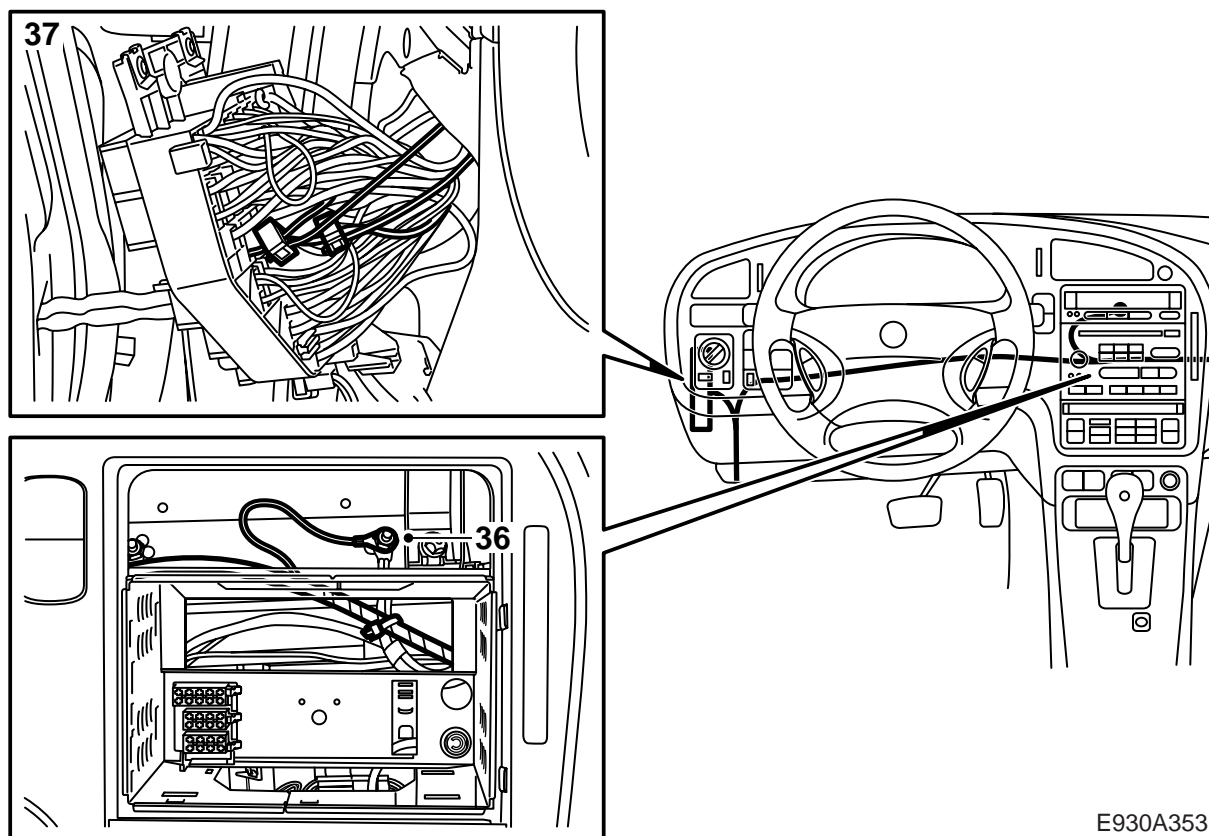


- 30 **LHD:** Route the wiring harness in the sill ducts up to the right-hand A-pillar. Continue along the normal wiring harness for the car to the impact member, through the duct behind the radio over to the left-hand side of the car. Secure with cable ties under the dashboard.
- 31 **LHD:** Fold aside the black cable to the grounding point behind the radio and route the remaining wiring harness along the normal wiring harness for the car under the main instrument unit and steering column to the fuse holder. Secure with cable ties.



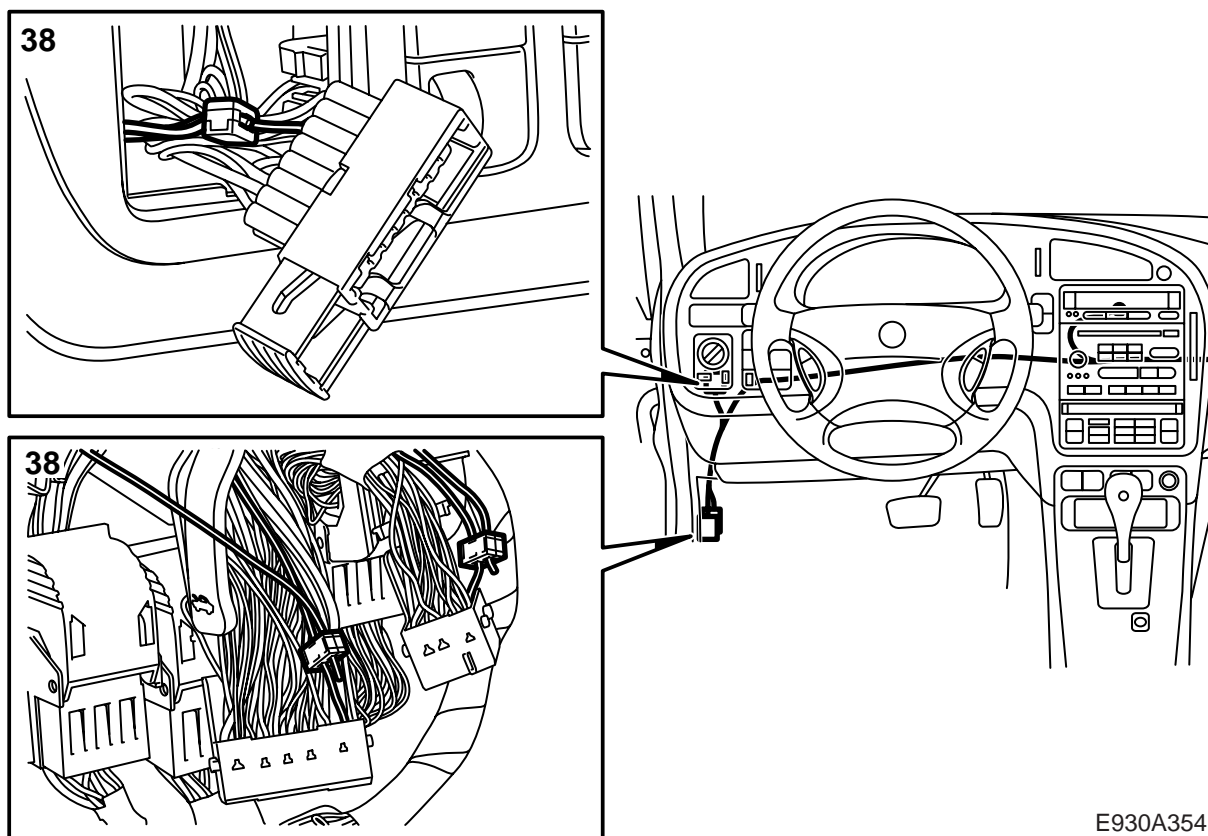


- 32 **RHD:** Route the wiring harness in the sill ducts up to the right-hand A-pillar. Cut open the tape on the kit's wiring harness from the loose cable ends past the loose black cable and a further 700 mm. Route red, red/blue and yellow/blue along the normal wiring harness for the car to the fuse holder. Cut off the remaining cable length and lightly spread the tape.
- 33 **RHD:** Lightly spread the tape on the blue, green and black cable. Allow the black cable to come out of the harness at the same point as before.
- 34 **RHD:** Route the cables along the normal wiring harness for the car under the steering column and main instrument unit, through the duct behind the radio over to the left-hand side of the car.
- 35 **RHD:** Fold aside the black cable to the grounding point behind the radio. Route the remaining wiring harness along the impact member to the connector housing bracket at the left-hand A-pillar.



E930A353

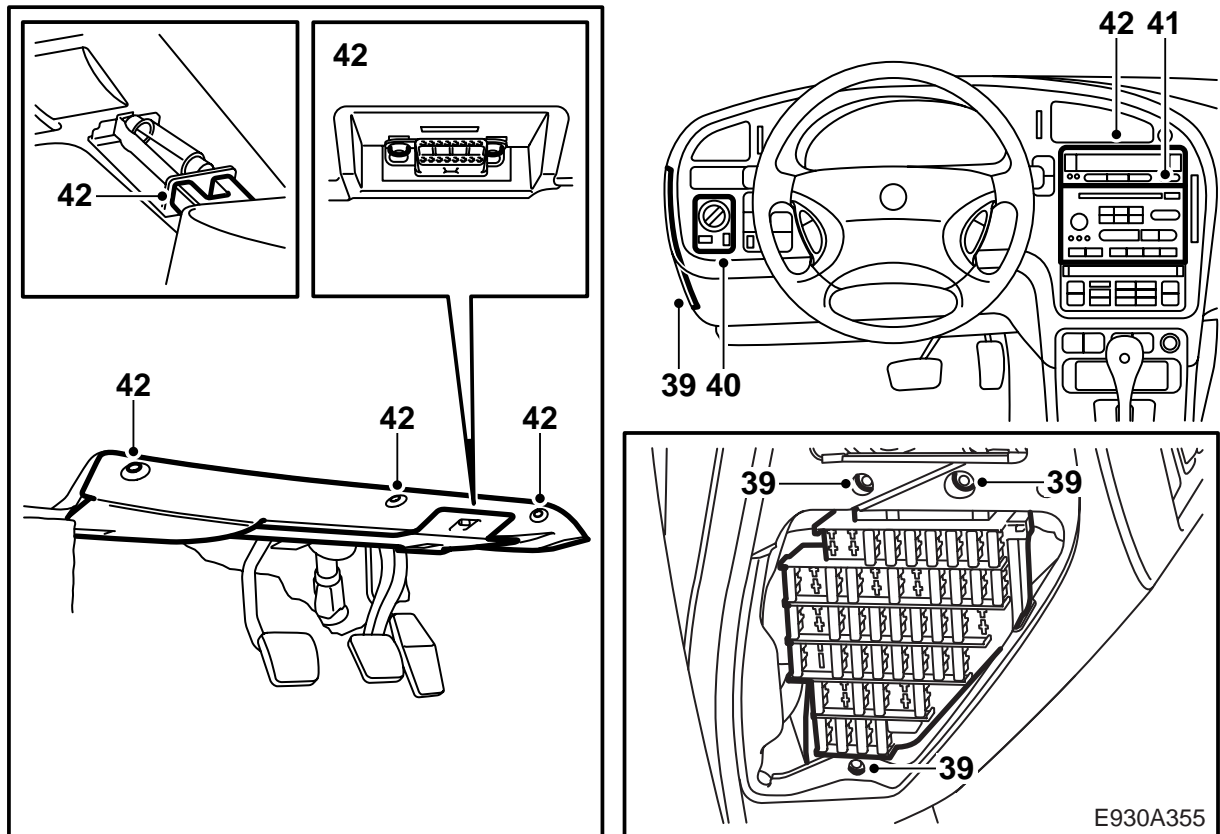
- 36 Fit the kit's cable terminal onto the black cable and connect it to grounding point G41P behind the radio.
- 37 Connect the loose cables using the kit's crimp connections in accordance with the following:
- Red cable: Connected to lower outlet on fuse 23 (+30).
  - Red/blue cable: Connected to lower outlet for fuse 21 (+15).



E930A354

38 Connect the loose cables using the kit's crimp connections in accordance with the following:

- Yellow/blue cable: Connected to pin 11 on the connector to the light switch.
- Blue cable: Connected to pin 79 in the green 80-pin connector housing upper connector at the left-hand A-pillar.
- Green cable:
  - M98-00:** Connected to pin 16 in the white 43-pin connector housing upper connector. If the pin is not coated fit the kit's cable casing and prise it into the connector housing.
  - M01- :** Connected to pin 38 in the white 43-pin connector housing upper connector. If the pin is not coated fit the kit's cable casing and prise it into the connector housing.

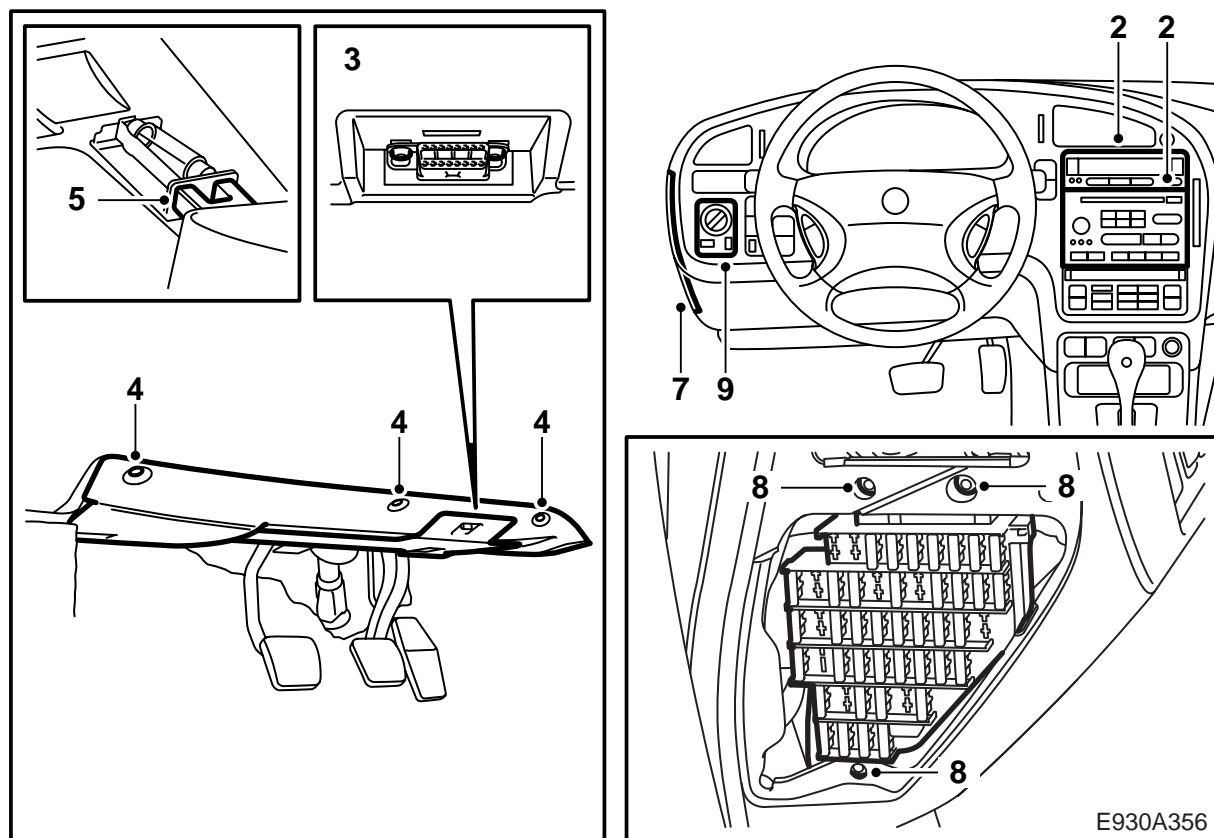


39 Fit the fuse box and the fuse hatch.

**⚠ WARNING**

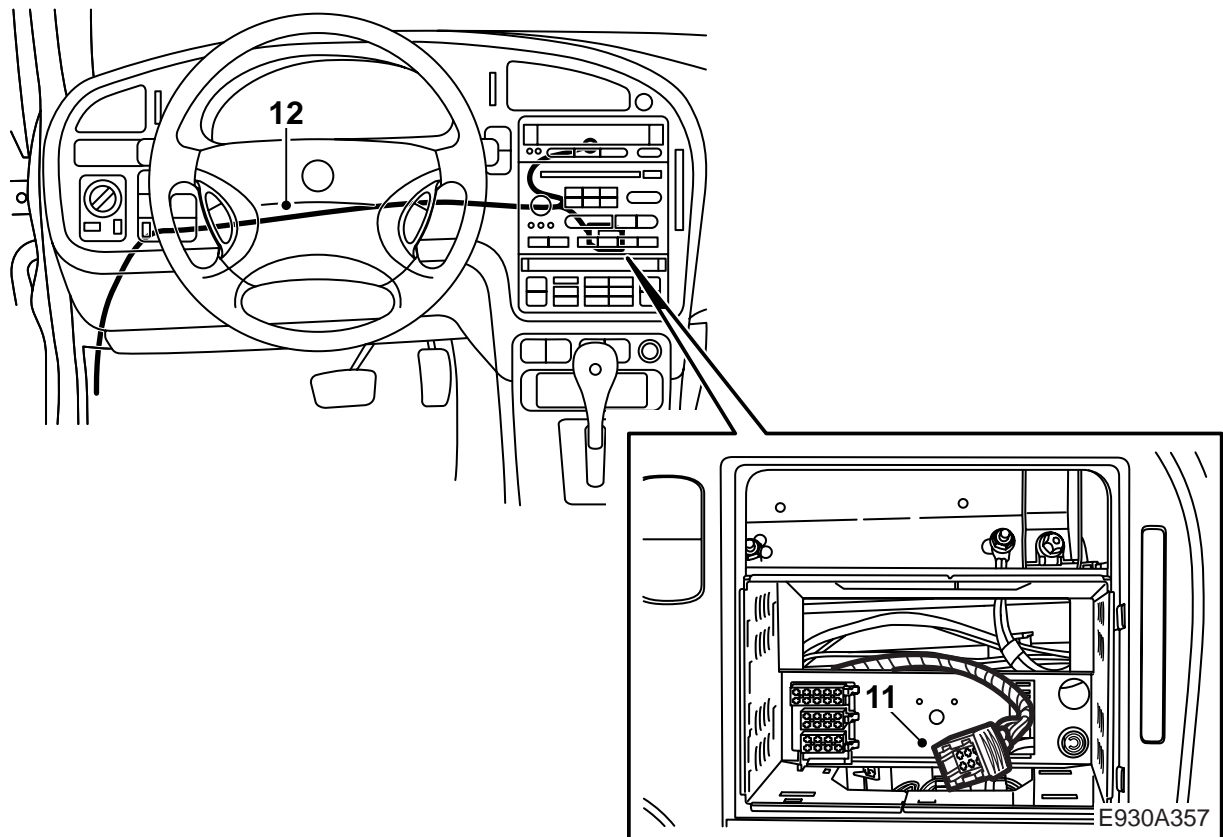
Check that the wiring harness is not pinched. Incorrect fitting can damage the wiring harness and cause a short-circuit/fire.

- 40 Plug in the connector to the light switch and fit it in the dashboard.
- 41 Install the navigation system in accordance with its instructions.
- 42 Fit any remaining parts which were removed.
- 43 Connect the battery.
- 44 Set the radio and SID. Move the electrically adjustable seats to normal position.
- 45 Close the tailgate/boot lid.

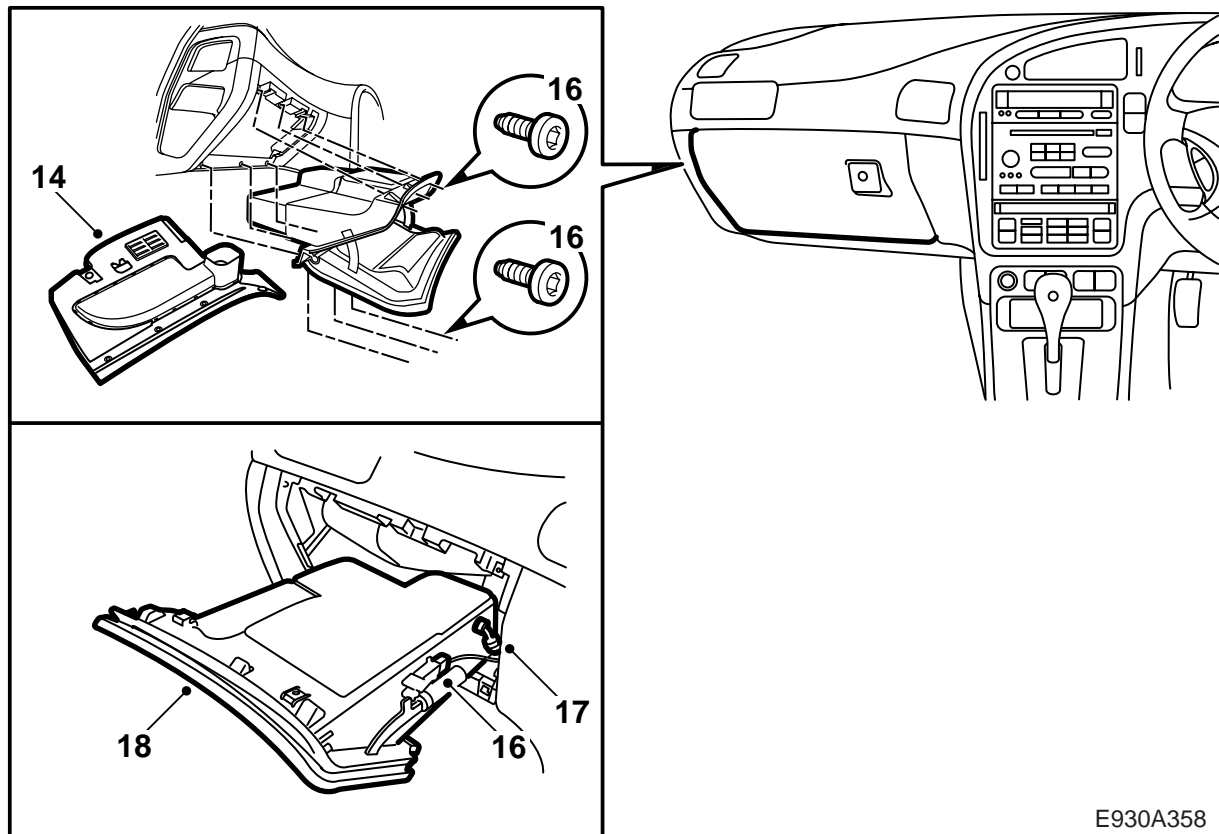


#### Installation for systems with connection behind the radio

- 1 Move the electrically adjustable seats to their rear position. Disconnect the battery negative cable.
- 2 Remove the radio and SID.
- 3 Remove the data link connector.
- 4 Remove the lower section of the dashboard beneath the steering wheel, 3 screws.
- 5 Detach the floor lighting connector.
- 6 Remove the scuff plate for the left-hand front door.
- 7 Remove the fuse hatch.
- 8 Remove the fuse box.
- 9 Pull out the light switch, 2 clips, and detach the connector.

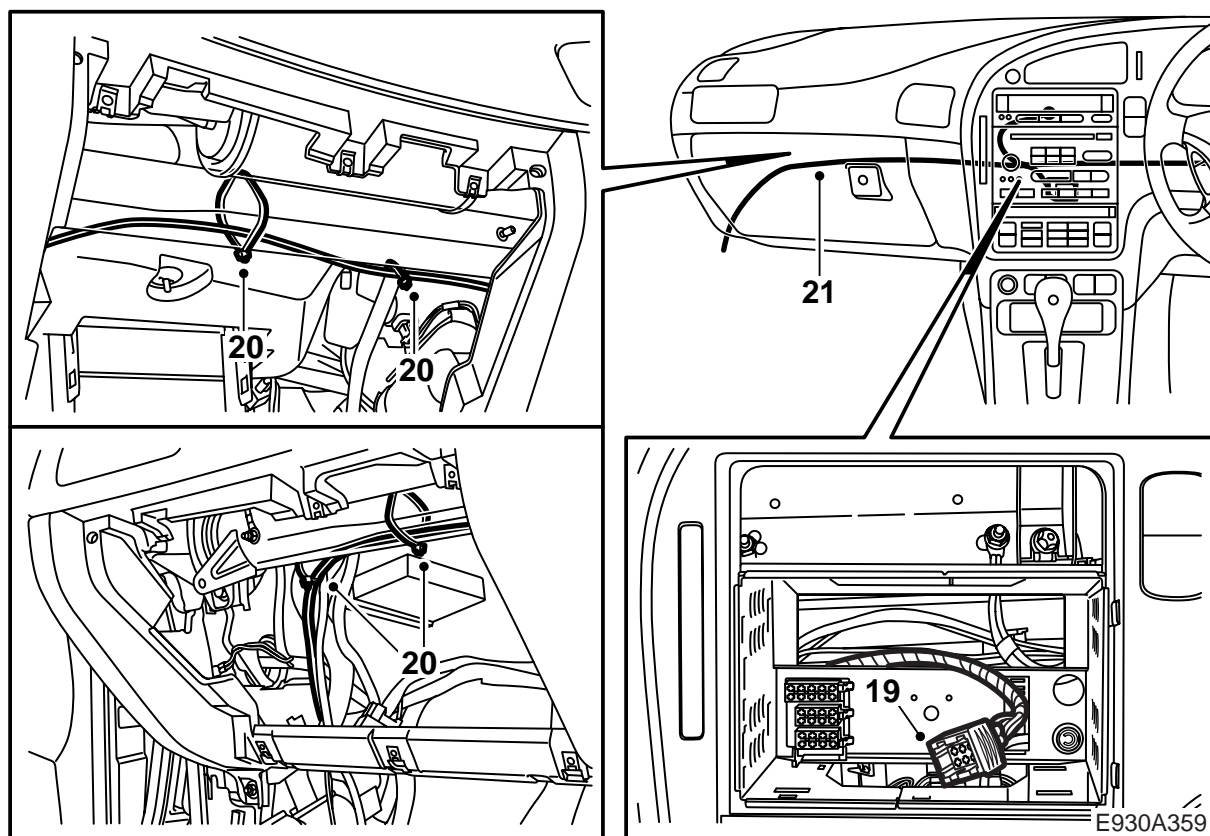


- 10 **LHD:** Cut open the lightly wound tape on the kit's wiring harness from the connector housing on to the loose black cable end. Fold the black cable end aside and lightly spread the tape on the other cables.
- 11 **LHD:** Guide the loose cable ends through the radio socket and position the connector housing in accordance with the illustration. Secure with cable ties.
- 12 **LHD:** Let the black cable remain in the space behind the radio. Guide the remaining cabling along the normal wiring harness for the car under the main instrument unit and the steering column past the fuse box down to the floor at the connector housing bracket.
- 13 **LHD:** Cut off the tape on the wiring harness excess length at the floor and remove the tape on the wiring harness so far as to allow the red and red/blue cable to be drawn to the fuse box and the yellow/blue cable to the light switch connector.



E930A358

- 14 **RHD:** Remove the section of the dashboard below the glove box, 4 screws. There are clips along the front edge.
- 15 **RHD:** Detach the floor lighting connector.
- 16 **RHD:** Remove the 3 lower and 3 inner glove box retaining screws, pull out the glove box slightly and detach the connector for the glove box lighting.
- 17 **RHD: Cars with A/C:** Detach the cooling hose.
- 18 **RHD:** Remove the glove box and the air duct to the dashboard vent.



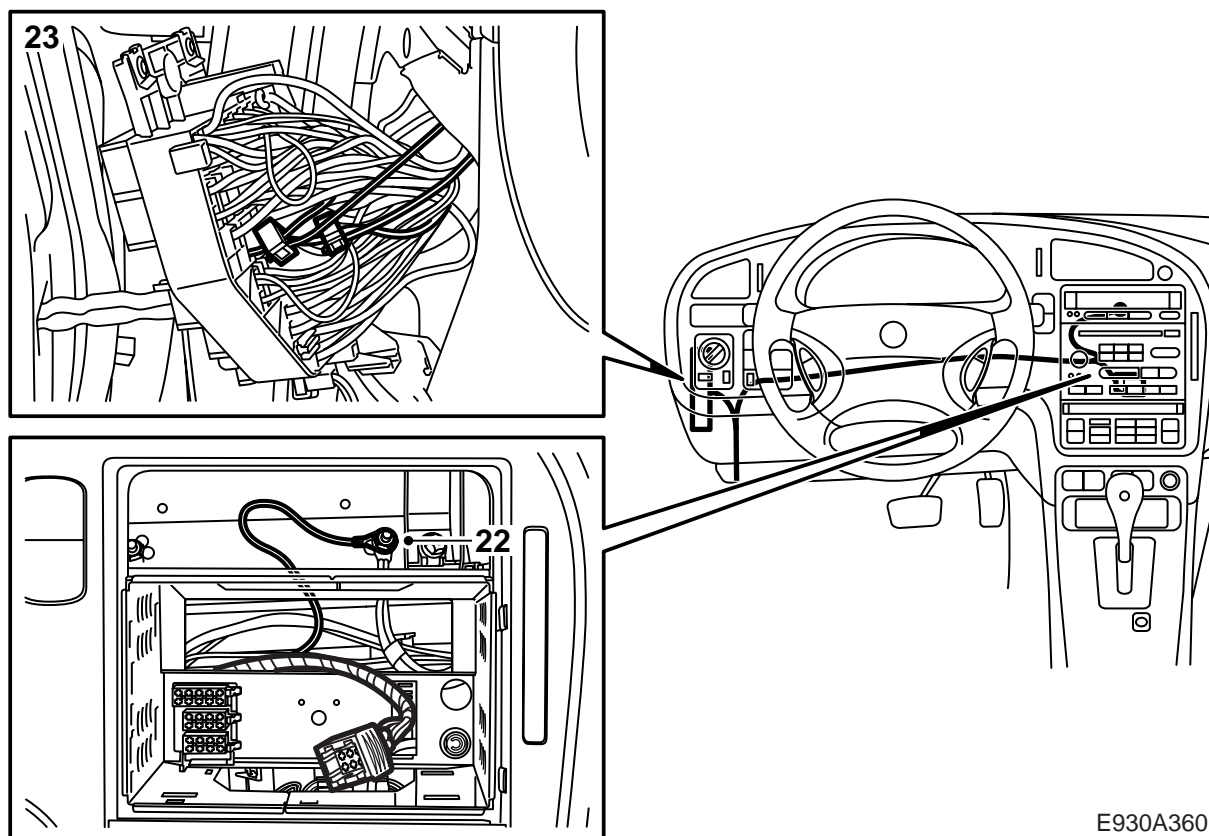
- 19 **RHD:** Cut open the lightly wound tape on the kit's wiring harness. Guide in the loose cable ends through the radio socket and secure the connector housing in accordance with the illustration.
- 20 **RHD:** Let the black cable remain in the space behind the radio. Route the blue and green cable along the impact member down to the floor at the connector housing bracket at the left-hand A-pillar. Cut off the remaining cable length. Lightly spread the tape and secure the cables.

**⚠ WARNING**

The wiring harness must be routed and secured so that it is not trapped or chafes against anything when installing removed parts. Incorrect routing can cause damage to the wiring harness and short circuits/fire.

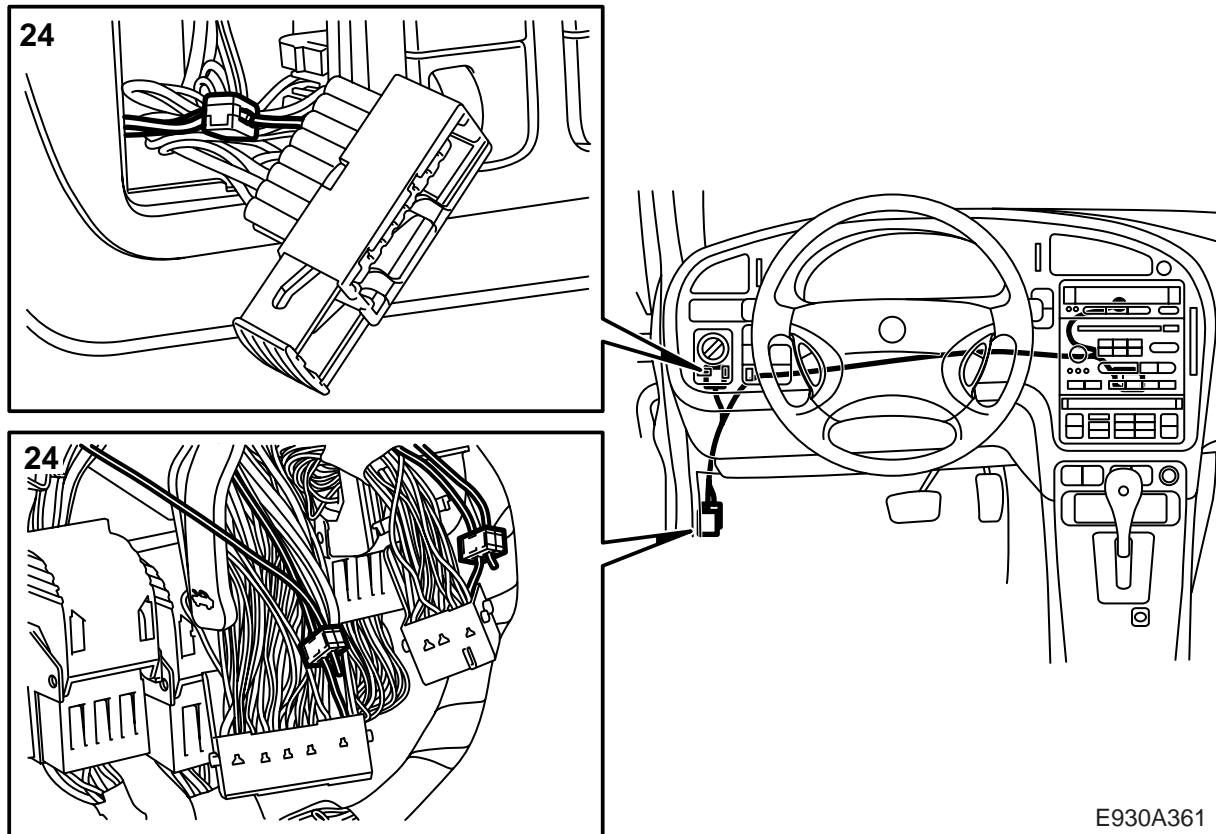
- 21 **RHD:** Route the red and red/blue cable along the normal wiring harness for the car under the main instrument unit and steering column to the fuse box. Route the yellow/blue cable in the same way to the light switch connector. Cut off the remaining cable length. Lightly spread the tape and secure the cables.





E930A360

- 22 Fit the kit's cable terminal on the black cable and connect it to grounding point G41P behind the radio.
- 23 Connect the loose cables using the kit's crimp connections in accordance with the following:
- Red cable: Connected to lower outlet on fuse 23 (+30).
  - Red/blue cable: Connected to lower outlet for fuse 21 (+15).

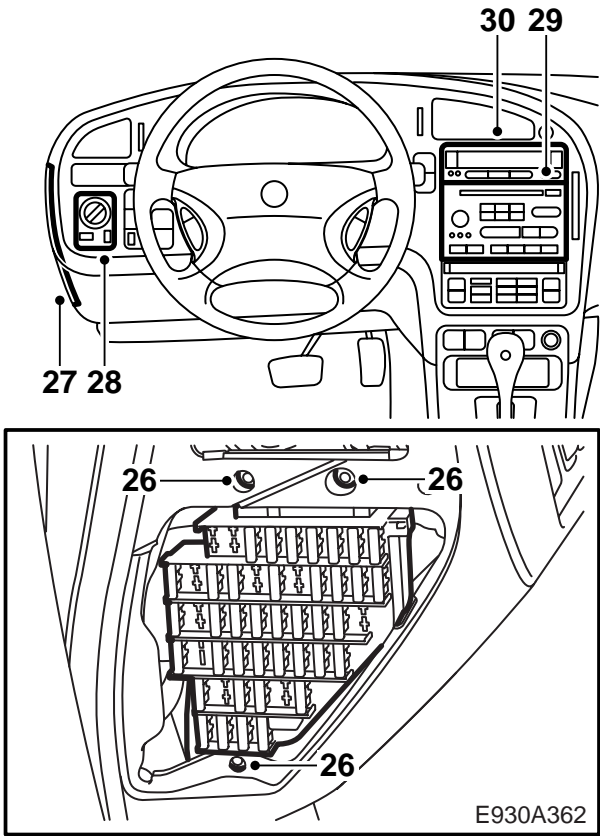
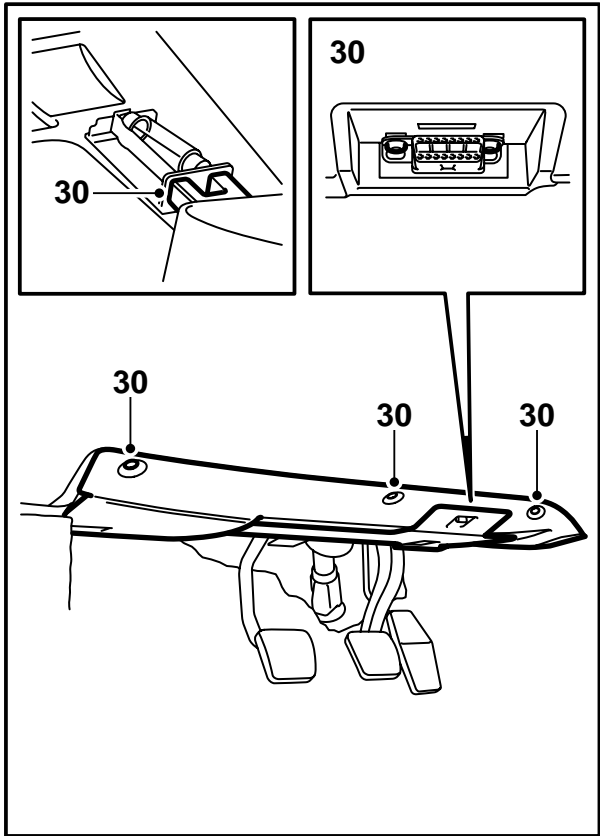


E930A361

24 Connect the loose cables using the kit's crimp connections in accordance with the following:

- Yellow/blue cable: Connected to pin 11 on the connector to the light switch.
- Blue cable: Connected to pin 79 in the green 80-pin connector housing upper connector at the left-hand A-pillar.
- Green cable:
  - M98-00:** Connected to pin 16 in the white 43-pin connector housing upper connector. If the pin is not coated fit the kit's cable casing and prise it into the connector housing.
  - M01- :** Connected to pin 38 in the white 43-pin connector housing upper connector. If the pin is not coated fit the kit's cable casing and prise it into the connector housing.

25 Secure with cable ties.



26 Fit the fuse box.

**⚠ WARNING**

Check that the wiring harness is not pinched. Incorrect fitting can damage the wiring harness and cause a short-circuit/fire.

- 27 Fit the fuse hatch.
- 28 Plug in the connector to the light switch and fit it in the dashboard.
- 29 Install the navigation system in accordance with its installation instructions.
- 30 Fit any remaining parts which were removed.
- 31 Connect the battery.
- 32 Set the radio and SID. Move the electrically adjustable seats to normal position.

**Connector housing connection**

Pin	Signal	Cable colour
1	+15	Red/blue
2	+30	Red
3	Reversing lights	Blue
4	Speed	Green
5	Headlamps	Yellow/blue
6	Ground	Black