

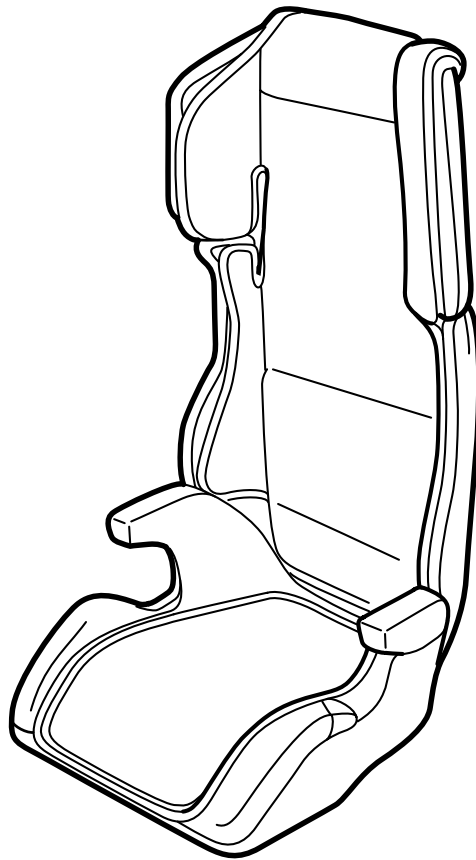


**MONTERINGSANVISNING · INSTALLATION INSTRUCTIONS  
MONTAGEANLEITUNG · INSTRUCTIONS DE MONTAGE**

## Saab 9-3, Saab 9-5

Child safety seat "Saab Belt Seat"

Accessories Part No.	Group	Date	Instruction Part No.	Replaces
12 799 916 12 823 257	9:88-16	Dec 09	12 798 999	Jun 02



D980A353

Important	page	2
Fitting	page	3

## Important

 **WARNING**

Read all instructions before using the child seat. The child seat may **under no circumstances** be fitted in any manner other than that described in these installation instructions.

Approved for forward mounting in accordance with ECE R44.04 Group 2+3 for children of age 3-10 years or 15-36 kg. The child safety seat is approved only in combination with a 3-point seat belt, which in turn is approved in accordance with ECE R16 or other equivalent standard.

 **WARNING**

If the car is equipped with a front passenger airbag, the child seat **must absolutely not** be fitted in this seat.

Before fitting the child seat in the front passenger seat, make sure that the car does not have a front passenger airbag. On cars equipped with a front passenger airbag, the text **AIRBAG** and/or **SRS** is found on the dashboard in front of the passenger seat and there is a label on the passenger side sun visor or the end of the dashboard on the passenger side. In certain markets, there is also a label on the dashboard shell in front of the passenger seat or on the sun visor.

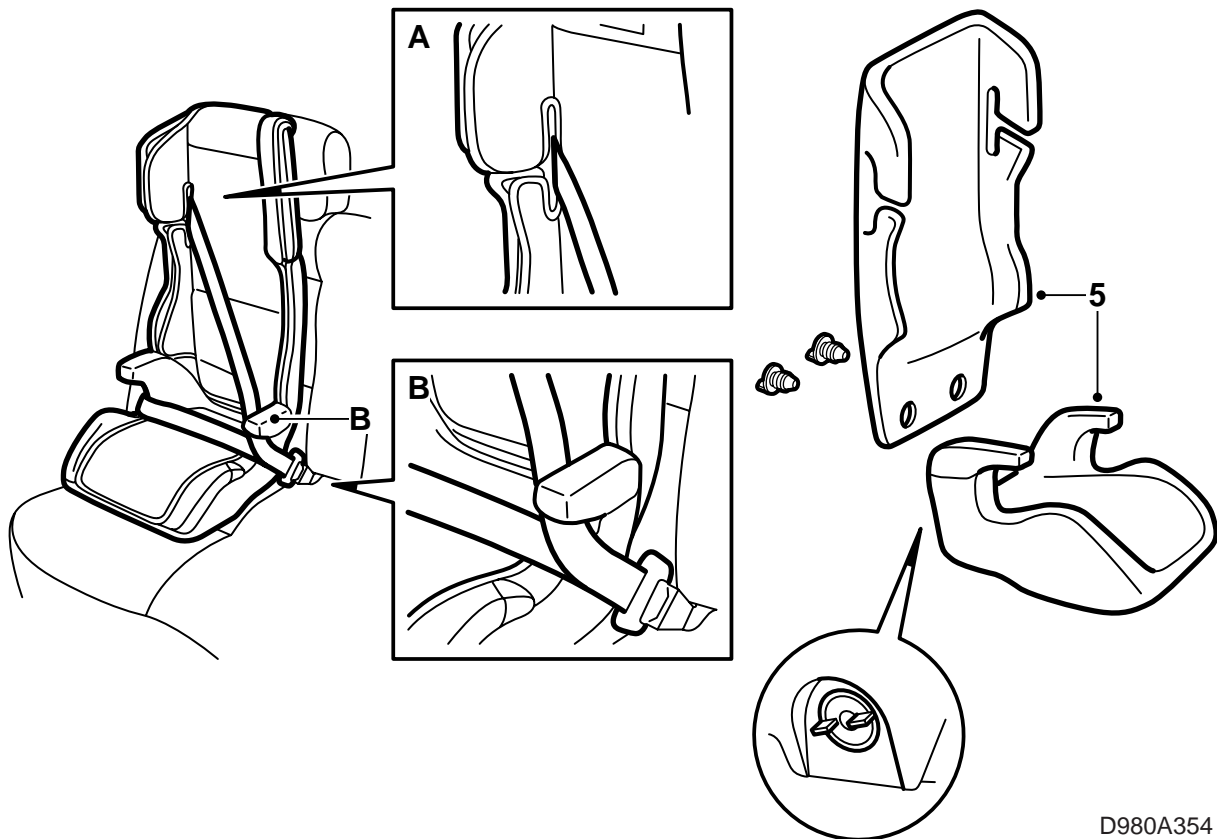
---

## Important

Become acquainted with national regulations regarding child seat placement.

---

- If the child seat backrest is removed, the child seat **must** be placed in a position where there is a head restraint.
- The child must **always** be strapped in, even for short journeys.
- Make sure the belt securing the child safety seat is properly tensioned and not caught in the car door.
- Make sure the belt is not twisted and that it is resting firmly against the child's body. It is important that the lap belt is across the hip and not the abdomen.
- Never leave a child unattended in the child safety seat.
- If the child safety seat has been involved in a collision, it **must never** be used again.
- The child seat could be damaged by being caught in the door, for example.
- Remember that the child safety seat can become extremely hot if left in the sun.
- The child safety seat must not be modified in any way without the approval of the manufacturer.
- The seat must **always** be strapped into the car, even when unoccupied. There is otherwise risk of it injuring the driver or passengers during emergency braking or in case of a collision.
- If the rear seat can be folded down, make sure the backrest is properly locked in the upright position.
- All loads should be well secured.
- The child seat must not be used without upholstery. The original upholstery should be used.
- Washing advice:  
See the label sewn inside the seat upholstery.
- Contact your nearest Saab dealer if you have any questions.



D980A354

## Fitting

### **WARNING**

If the car is equipped with a front passenger airbag, the child seat **must absolutely not** be fitted in this seat.

Before fitting the child seat in the front passenger seat, make sure that the car does not have a front passenger airbag. On cars equipped with a front passenger airbag, the text **AIRBAG** and/or **SRS** is found on the dashboard in front of the passenger seat and there is a label on the passenger side sun visor or the end of the dashboard on the passenger side. In certain markets, there is also a label on the dashboard shell in front of the passenger seat or on the sun visor.

- 1 Place the child safety seat on the car seat so that it is resting firmly against the backrest.
- 2 Seat the child in the child safety seat, making sure the child is sitting comfortably and leaning against the backrest.
- 3 Pull both the shoulder and the lap belts across the child and buckle them in. The shoulder belt should run through the slit (A) in the seat backrest. Both the shoulder and the lap belts should pass under the child seat belt guide (B) on the latch side of the belt.

- 4 Make sure the belt is not twisted and that it rests firmly against the body of the child. It is important that the lap belt is resting on the hipbone and not across the abdomen. The diagonal part must be firm against the child's shoulder.
- 5 When necessary, the backrest can easily be detached from the seat cushion by removing two screws. In this case, the seat cushion must be used in a position with head restraint.