

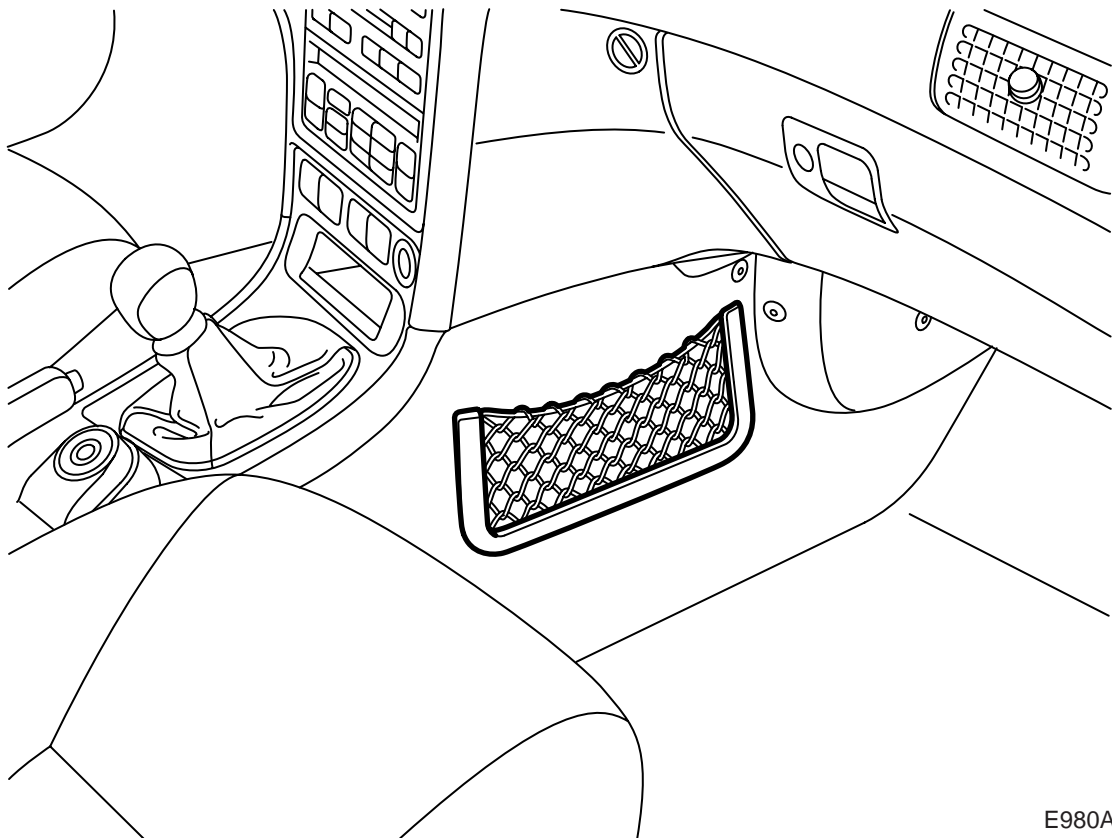


**MONTERINGSANVISNING · INSTALLATION INSTRUCTIONS  
MONTAGEANLEITUNG · INSTRUCTIONS DE MONTAGE**

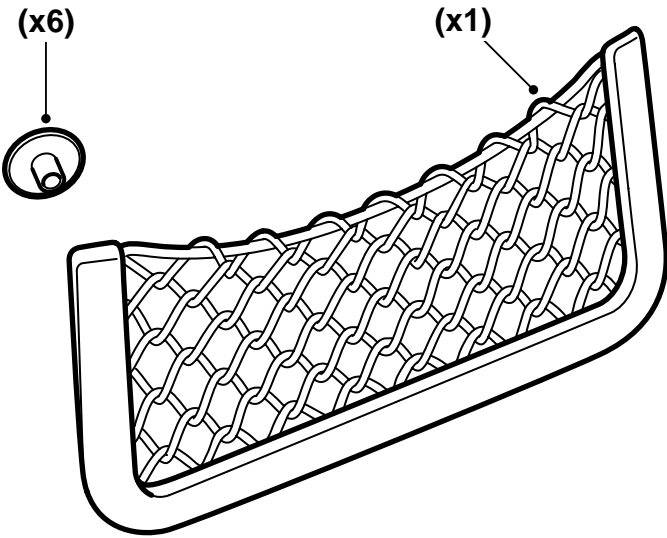
## Saab 9-5

### Mesh pocket

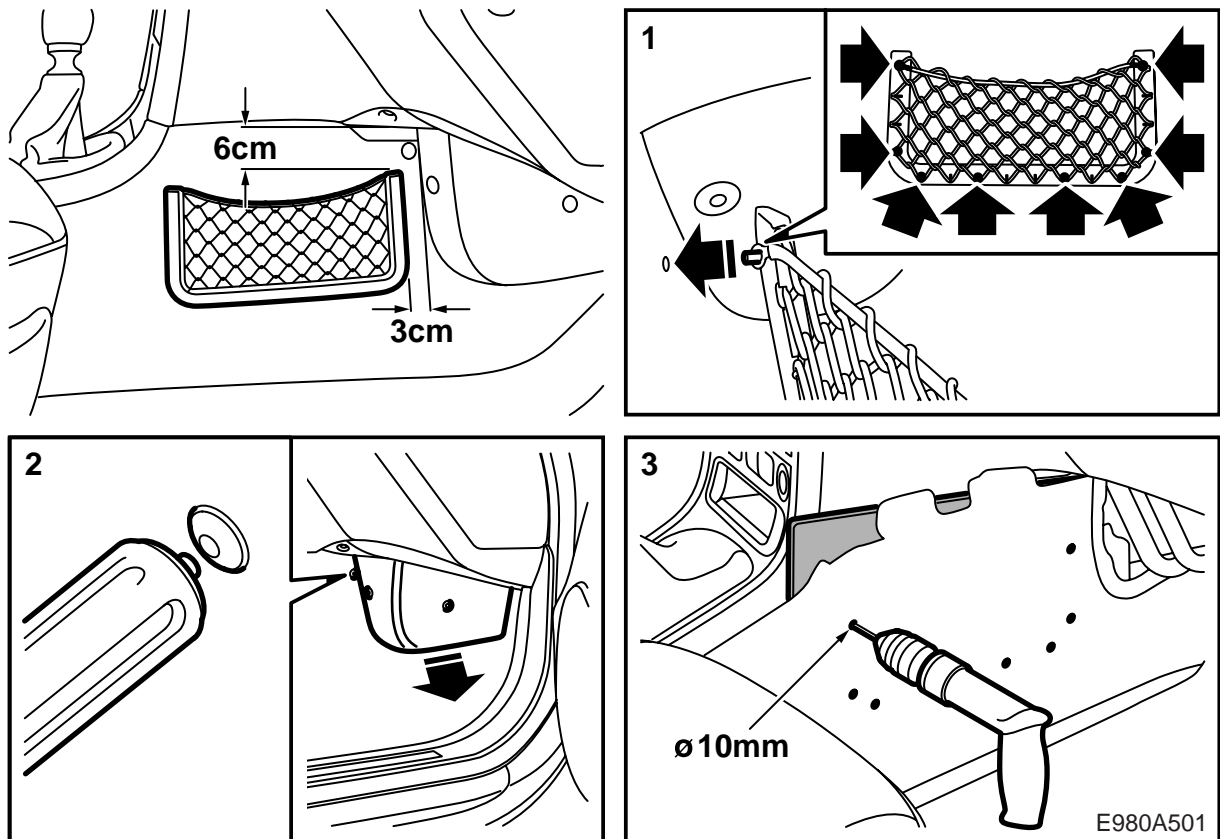
Accessories Part No.	Group	Date	Instruction Part No.	Replaces
<b>32 025 853</b>	<b>9:89-29</b>	<b>Sep 06</b>	<b>32 025 627</b>	<b>32 025 627 May 05</b>



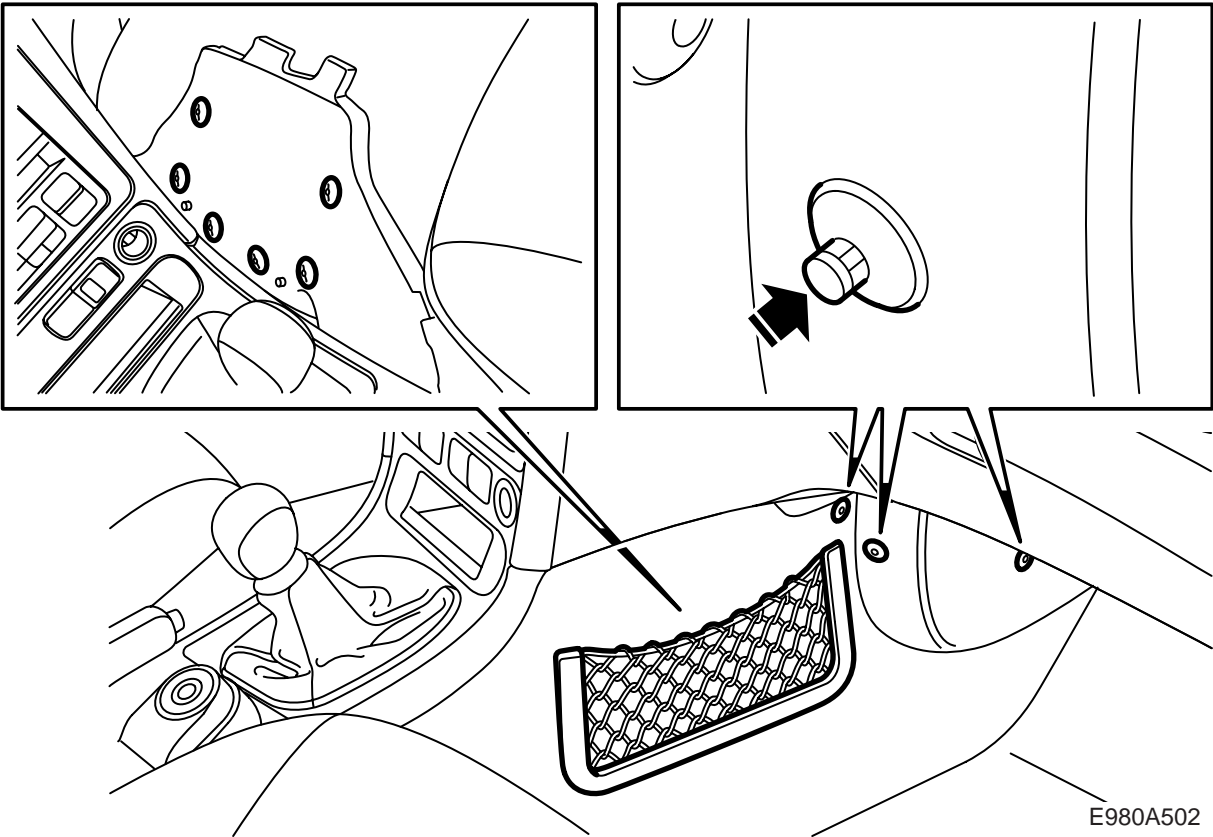
E980A499



E980A500



- 1 Press the mesh pocket against the mat and mark out the hole positions using a pencil.
- 2 Remove the protective cover for the AC pipe (three clips).
- 3 Detach the mat from the panel. Place a board behind the mat and drill holes at the markings. First use a 5 mm drill bit and then a 10 mm drill bit.



E980A502