

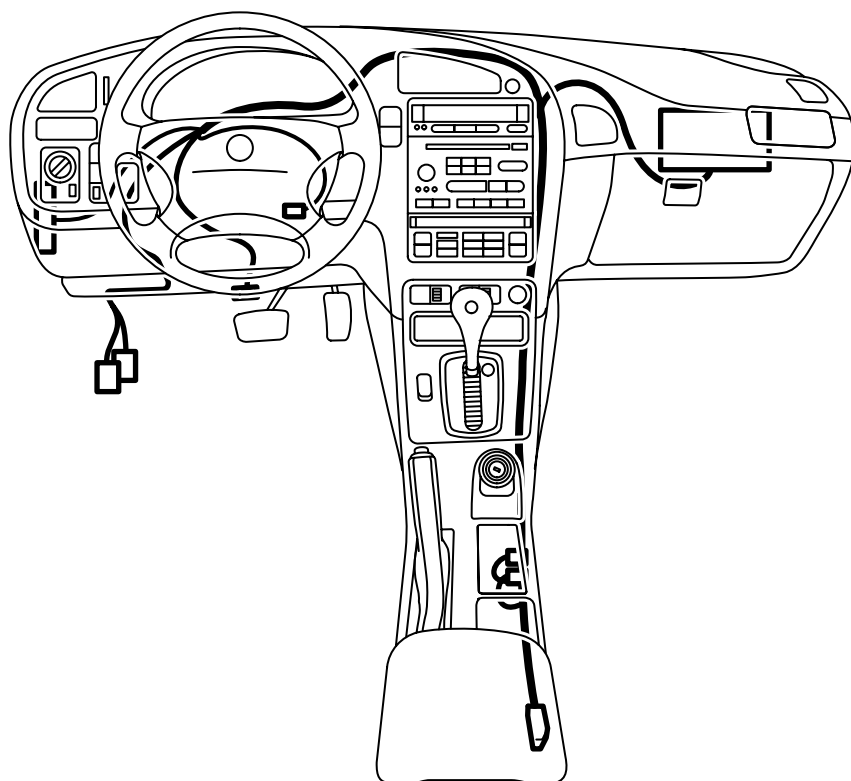


MONTERINGSANVISNING · INSTALLATION INSTRUCTIONS MONTAGEANLEITUNG · INSTRUCTIONS DE MONTAGE

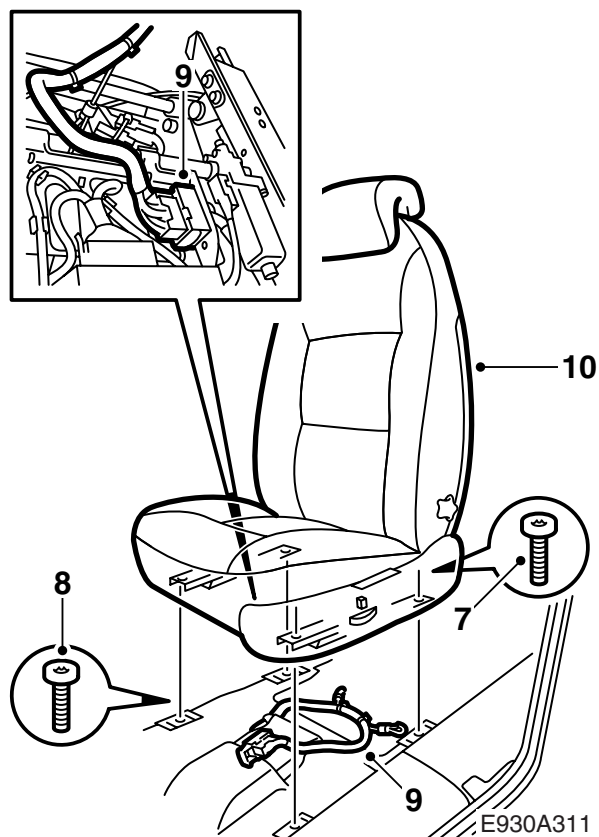
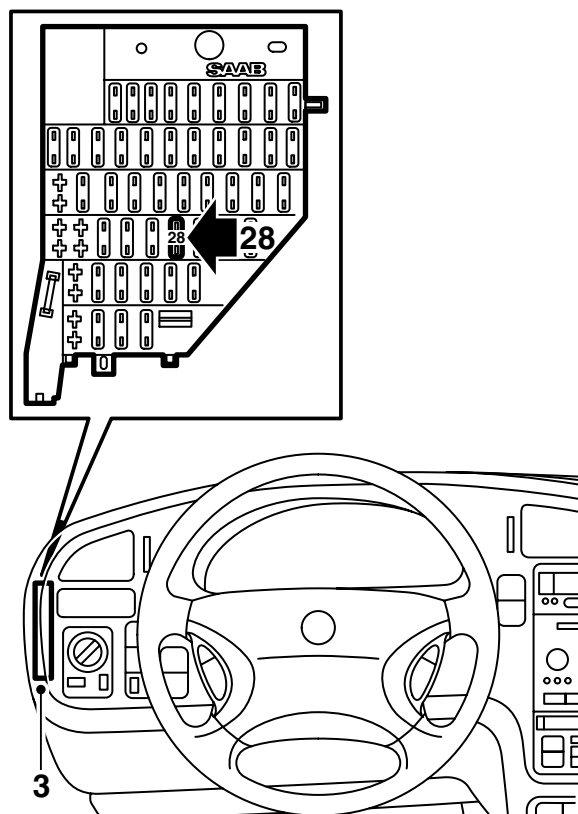
Saab 9-5 M02-03

Airbag replacement harness

Accessories Part No.	Group	Date	Instruction Part No.	Replaces
54 79 571 54 79 589	8:50-07	Sep 04	54 79 597	54 79 597 Nov 02



E930A309

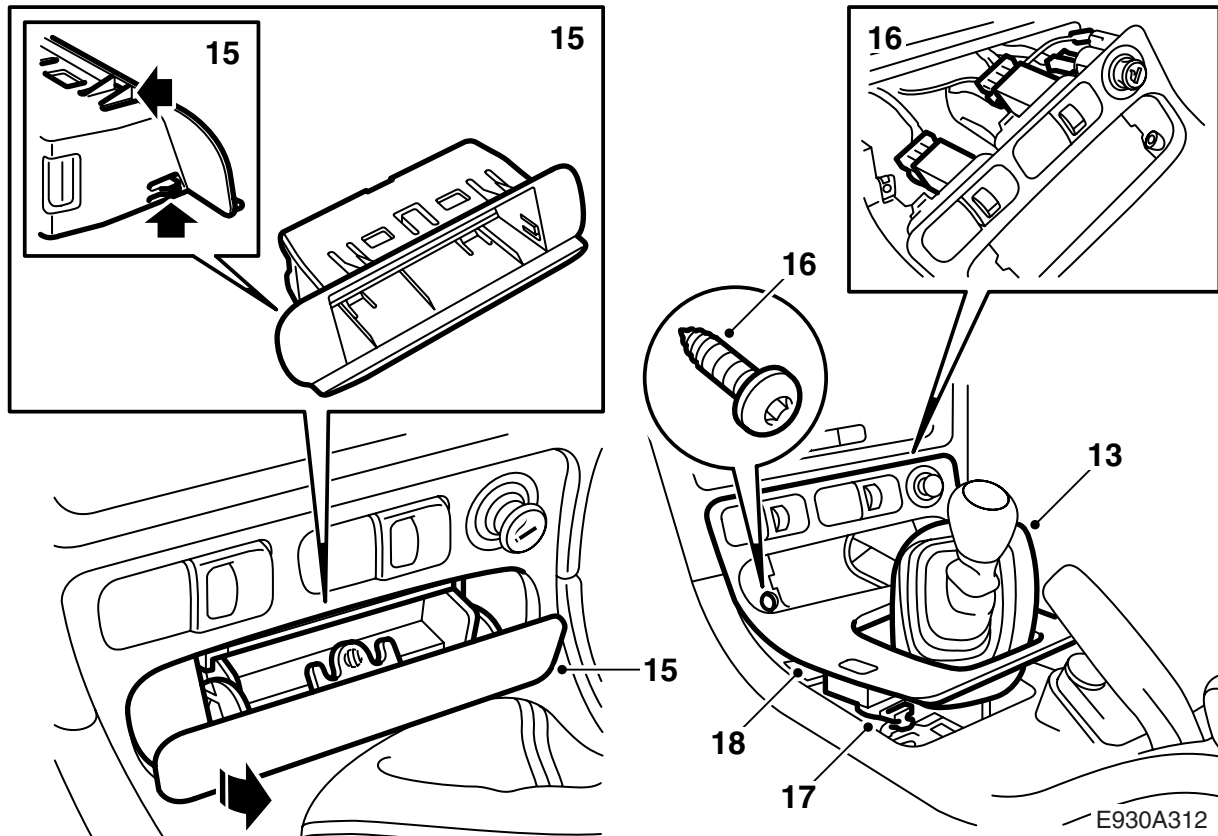


12 Disconnect the negative battery cable.

WARNING

Check that the wiring harness is not pinched. Incorrect fitting can damage the wiring harness and cause a short-circuit/fire.

- 1 Before the work begins, make sure that any radio code is accessible.
- 2 **Electrically adjustable seat:** Move the driver's seat to its rear position.
- 3 Remove the cover from the fuse box. (The fuse box is located on the left-hand side in LHD and right-hand side in RHD)
- 4 Remove fuse 28 from the fuse box.
- 5 Turn the ignition key to the "ON" position, measure and record which of the cable terminals for fuse 28 is not live.
- 6 Push the passenger seat forward to the front position.
- 7 Undo the seat at the rear edge, 2 screws.
- 8 Push the seat back and unscrew the 2 front screws. Turn the ignition key to the "OFF" position.
- 9 Lean the seat backwards, cut off cable ties and remove the 29-pin connector under the seat.
- 10 Lift out the seat and if necessary undo the seat belt from the seat.
- 11 Safeguard the covers beneath the seat rails.

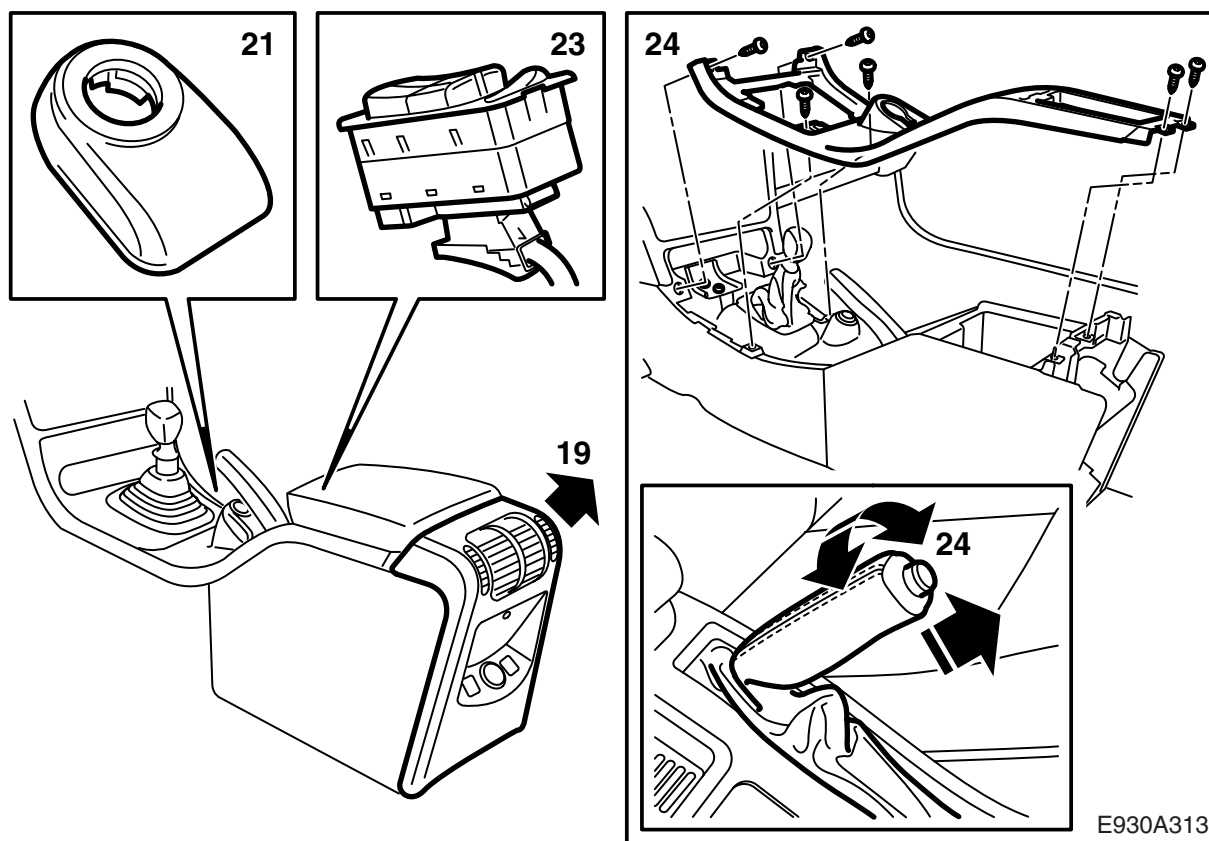


- 13 **Manual transmission:** Lift up the gear lever gaiter.
- 14 **Automatic transmission:** Remove the rim, use 82 93 474 Removal tool.
- 15 Remove the storage compartment, or the ash-tray, with holder. Use a screwdriver and 82 93 474 Removal tool.
- 16 Lift up the gear lever cover and remove the connector to the switches for seat heating, seat ventilation and cigarette lighter.
- 17 Detach the connector from the central locking system's switch.

Important

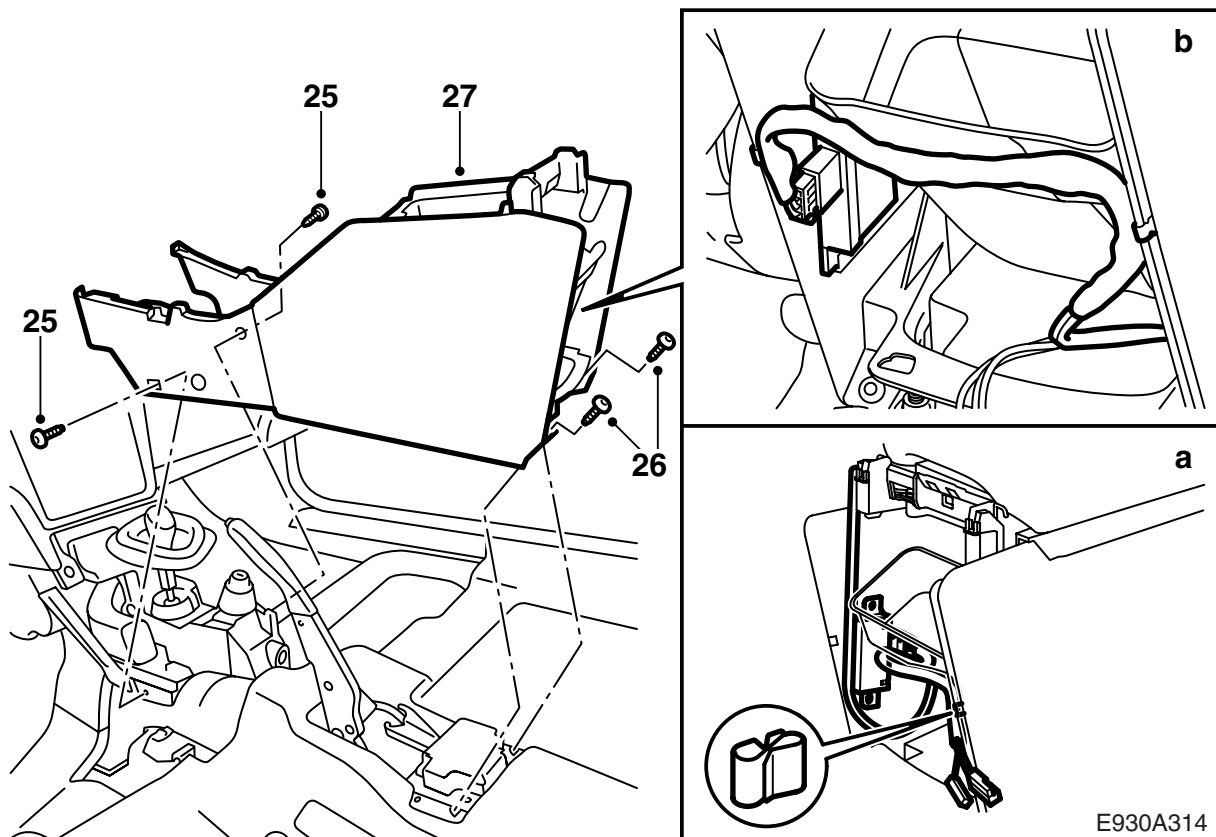
Mark up the connectors so that they are not fitted incorrectly.

- 18 Remove the gear lever cover.

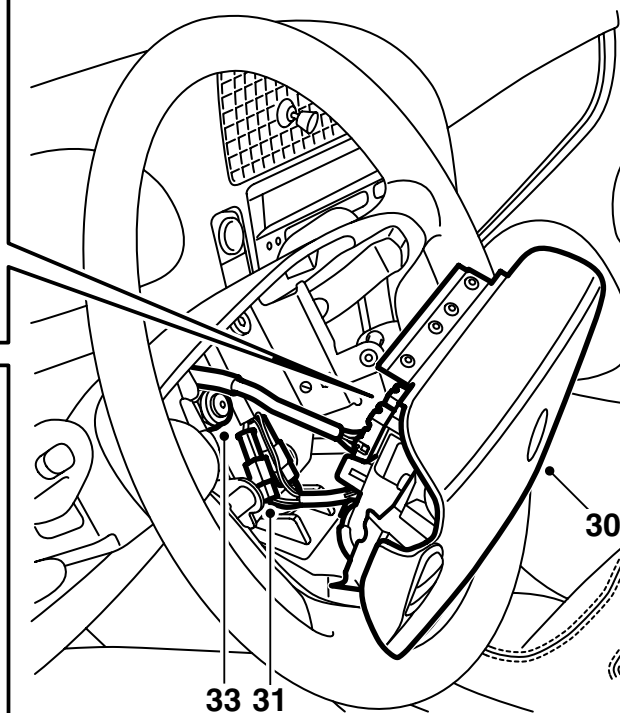
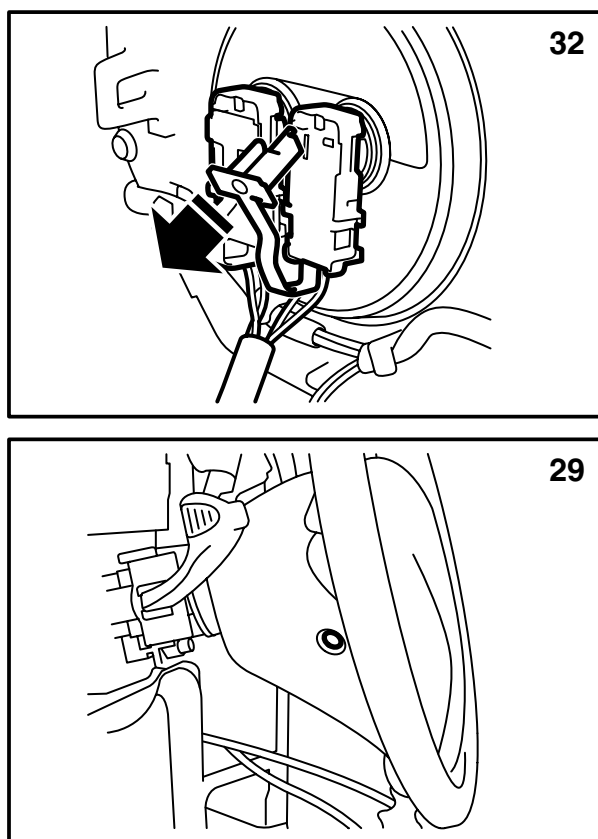


E930A313

- 19 Remove the rear section of the centre console by lifting it straight up and removing the connector.
- 20 Select reverse gear (manual) or P-position (automatic) and remove the ignition key.
- 21 Turn and lift up the theft protection antenna unit (bayonet fitting) from the ignition switch and remove the connector.
- 22 Put the key in the ignition and select neutral position.
- 23 Undo the switch for the electric window lifts and remove the connector, Use 82 93 474 Removal tool.
- 24 Remove the screws which hold the centre console upper section, twist off the covering on the handbrake handle and lift away the console upper section.

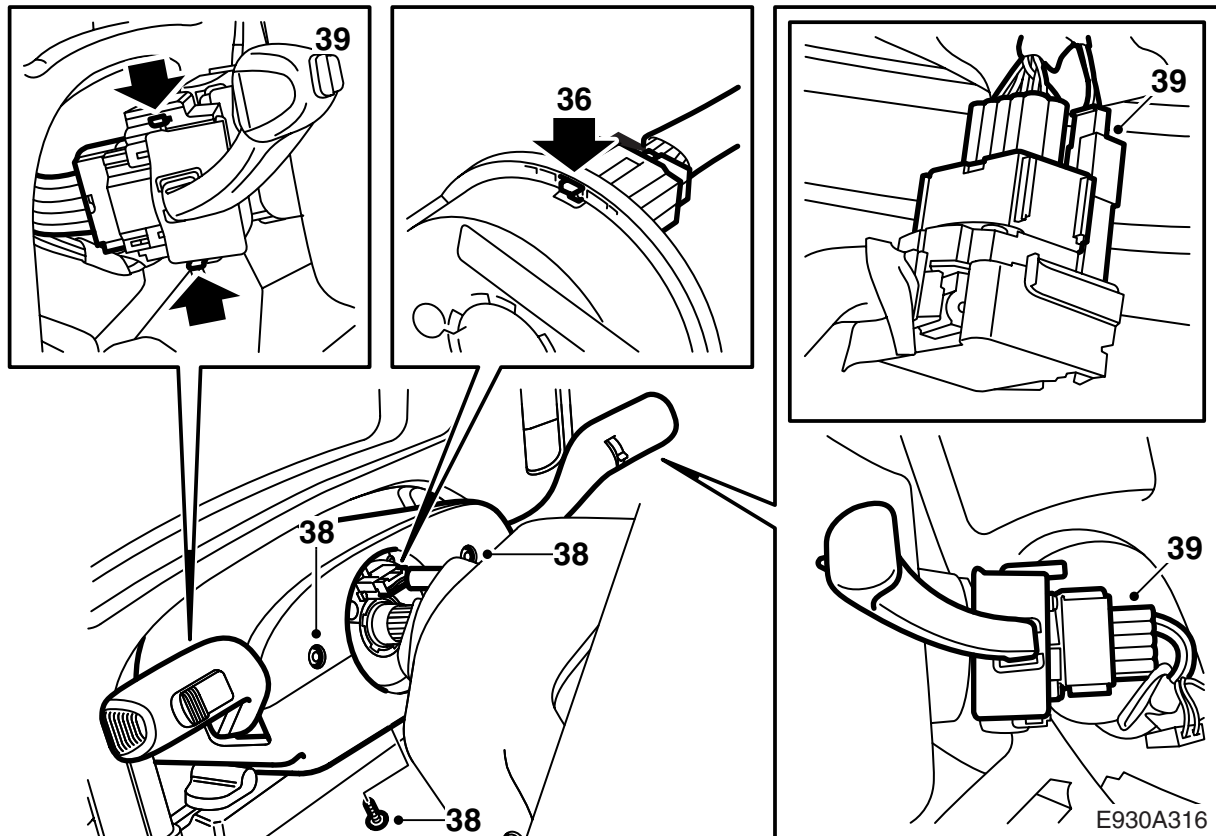


- 25 Fold the carpets forward and undo the front screws holding the centre console lower section.
- 26 Undo the rear screws, x 2.
- 27 Lift up and remove the centre console lower section.
- 28 Detach the connector from the central locking system's remote control receiver unit.
 - a **Market JP:** Remove the central locking system's remote control receiver unit.
 - b **Other markets except JP:** Remove the central locking system's remote control receiver unit.

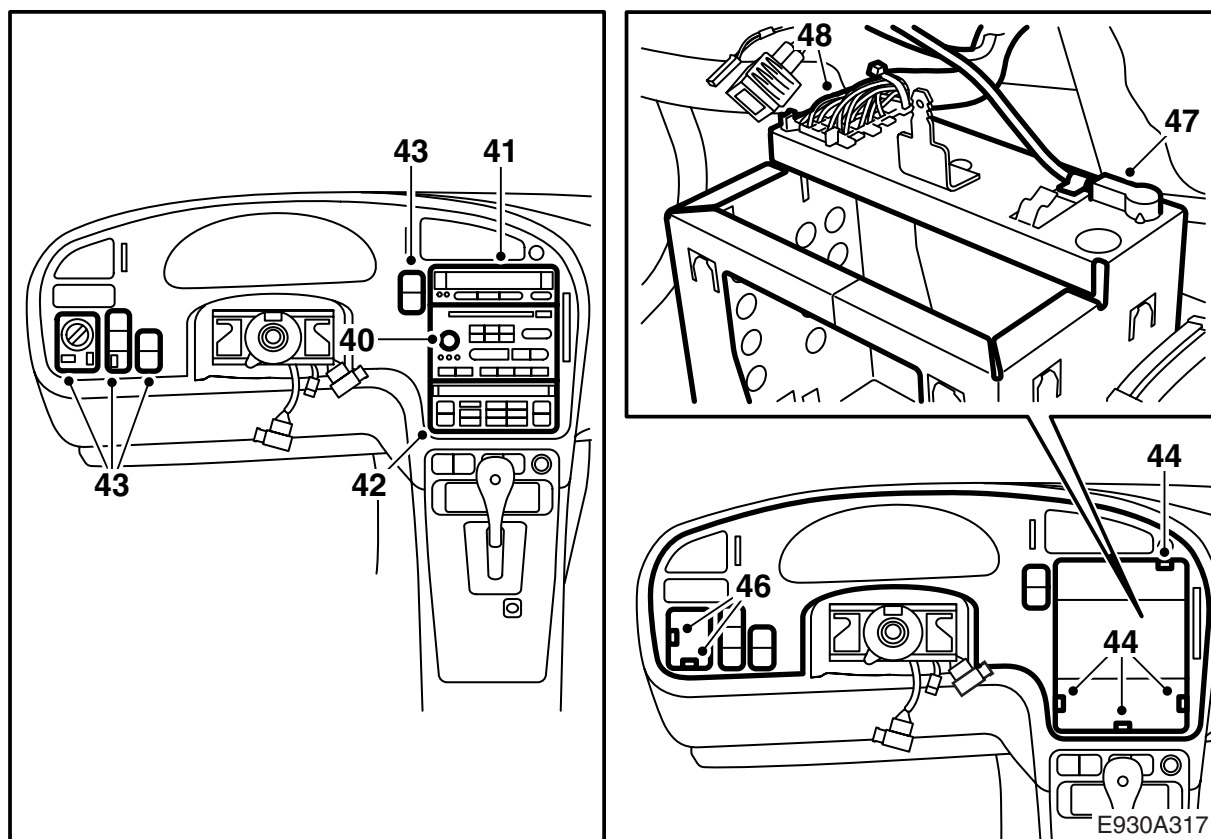


E930A315

- 29 Remove the driver's airbag, 2 screws and plugs.
- 30 Lift out the driver's airbag slightly from the steering wheel and undo the connector from the velcro bracket. Remove the connectors.
- 31 **For cars with control buttons in the steering wheel:** Remove the connector for the control buttons.
- 32 Remove the connectors from the rear of the driver's airbag.
- 33 Undo the steering wheel nut several turns and draw in the steering wheel so that it releases from the steering column.
- 34 Remove the steering wheel nut.
- 35 Draw out the steering wheel as far as necessary to reach the connector on the contact roller.



- 36 Remove the steering wheel harness connector from the contact roller. Make sure that the contact roller locking mechanism is locked.
- 37 Remove the steering wheel.
- 38 Remove the upper and lower steering wheel covers.
- 39 Remove the steering wheel switches by pressing in the catch and drawing the switch straight out. Remove the steering wheel switch connectors.

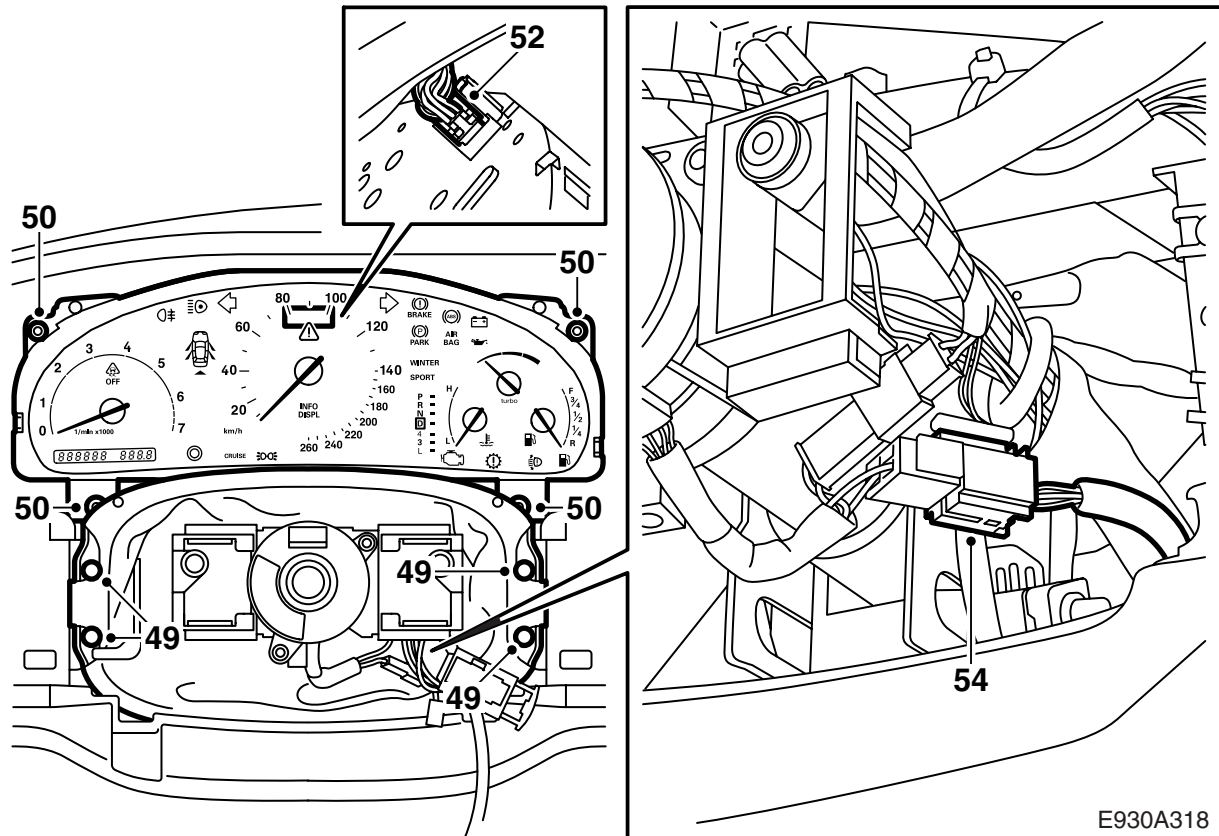


- 40 Remove the radio unit. Use 84 71 161, Removal tool, audio system. Draw the radio unit straight out.
- 41 Remove the connector and remove SID (Saab Information Display). Use 82 93 474 Removal tool.
- 42 Remove the connector and remove the ACC unit. Use 82 93 474 Removal tool.
- 43 Remove the connectors and remove the switches to the left and to the right of the steering wheel. (The number of switches varies depending on which equipment the car has). Use 82 93 474 Removal tool.

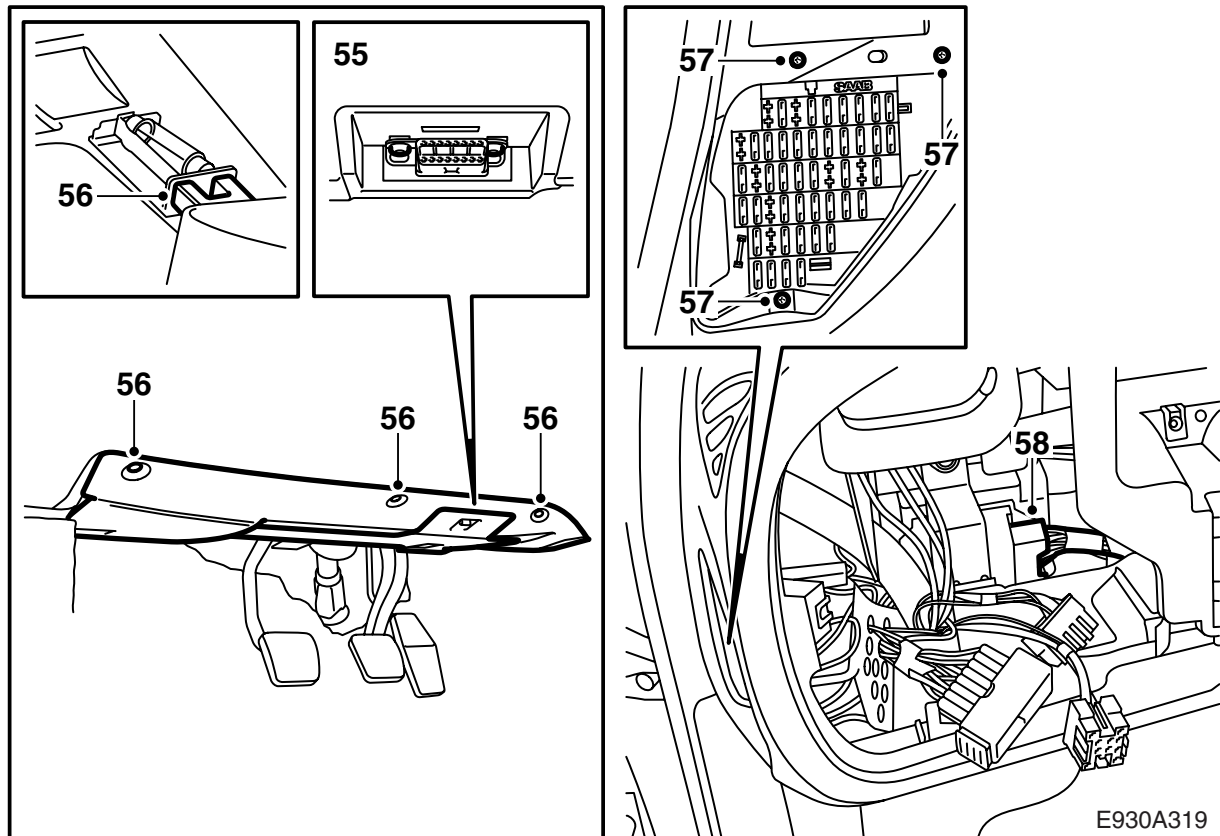
Important

Mark up the connectors so that they are not fitted incorrectly.

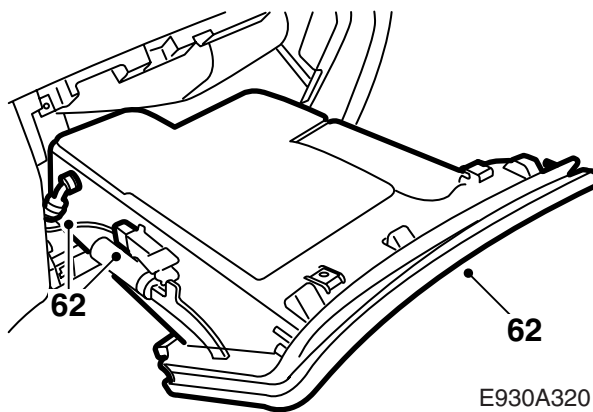
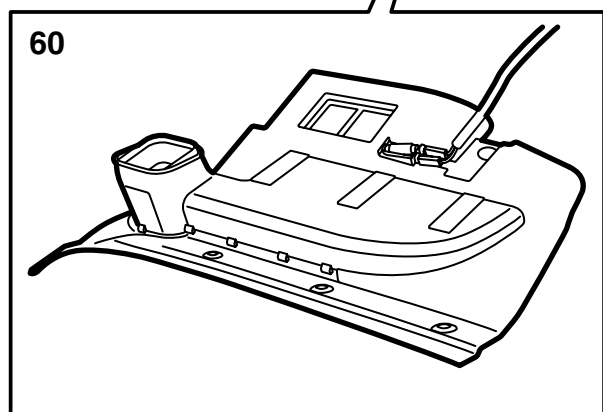
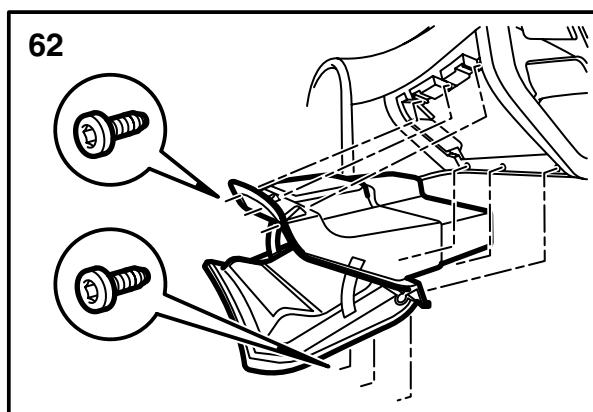
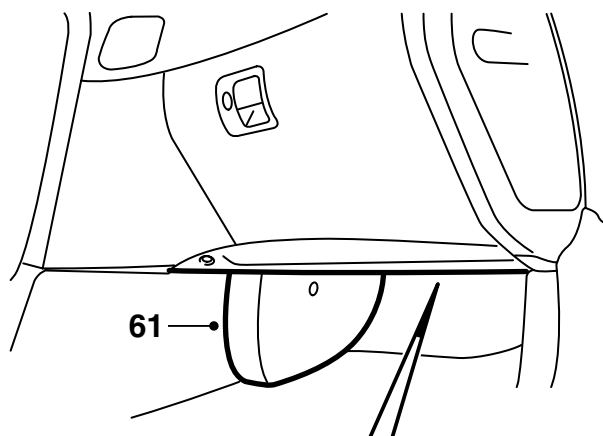
- 44 Remove the instrument plate screws, x 6.
- 45 Undo the instrument plate. The instrument plate is secured with 4 clips.
- 46 Detach the connector from the hazard flashers' switch.
- 47 Undo the antenna cable from the radio compartment.
- 48 Remove the connector from the radio compartment.



- 49 Remove the gaiter by the steering wheel.
- 50 Remove the main instrument unit screws.
- 51 Fold the main instrument unit backward.
- 52 Remove the connector from the main instrument unit.
- 53 Lift out the main instrument unit.
- 54 Remove the driver airbag connector.

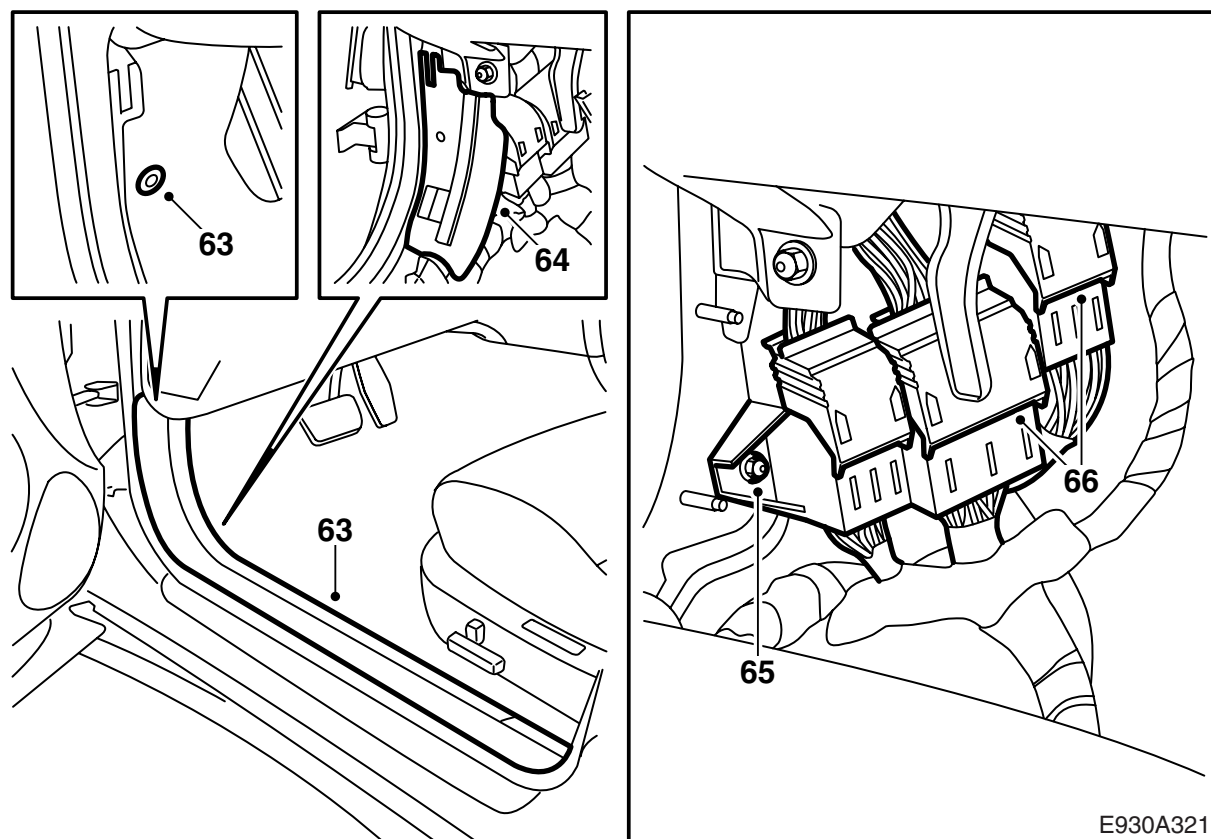


- 55 Undo the data link connector screws.
- 56 Remove the sound insulation panel on the driver's side.
- 57 Undo the fuse box screws.
- 58 **LHD:** Remove and unplug the brown 33-pin connector located on the console for DICE.
- 59 **RHD:** Remove and unplug the brown 33-pin connector, to the left and up in front of the A-pillar. (On cars with RHD the brown connector is not located on the console for DICE).

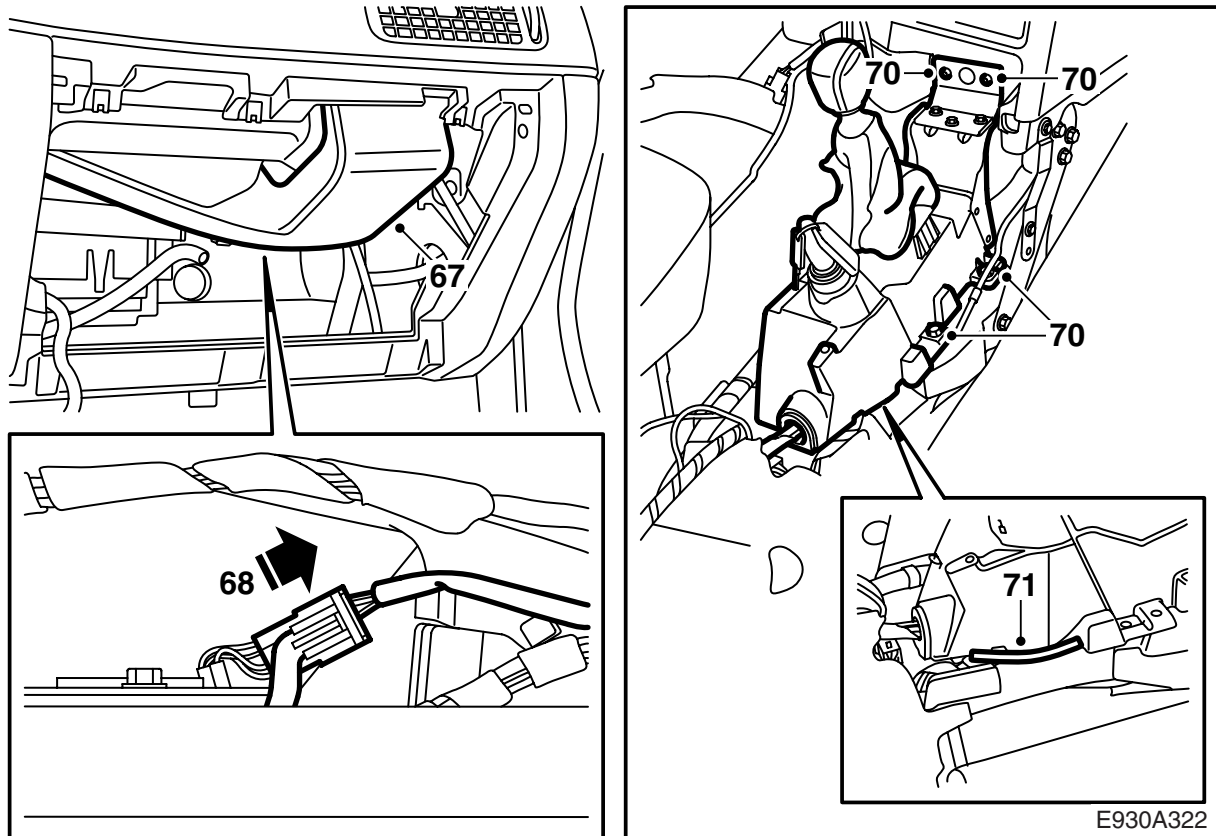


E930A320

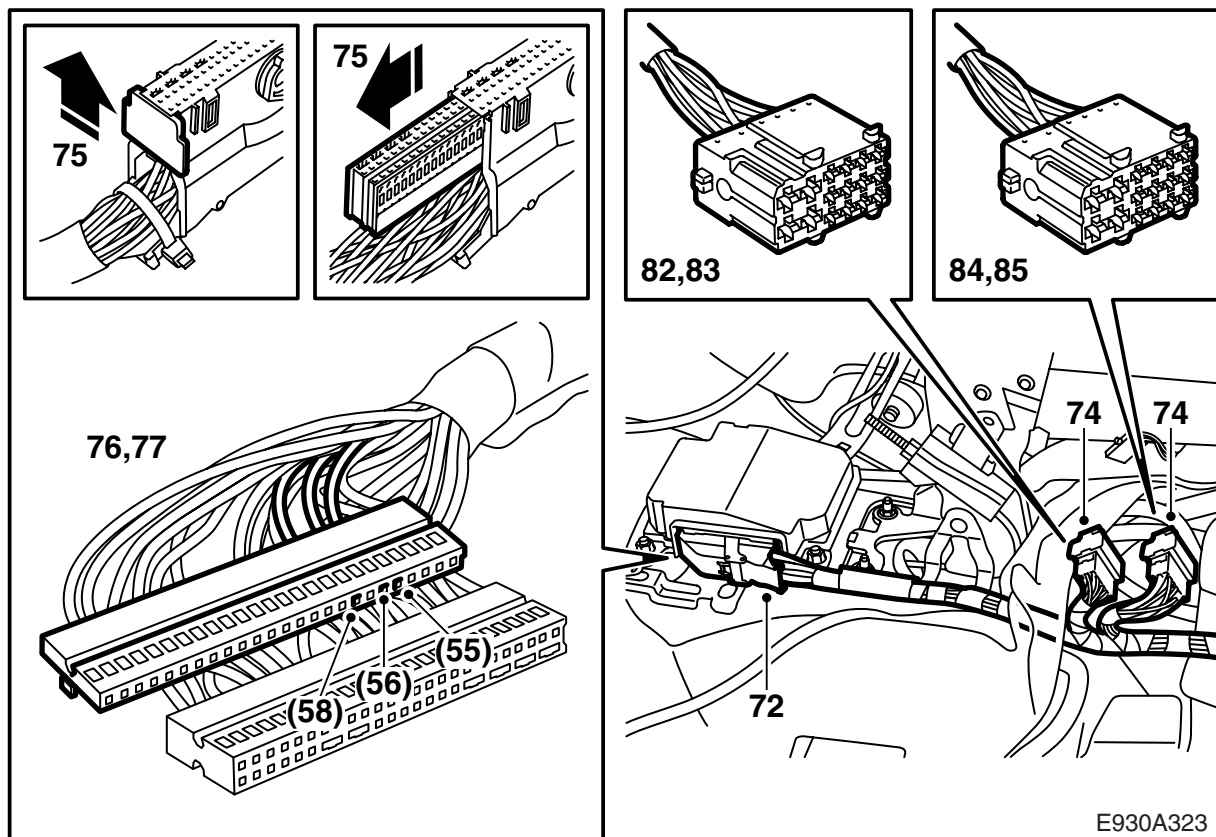
- 60 Remove the connector from the lamp and remove the sound insulation panel under the glove box.
- 61 Remove the cover in front of the A/C lines.
- 62 Detach the connector for the lighting and the coolant hose and remove the glove box.



- 63 Remove the left-hand scuff plate and fold away the carpet from the A-pillar
- 64 Remove the connector plate covers.
- 65 Detach the bracket, with white, green and blue connectors, from the wall in front of the A-pillar.
- 66 Detach the green 80-pin and the white 43-pin connectors.

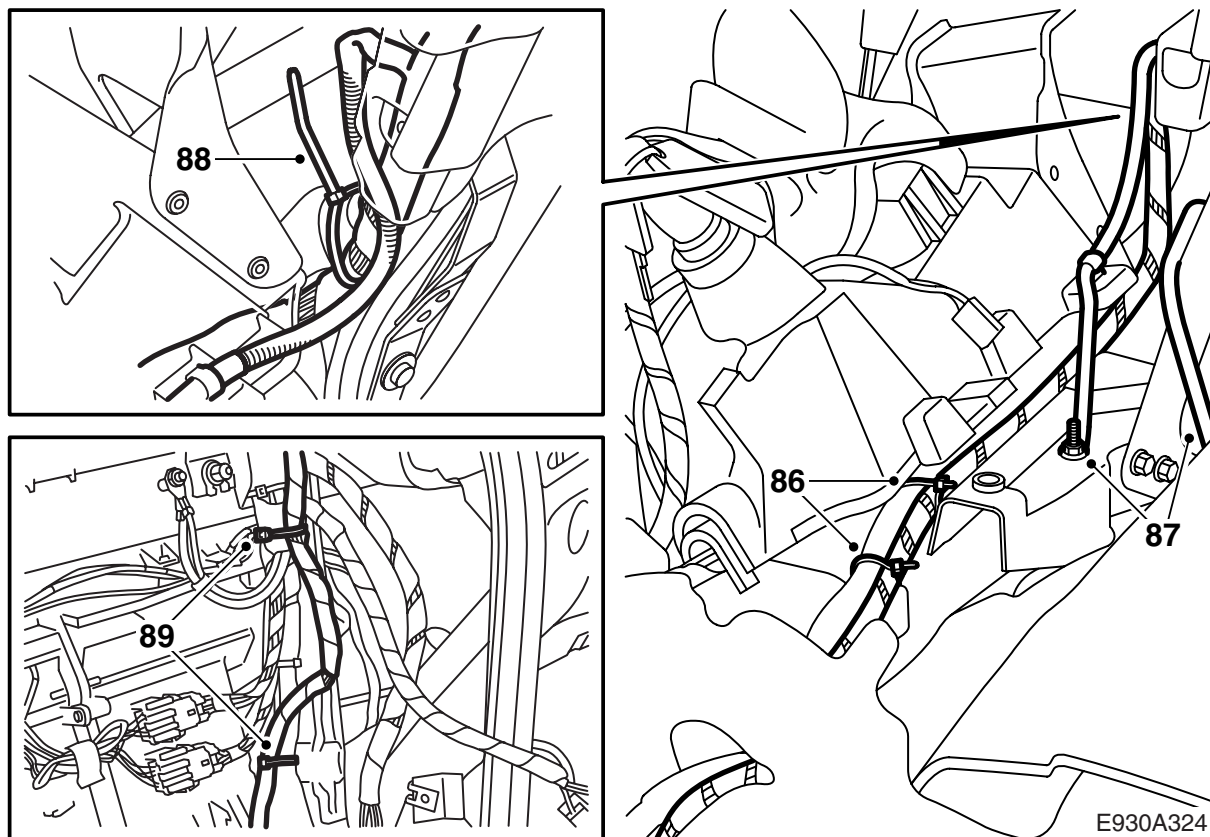


- 67 Remove the air duct in front of the passenger airbag.
- 68 Remove the passenger airbag connector.
- 69 **AUT:** In order to access the gear lever housing screws more easily, remove the 6-pin connector.
- 70 Undo the gear lever housing.
- 71 Fit Chafing guard, 82 78 558 (90 mm), on the lower edge of the gear lever housing, where the wiring harness runs in under the gear lever housing.



- 72 Remove the old connector from the SRS unit.
- 73 Position a spare parts harness alongside the normal harness starting at the SRS unit. The harness is placed under the normal harness at the gear lever housing.
AUT: The wiring harness is placed under the selector lever's plastic console.
- 74 Separate the two 16-pin connectors (Black and Grey) which are located under the carpet, behind the gear lever housing.
- 75 Cut off the cable tie, undo the connector rear end plate, draw out the circuit rail from the connector which is located by the SRS unit.
- 76 Extract pin 55 (Green) and 56 (White) from the old connector.
- 77 If the car is equipped with OnStar then pin 58 (White) must also be extracted from the old connector.
- 78 Fit in corresponding positions in the new connector.
- 79 Cut off the remaining cables to the old connector and insulate the cables.
- 80 Press in the circuit rail in the new connector and fit the end plate.
- 81 Fit a new connector to the SRS unit and secure the wiring with a cable tie.
- 82 Remove the secondary lock and extract pin no. 2 (Red/White), 3 (Green) and 4 (White) from the black 16-pin connector which is located immediately behind the gear lever housing.

- 83 Fit corresponding wiring to the new harness. Refit the secondary lock.
- 84 Remove the secondary lock and extract pin no. 1 (Green), 2 (Brown), 3 (Blue/White) and 4 (Red/White) from the grey 16-pin connector which is located immediately behind the gear lever housing.
- 85 Fit corresponding wiring to the new harness. Refit the secondary lock.



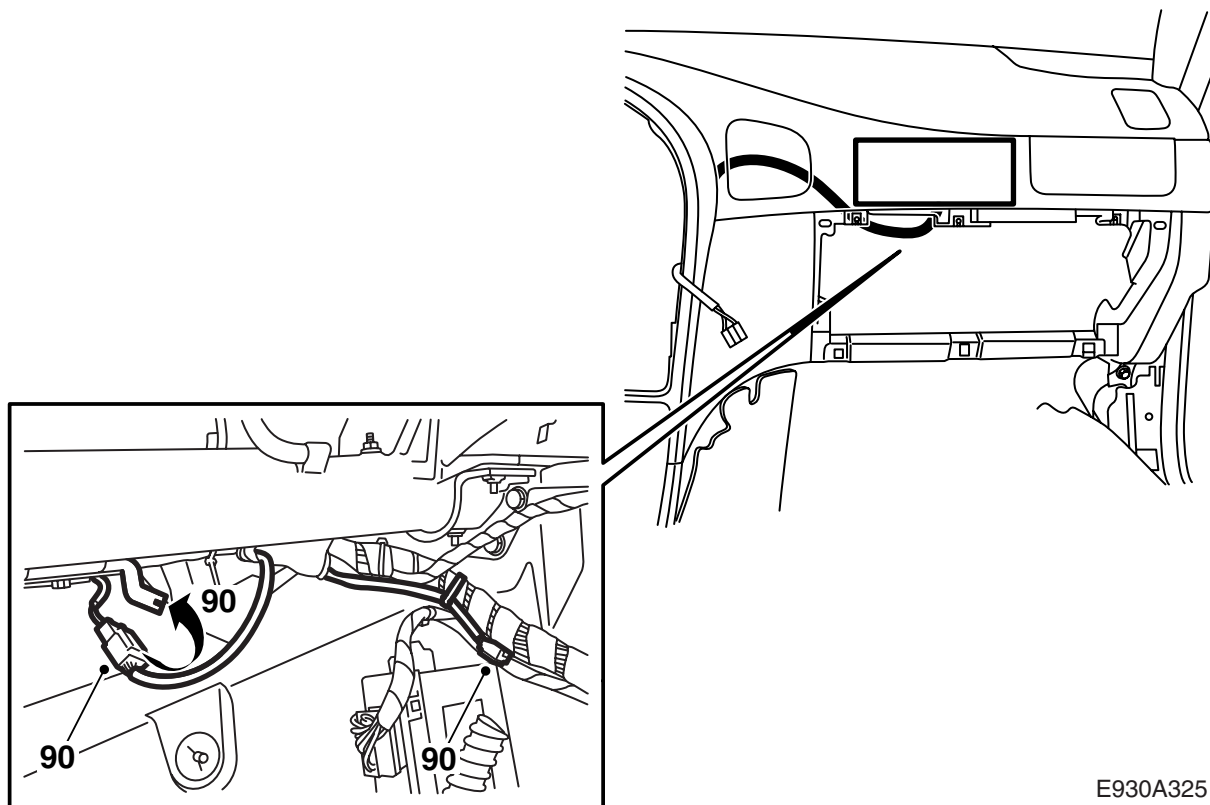
86 Secure the wiring harness with cable ties under the gear lever housing, along the normal harness. Check that there is no risk of chafing.

87 Unscrew the old ground cable by the gear lever housing, insulate the ground cable and secure it with cable ties. Connect and torque tighten the new ground cable to the grounding point.

Tightening torque 9.5 Nm (7 lbf ft)

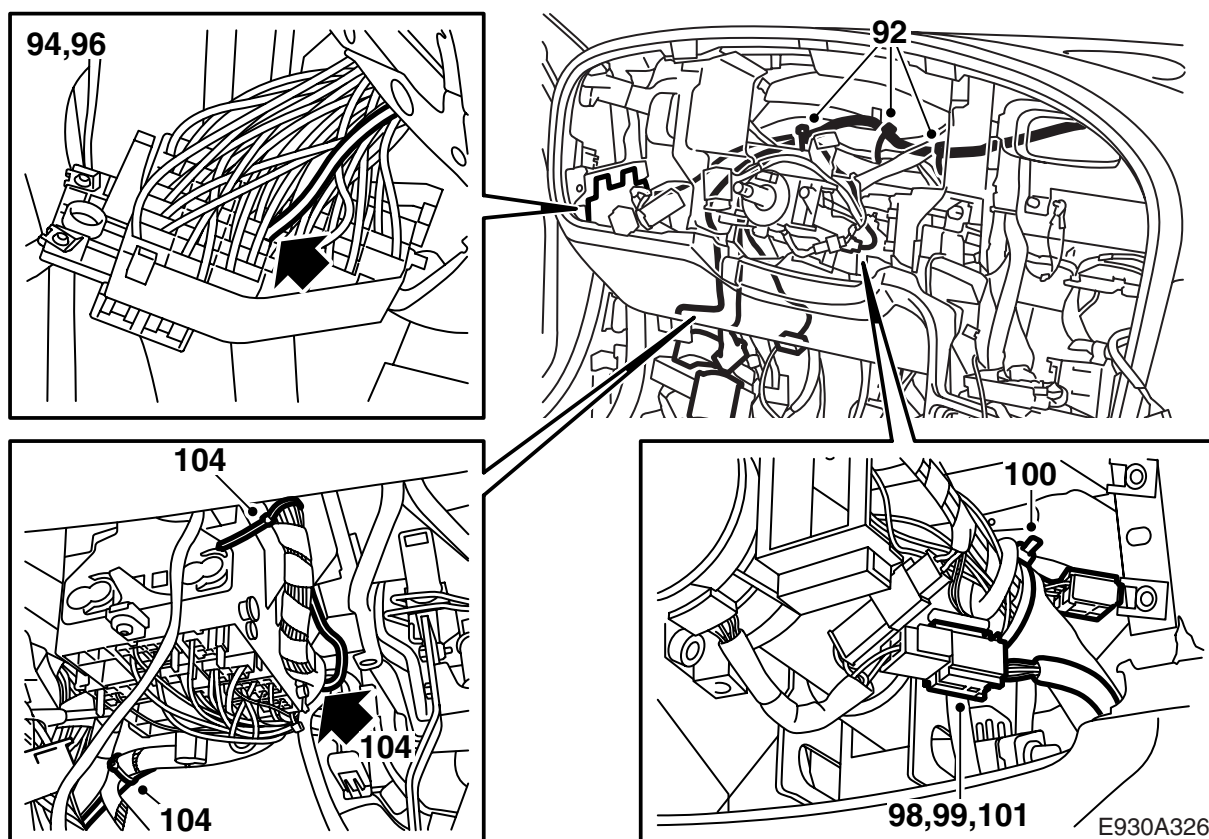
88 **LHD:** Branch off the harness, follow the normal harness up under the panel shell and secure with cable ties.

89 **LHD:** Position the wiring harness branch, which runs to the passenger airbag, alongside the normal harness and secure with cable ties.

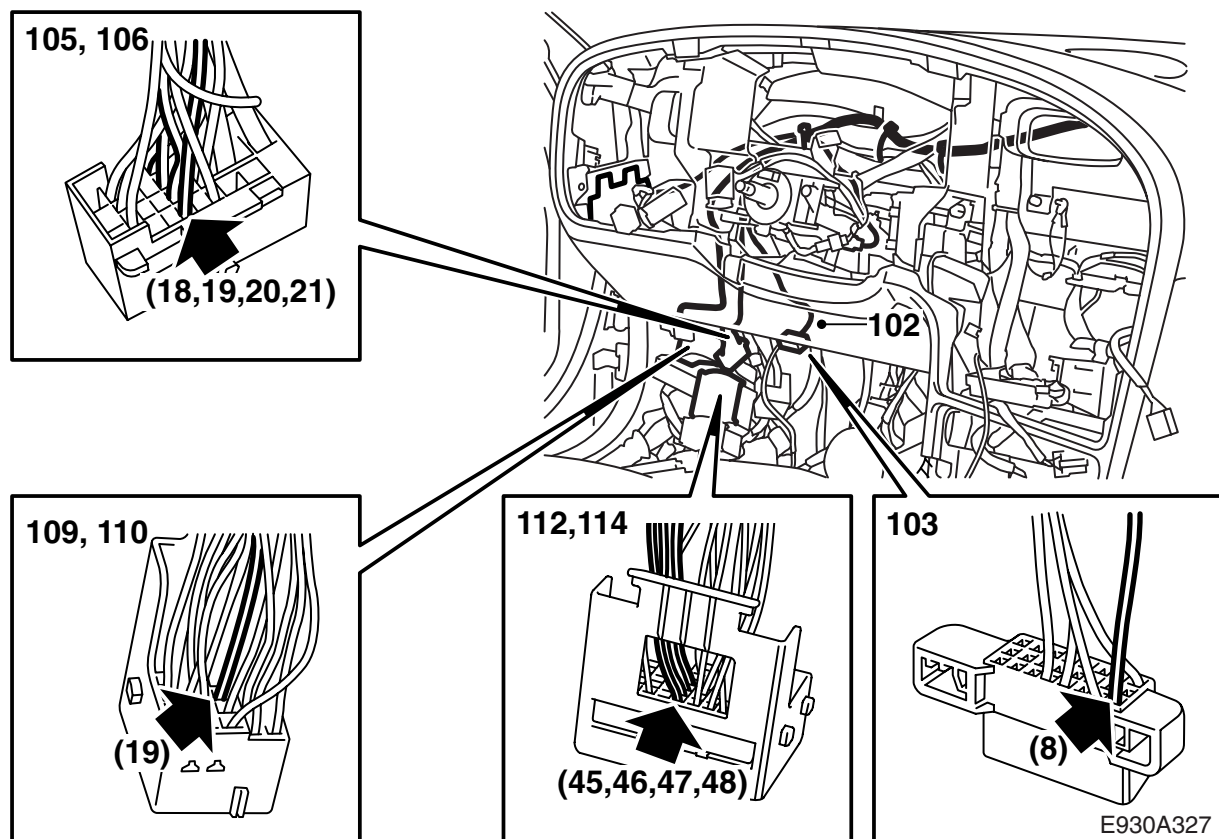


E930A325

- 90 **LHD:** Connect the new connector to the passenger airbag wiring harness. Ensure that the risk of chafing does not arise. Secure the old connector with cable ties.
- 91 **LHD:** If there is no passenger airbag then the remaining wiring is secured to the harness.



- 92 **LHD:** Position the wiring harness branch, which runs to the data link connector, fuse box and driver's airbag connector, alongside the normal harness and secure with cable ties.
- 93 **LHD:** Align the wiring harness against the A-pillar and secure with cable ties.
- 94 **LHD:** Extract the Red/Blue wiring (to fuse 28), which was earlier recorded as being not live, from the fuse box.
- 95 **LHD:** Insulate and secure the old wiring.
- 96 **LHD:** Fit the new Red/Blue wiring in the fuse box, no. 28, and fit the fuse.
- 97 **LHD:** Secure the wiring alongside the normal wiring and ensure that the risk of chafing does not arise.
- 98 **LHD:** Set out the harness towards the wiring to the driver's airbag.
- 99 **LHD:** Secure the wiring and ensure that the steering wheel can be adjusted without problem.
- 100 **LHD:** Insulate the driver airbag's old wiring and secure.
- 101 **LHD:** Connect the driver airbag connector, secure the wiring alongside the normal harness. Ensure that the risk of chafing does not arise.



102LHD: Align the green wiring to the data link connector and secure.

103LHD: Extract the old green wiring, no. 8, from the data link connector and fit the new wiring. Secure the wiring, with tape, alongside the normal harness.

104LHD: Position the wiring harness down towards the connector bracket (166-pin connector), which is located down by the A-pillar. The harness must be routed behind the relay box. Secure and check that there is no risk of chafing.

105LHD: Extract the brown 33-pin connector no. 18 (Blue), 19 (Grey/White), 20 (Green) and 21 (White).

106LHD: Fit to corresponding positions from the new harness.

107LHD: Cut off the old wiring and insulate.

108LHD: Separate the white and the green connector. Cut off the cable ties so that the wiring is accessible.

109LHD: Take the secondary locking catch out from the white 43-pin connector, extract position no. 19. Tape up the cable against the normal harness.

110LHD: Fit the new wiring (Green) in position no.19 and refit the secondary lock.

111 LHD: Secure the new wiring so that the risk of chafing does not arise.

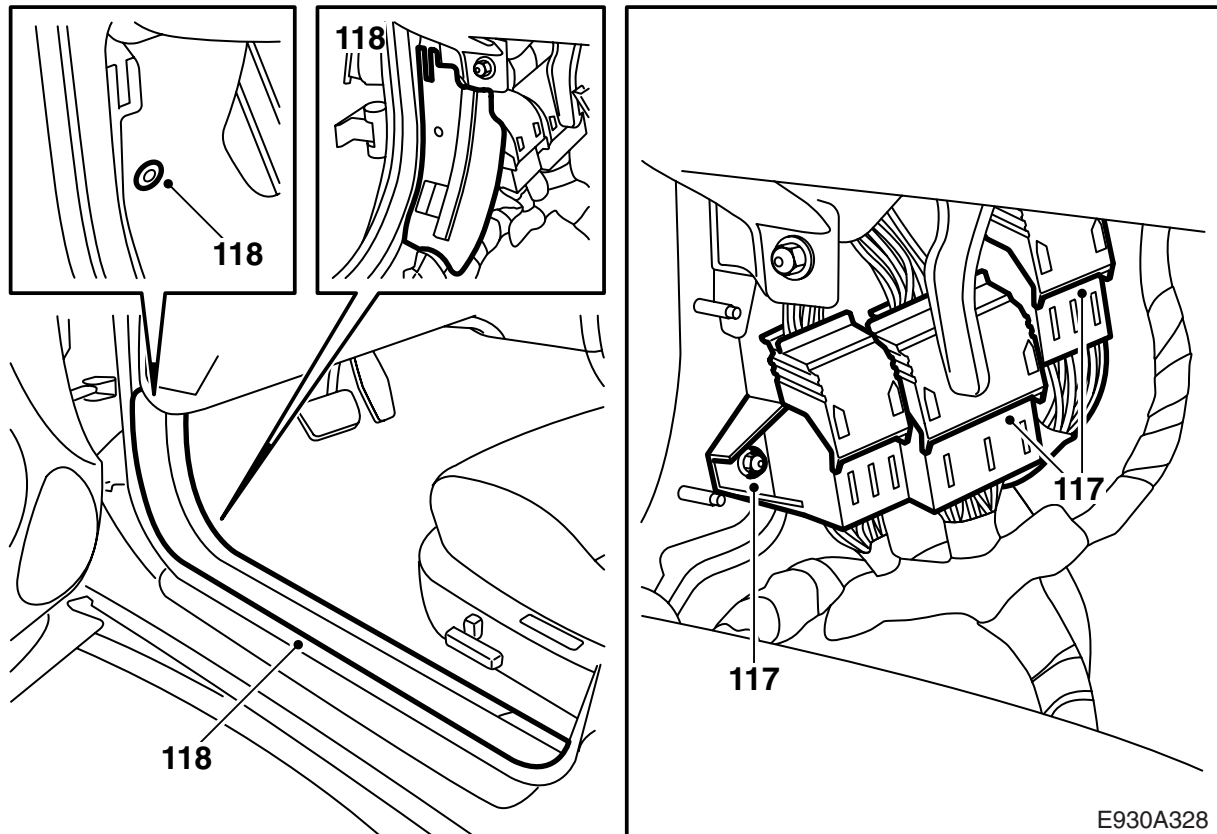
112LHD: Take the secondary locking catch out from the green 80-pin connector and extract no. 45 (Brown/Yellow), 46 (Red/Yellow), 47 (Blue/Green), and 48 (Yellow-Blue).

113LHD: Insulate and secure the old wiring alongside the harness.

114LHD: Fit the new wiring, no. 45 (Brown/Yellow), 46 (Red/Yellow), 47 (Blue/Green), 48 (Yellow/Blue), refit the secondary lock.

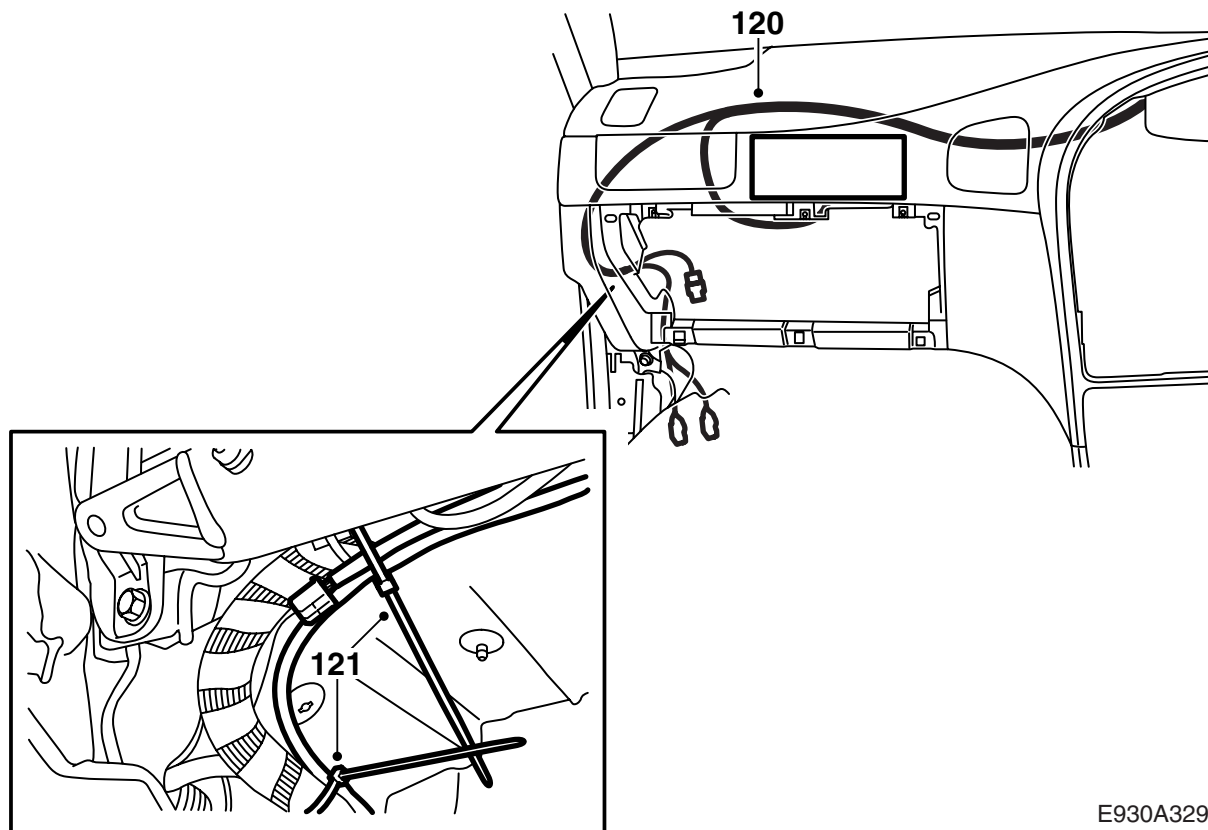
115LHD: Secure and tape so that the risk of chafing does not arise.

116LHD: Secure the wiring harnesses with new cable ties to the relevant connectors.



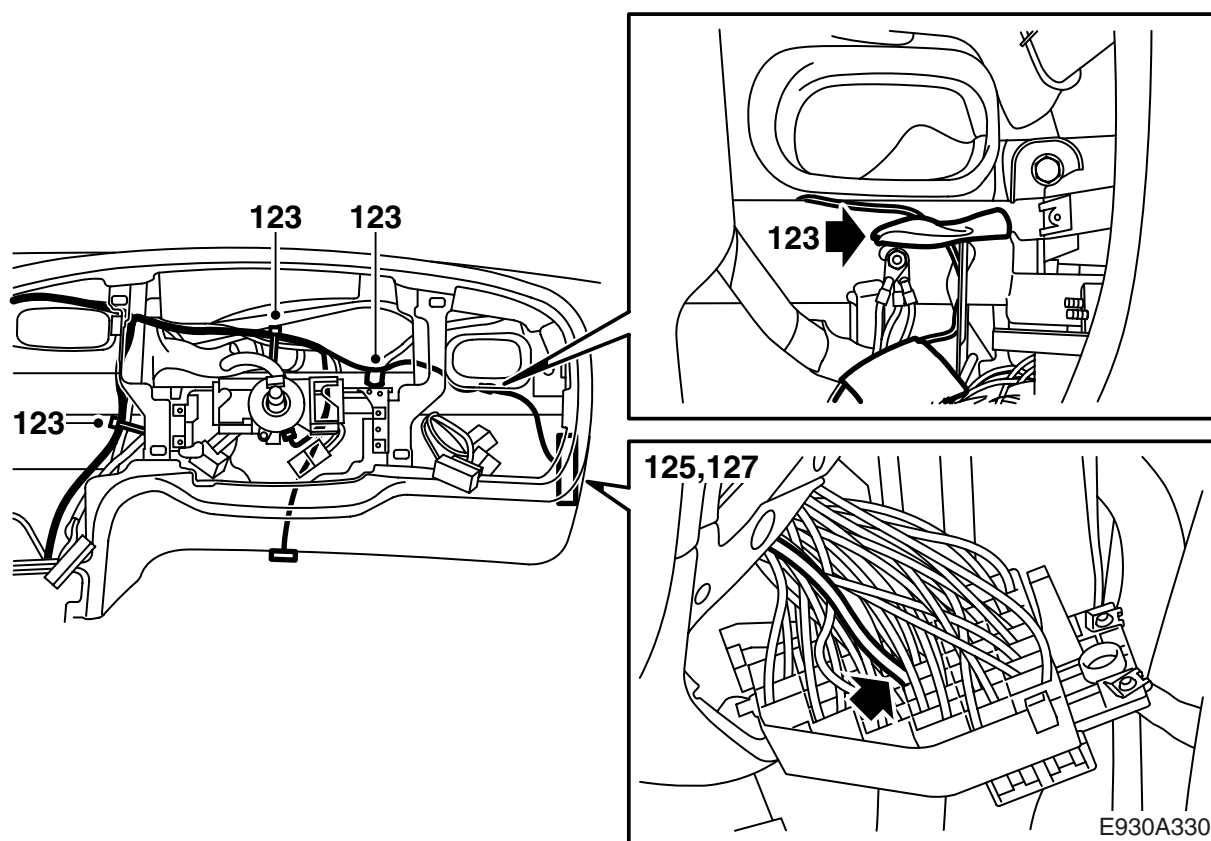
117LHD: Fit the connectors and screw back the bracket that holds the connector.

118LHD: Fit the connector plate covers. Fold the carpet into place and fit the scuff plate.



E930A329

- 119**RHD**: Branch off the harness, follow the normal harness up under the panel shell and secure with cable ties.
- 120**RHD**: Position the wiring harness branch, which runs to the passenger airbag, alongside the normal harness and secure with cable ties.
- 121**RHD**: Connect the new connector to the passenger airbag wiring harness. Ensure that the risk of chafing does not arise. Secure the old connector with cable ties.
- 122**RHD**: If there is no passenger airbag then the remaining wiring is secured to the harness.



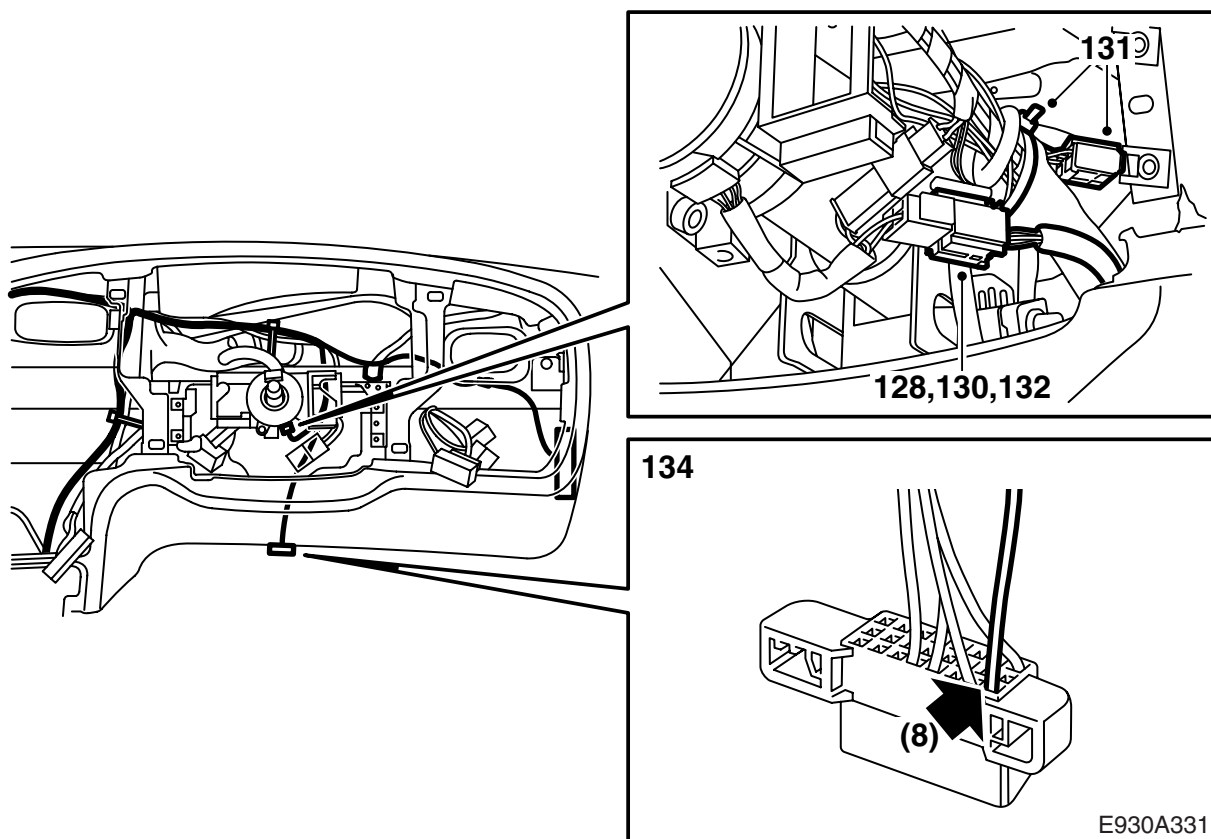
123RHD: Position the wiring harness branch, which runs to the data link connector, fuse box and driver's airbag connector, alongside the normal harness and secure with cable ties.

124RHD: Follow the normal harness.

125RHD: Extract the Red/Blue wiring (to fuse 28), which was earlier recorded as being not live, from the fuse box.

126RHD: Insulate and secure the old wiring.

127RHD: Fit the new Red/Blue wiring in the fuse box, no. 28, and fit the fuse.



128RHD: Secure the wiring alongside the normal wiring and ensure that the risk of chafing does not arise.

129RHD: Set out the harness towards the wiring to the driver's airbag.

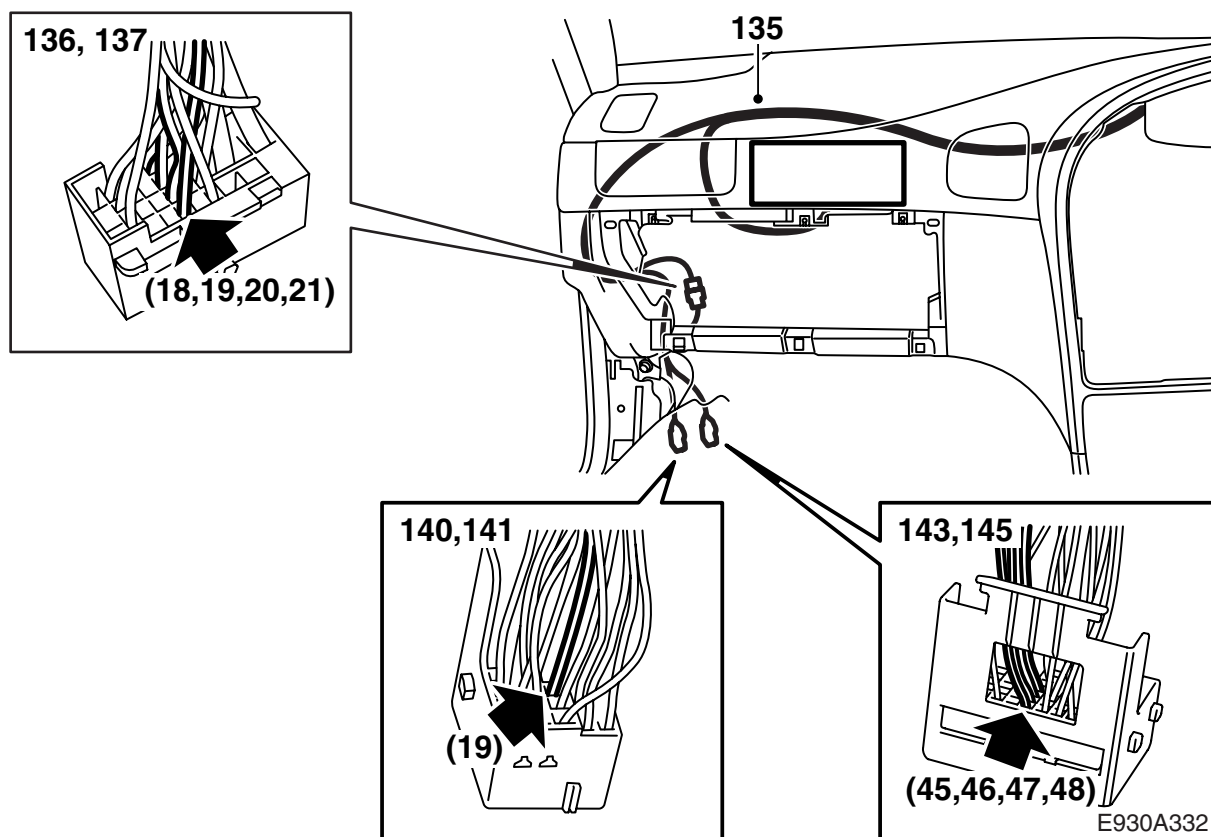
130RHD: Secure the wiring and ensure that the steering wheel can be adjusted without problem.

131RHD: Insulate the driver airbag's old wiring and secure.

132RHD: Connect the driver airbag connector, secure the wiring alongside the normal harness. Ensure that the risk of chafing does not arise.

133RHD: Align the green wiring to the data link connector and secure.

134RHD: Extract the old green wiring, no. 8, from the data link connector and fit the new wiring. Secure the wiring, with tape, alongside the normal harness.



135RHD: Position the wiring harness down towards the connector bracket (166-pin connector), which is located down by the A-pillar. The harness must be routed behind the relay box. Secure and check that there is no risk of chafing.

136RHD: Extract the brown 33-pin connector no. 18 (Blue), 19 (White), 20 (Green) and 21 (White).

137RHD: Fit to corresponding positions from the new harness.

138RHD: Cut off the old wiring and insulate.

139RHD: Separate the white and the green connector. Cut off the cable ties so that the wiring is accessible.

140RHD: Take the secondary locking catch out from the white 43-pin connector, extract position no. 19. Tape up the cable against the normal harness.

141RHD: Fit the new wiring (Green) in position no. 19 and refit the secondary lock.

142RHD: Secure the new wiring so that the risk of chafing does not arise.

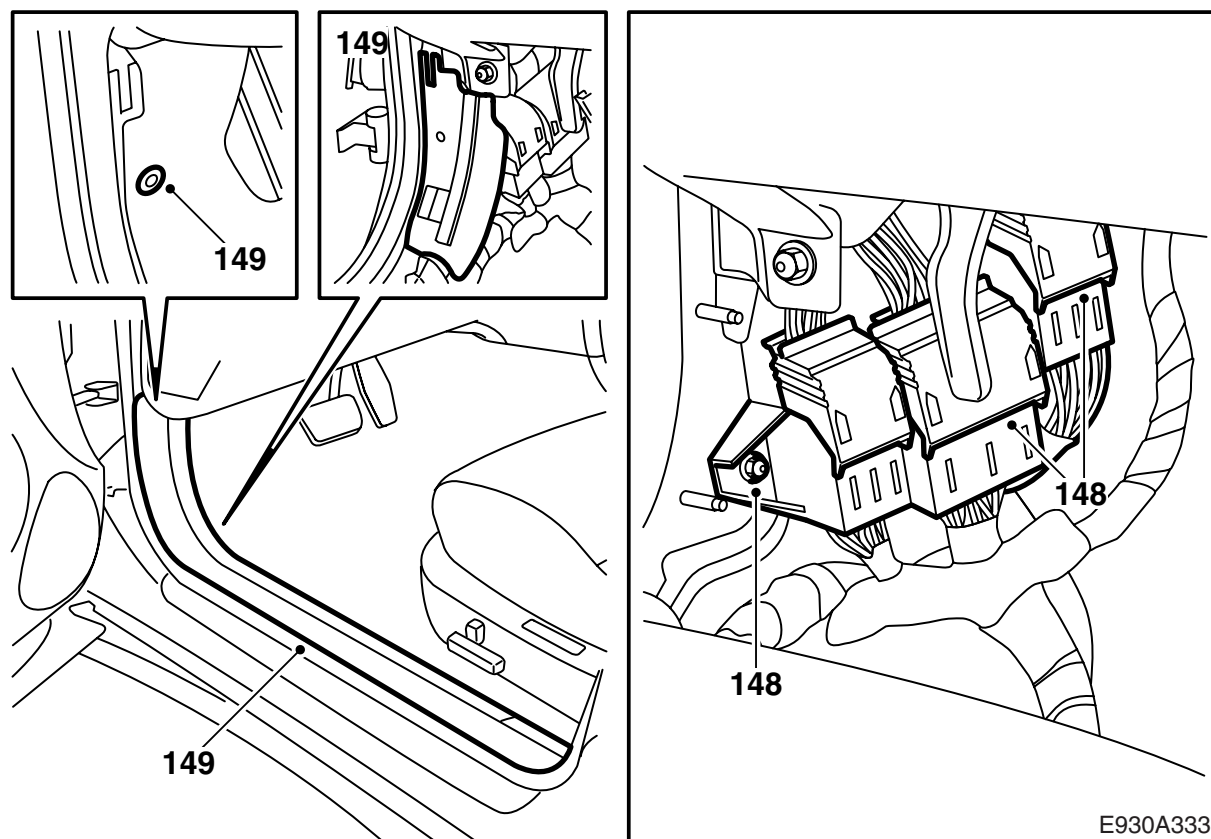
143RHD: Take the secondary locking catch out from the green 80-pin connector and extract no. 45 (Brown/Yellow), 46 (Red/Yellow), 47 (Blue/Green), and 48 (Yellow-Blue).

144RHD: Insulate and secure the old wiring alongside the harness.

145RHD: Fit the new wiring, no. 45 (Brown/Yellow), 46 (Red/Yellow), 47 (Blue/Green), 48 (Yellow/Blue), refit the secondary lock.

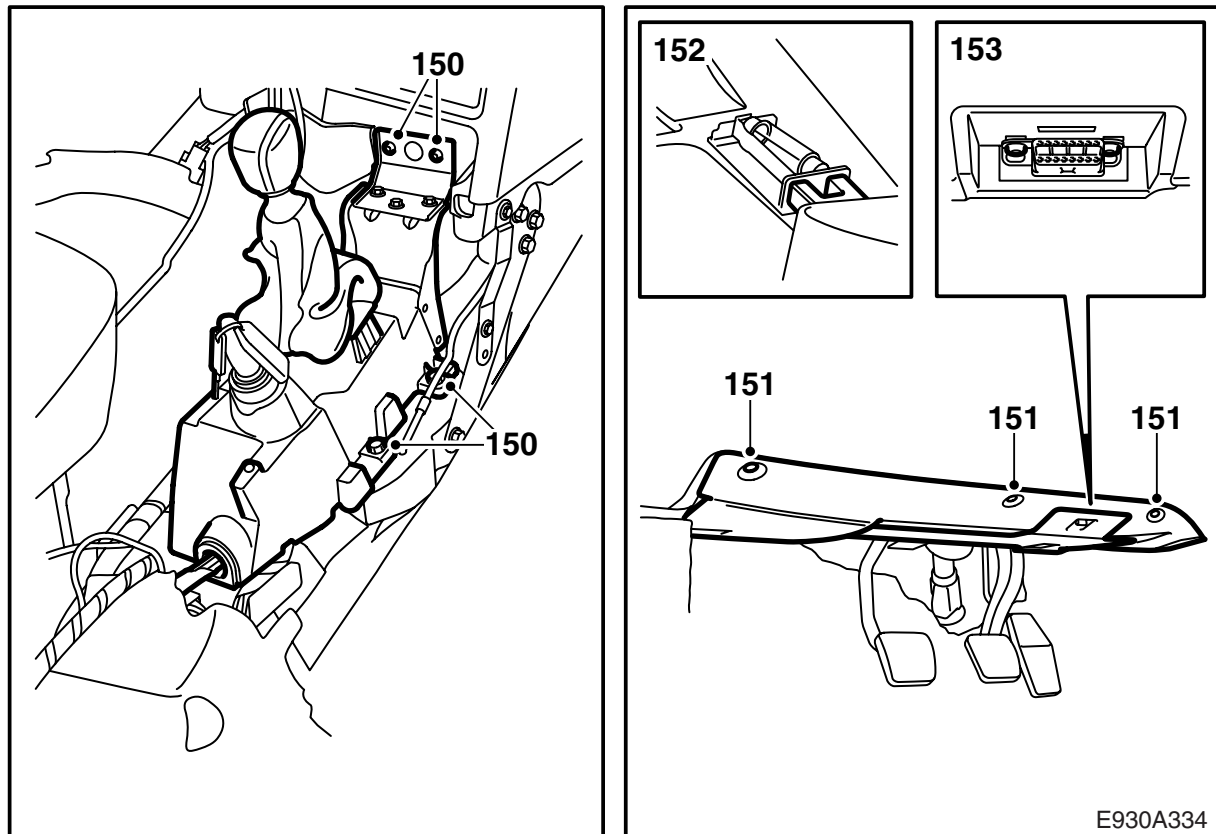
146RHD: Secure the wiring with tape so that the risk of chafing does not arise.

147RHD: Secure the wiring harnesses with new cable ties to the relevant connectors.



148RHD: Fit the connectors and screw back the bracket that holds the connectors.

149RHD: Fit the connector plate covers. Fold the carpet into place and fit the scuff plate.



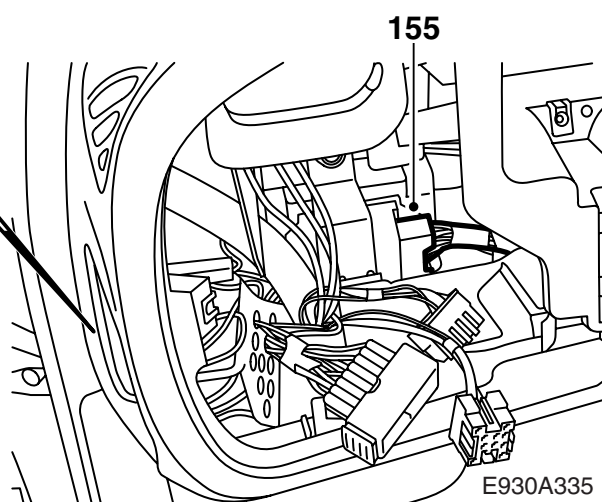
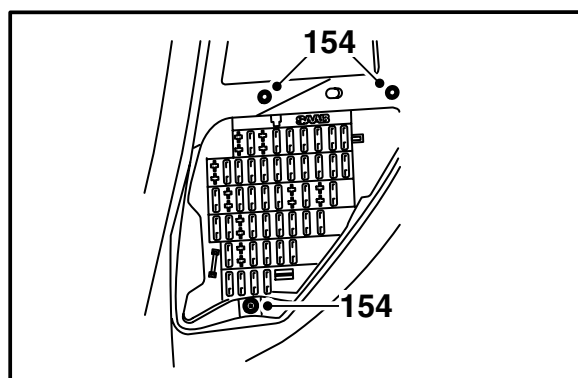
150 Fit the gear lever housing.

151 Fit the sound insulation panel on the driver's side.

AUT: Connect the 6-pin connector.

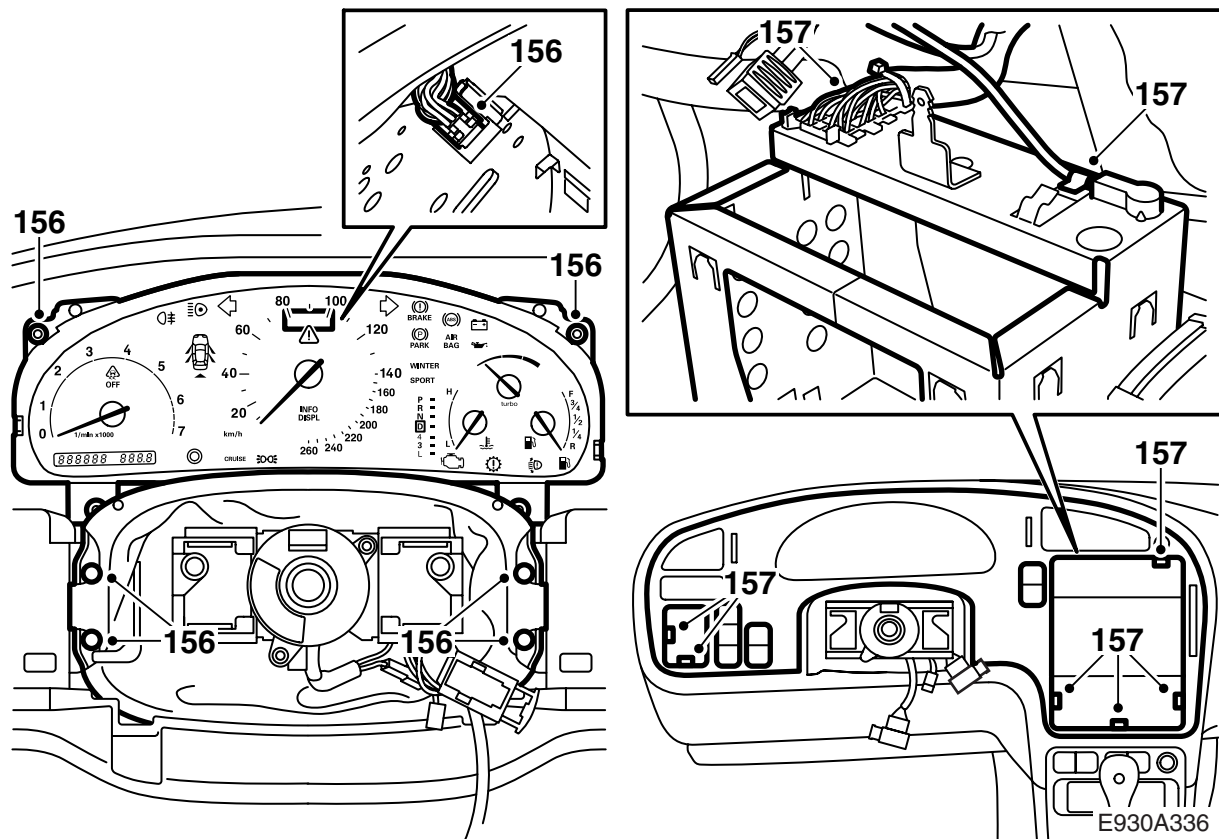
152 Connect the connector to the floor lighting.

153 Fit the data link connector.



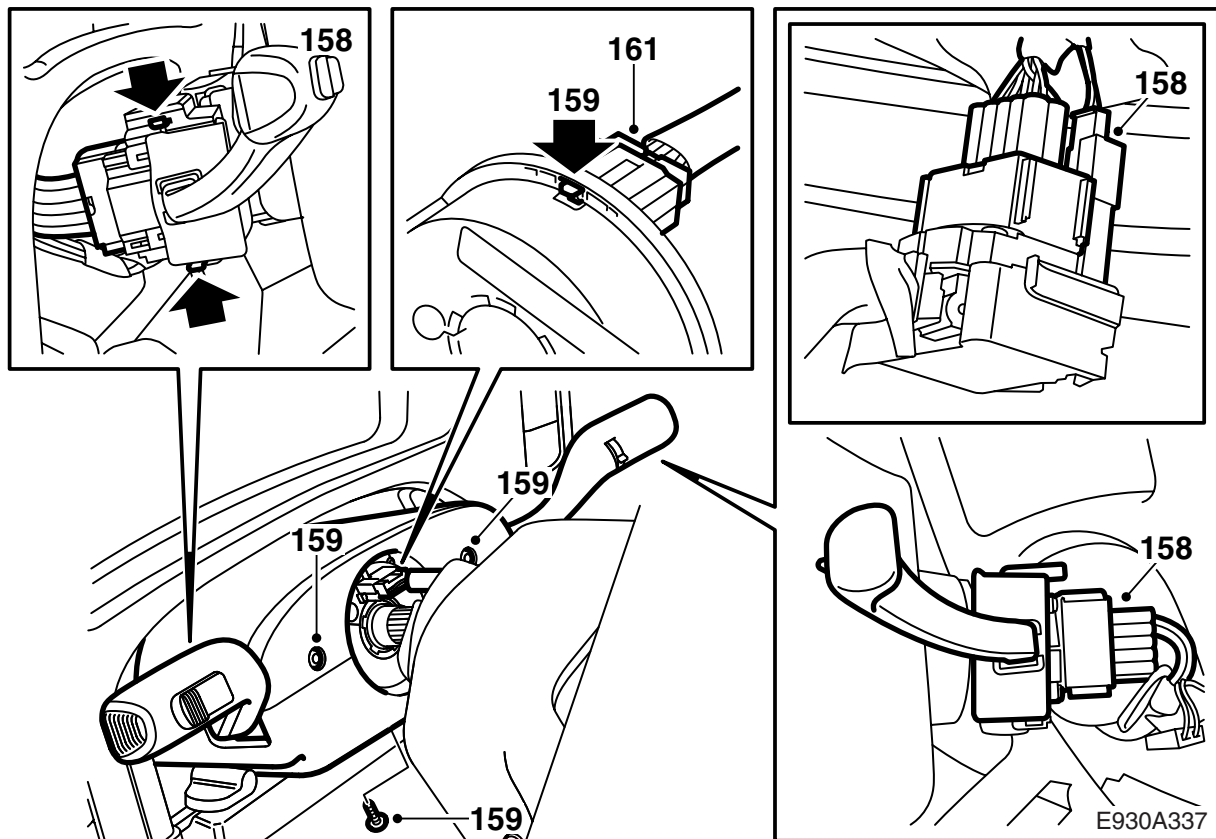
154 Fit the fuse box.

155 Connect and fit the brown 33-pin connector.



156 Fit the main instrument unit and the gaiter by the steering wheel.

157 Fit the instrument plate with switch. Connect the connectors and the connection to the radio antenna. Remove the radio compartment for better access.



158 Connect the connectors and fit the steering wheel switches.

159 Fit the steering wheel covers.

⚠ WARNING

Check that the wiring to the contact roller is not twisted.

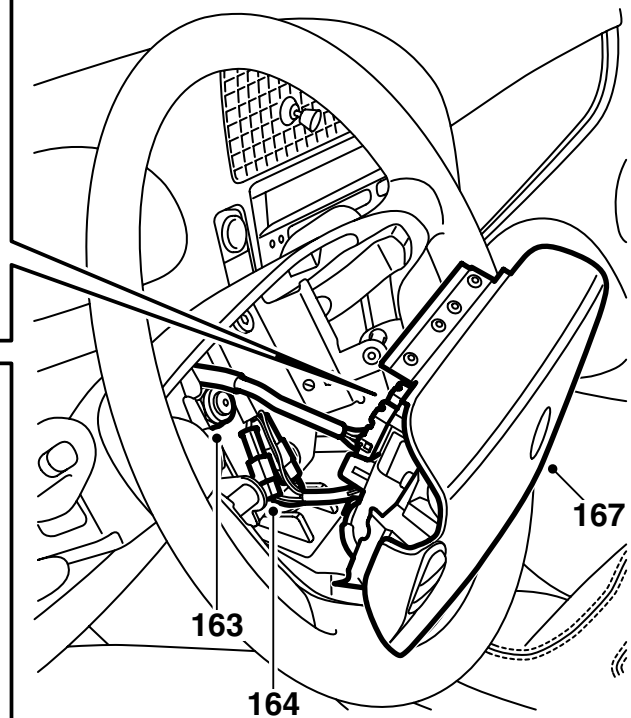
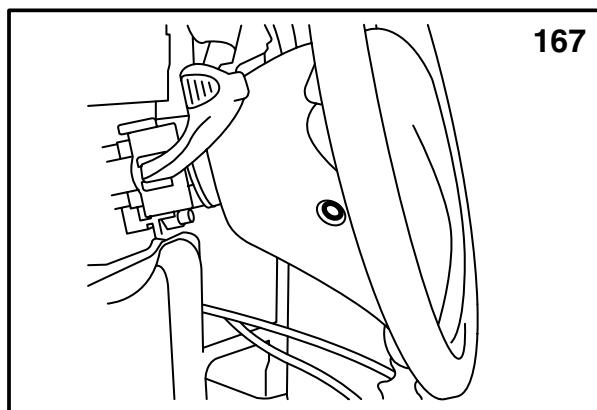
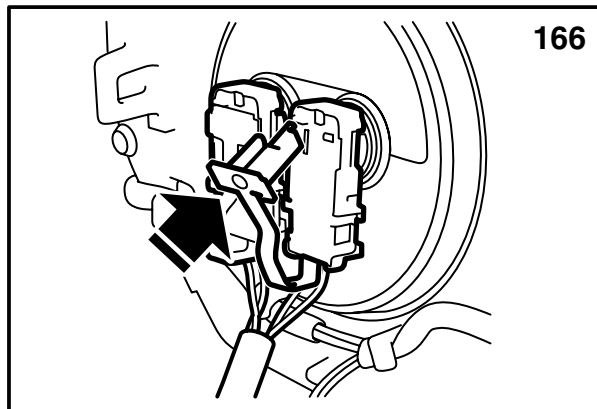
160 Set the steering wheel on the steering shaft.

⚠ WARNING

Make sure that the hole in the steering wheel passes over the contact roller connector and that the steering shaft key fits in the steering wheel. Incorrect fitting of the contact roller connector can cause faults in the airbag system.

161 Connect the connector to the contact roller before the steering wheel is pressed fully into place.

162 Press the steering wheel into place.



E930A340

163 Fit and torque tighten the steering wheel nut.

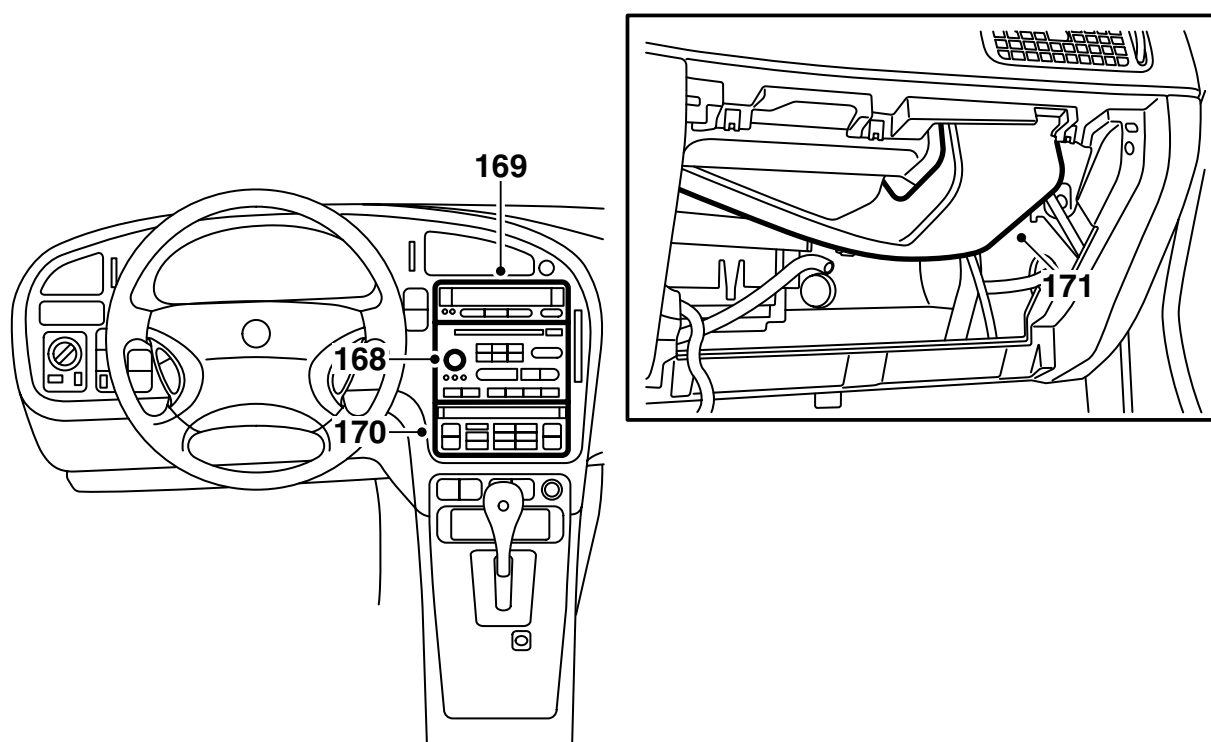
Tightening torque 39 Nm (28.8 lbf ft)

164 Connect the horn and, if fitted, audio system connector.

165 Fit the connectors to the velcro bracket.

166 Connect the driver airbag electrical connections at the back. Check the locking of the connectors.

167 Fit the driver's airbag to the steering wheel, 2 screws and plugs.



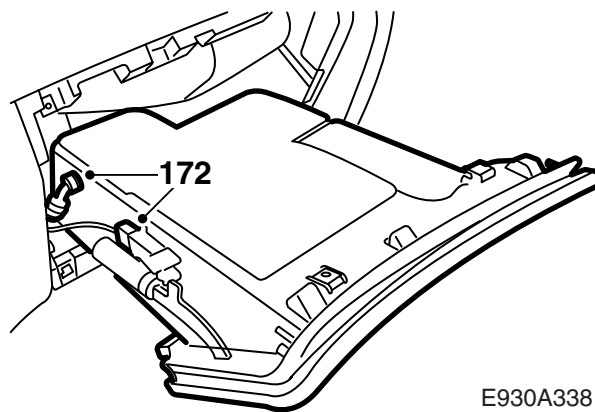
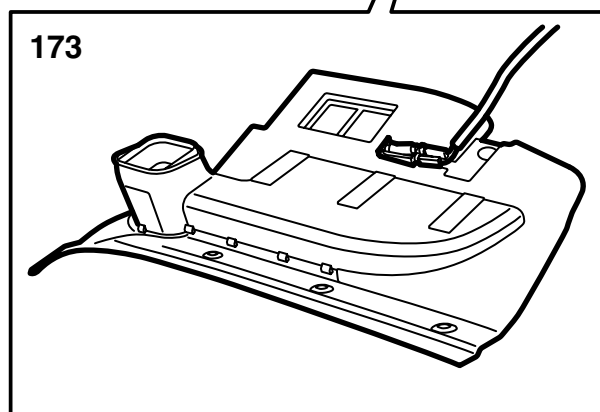
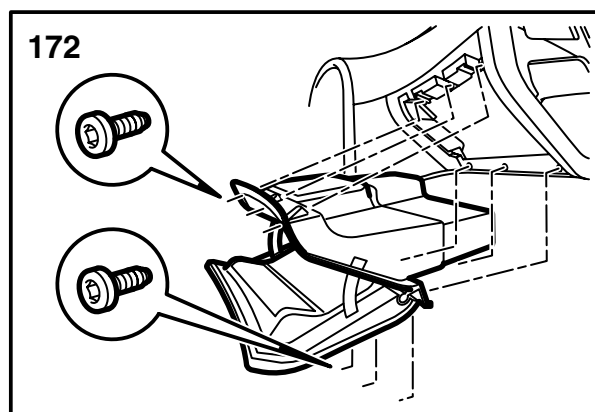
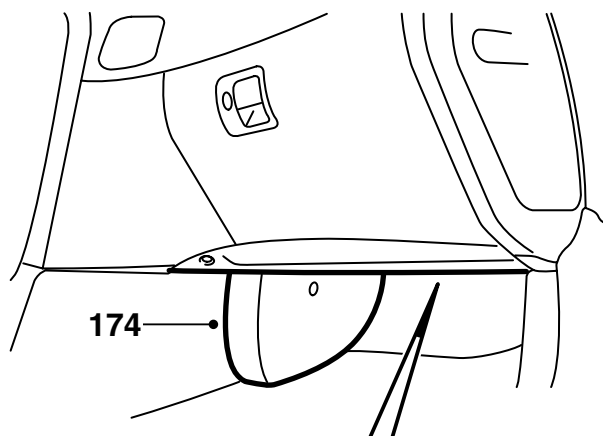
E930A341

168 Fit the radio unit.

169 Fit SID

170 Fit the ACC unit.

171 Fit the air duct in front of the passenger airbag.

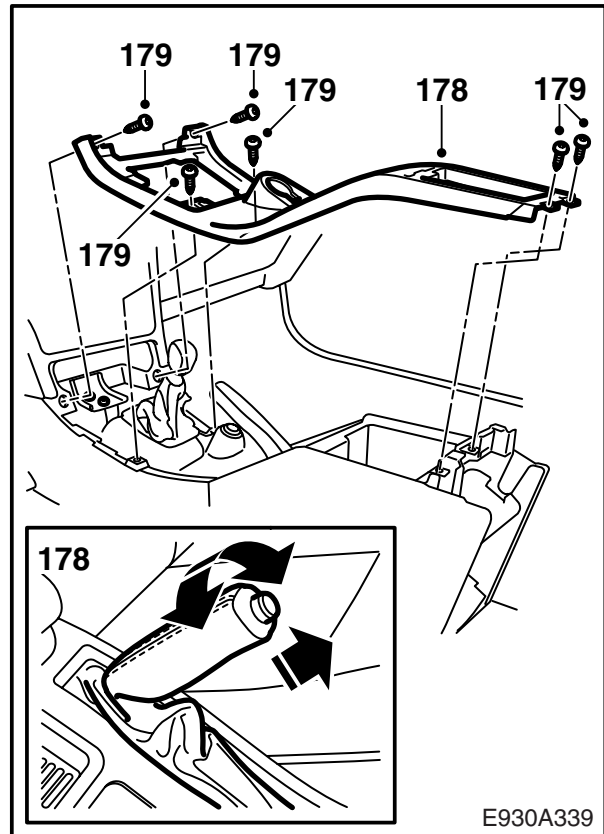
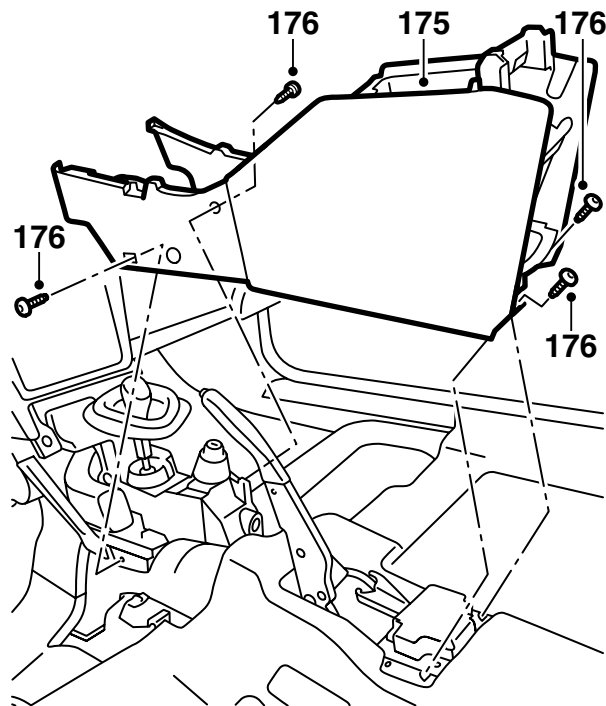


E930A338

172 Fit the glove box.

173 Connect the connector to the lamp and fit the sound insulation panel under the glove box.

174 Fit the carpet and the cover over the A/C lines.



E930A339

175 Lift the centre console into place.

176 Screw the centre console securely front and rear, 4 screws. Start with the left-hand front which is governing.

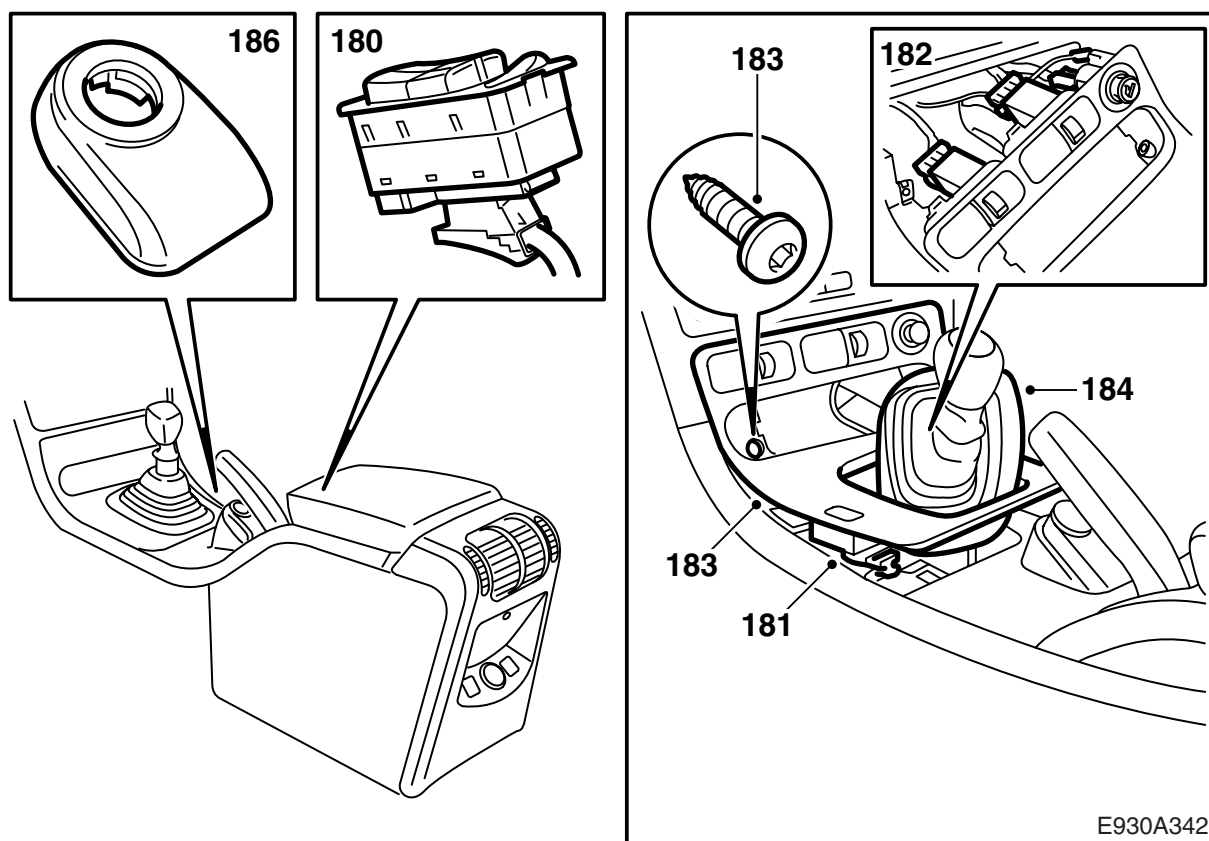
177 Fold up the carpets.

178 Lift back the centre console upper section. At the same time carefully guide the wiring into place. Be careful with the wiring to the theft protection. Thread the handbrake cover into place.

Important

For manual transmission: Check that the gear lever gaiter and cables are not trapped.

179 Screw the centre console section securely, 6 screws.



180 Fit the electric window lift switches.

181 Connect the central locking system connector.

182 Connect the connectors for the switches for seat heating, seat ventilation and cigarette lighter.

Important

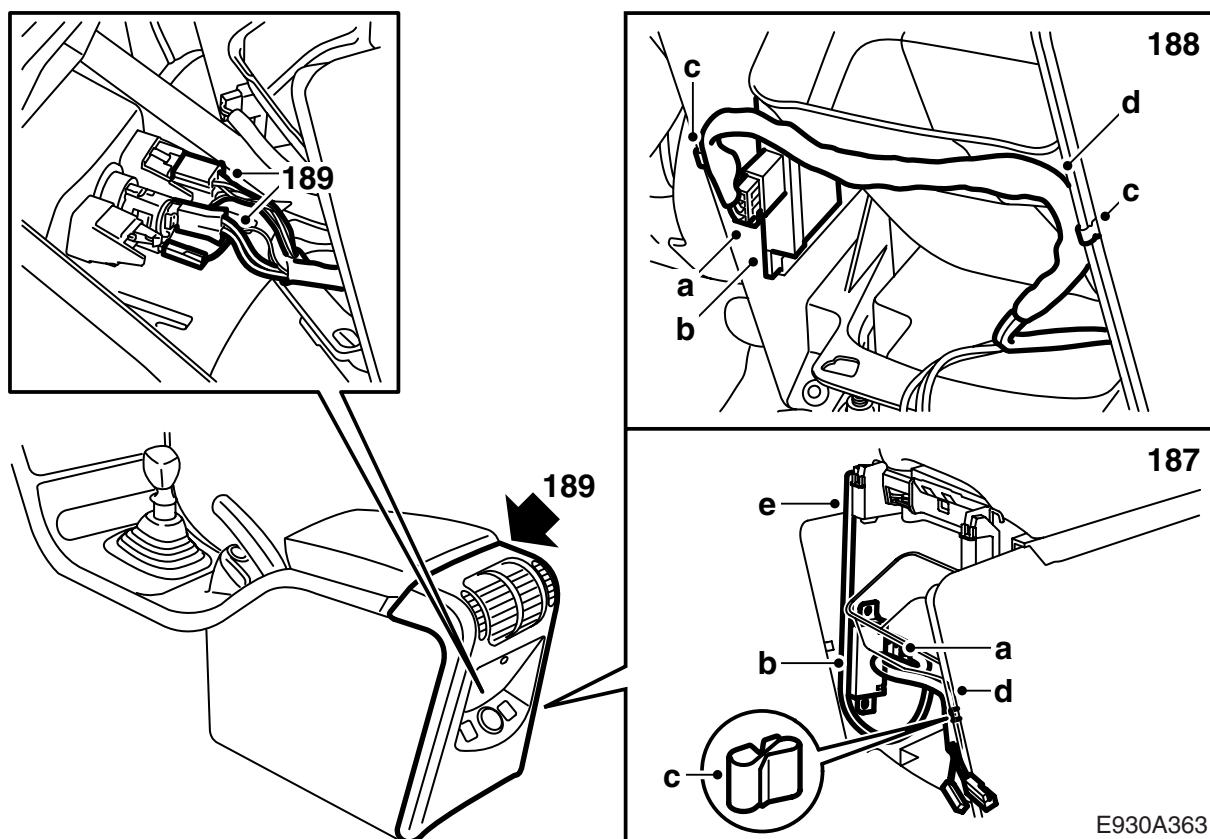
Be careful to connect the right connectors to the right switches.

183 Fit the gear lever cover, 2 clips in the rear edge and 2 screws in the front edge.

184 **Manual transmission:** Fit the gear lever gaiter.

185 **Automatic transmission:** Fit the rim around the gear lever housing.

186 Connect the connector in the theft protection antenna unit and fit it (bayonet fitting).

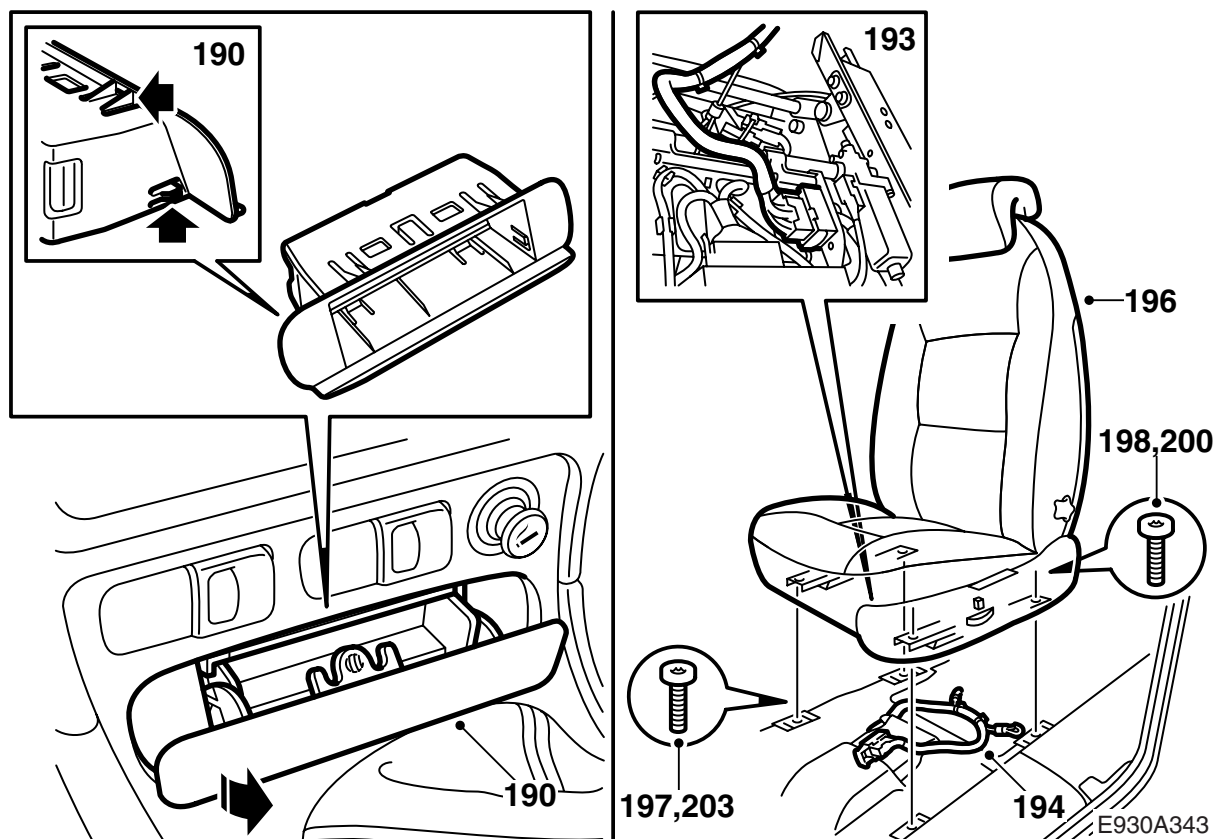
**187Market JP:**

- a Attach the connector to the central locking system's remote control receiver unit and turn the unit so that the connector points forward in the car.
- b Fit the receiver unit into the recess in the side wall of the floor console.
- c Fit a clip on the floor console's right-hand side wall.
- d Place the wiring harness to the receiver unit in the clip so that the wiring harness is guided directly under the lower edge of the air duct's opening.
- e Secure the unit's antenna at the rear edge of the floor console's rear left-hand corner.

188Other markets except JP:

- a Attach the connector to the central locking system's remote control receiver unit and turn the unit so that the connector points forward in the car.
- b Fit the receiver unit into the recess in the side wall of the floor console.
- c Fit a clip on the floor console's left-hand side wall and a clip on the floor console's right-hand side wall.
- d Locate the wiring harness of the receiver unit in the clips and adjust the position of the clips so that the wiring harness is run just under the lower edge of the air duct orifice.

189Connect the connectors for the seat heating and cigarette lighter, in the rear section of the centre console and then fit the rear section.



190 Fit the glove box, or the ashtray with holder.

191 Select reverse gear (manual) or P-position (automatic) and remove the ignition key.

192 Connect the negative battery cable.

193 Lift in the seat. Fit the 29-pin connector under the seat, hook the rubber straps securely (x 2).

194 Fit new cable ties and secure the cables.

195 Attach any removed seat belt to the seat. Check that the end fitting is correctly fitted by slackening the strap and drawing directly upwards with a force of 5 N. Check that the detent mechanism is visible from the outside of the holder.

196 Fit the rails into the front guides.

197 Fit the front screws and move the seat forward. The bevel gear must be fitted if the seat has been emergency operated.

198 Fit the covers and fit the rear screws.

199 **Manual seat:** Check that the catches on the right and left-hand sides have locked.

200 Torque tighten the rear screws.

Tightening torque 24 Nm (18 lbf ft)

201 Move the seat back.

202 **Manual seat:** Check that the catches on the right and left-hand sides have locked.

203 Torque tighten the front screws.

Tightening torque 24 Nm (18 lbf ft)

204 Set the correct date and time in SID.

205 Enter any radio code.

206 Check with the diagnostic tool that no diagnostic trouble codes have been generated.